

Roundabout 4 Antibody (N-term)
Affinity Purified Rabbit Polyclonal Antibody (Pab)
Catalog # AP5099a**Specification**

Roundabout 4 Antibody (N-term) - Product Information

Application	WB, FC, IHC-P,E
Primary Accession	Q8WZ75
Reactivity	Human
Host	Rabbit
Clonality	Polyclonal
Isotype	Rabbit IgG
Calculated MW	107457
Antigen Region	236-264

Roundabout 4 Antibody (N-term) - Additional Information**Gene ID** 54538**Other Names**

Roundabout homolog 4, Magic roundabout, ROBO4

Target/Specificity

This Roundabout 4 antibody is generated from rabbits immunized with a KLH conjugated synthetic peptide between 236-264 amino acids from the N-terminal region of human Roundabout 4.

Dilution

WB~~1:1000

FC~~1:10~50

IHC-P~~1:50~100

E~~Use at an assay dependent concentration.

Format

Purified polyclonal antibody supplied in PBS with 0.09% (W/V) sodium azide. This antibody is purified through a protein A column, followed by peptide affinity purification.

Storage

Maintain refrigerated at 2-8°C for up to 2 weeks. For long term storage store at -20°C in small aliquots to prevent freeze-thaw cycles.

Precautions

Roundabout 4 Antibody (N-term) is for research use only and not for use in diagnostic or therapeutic procedures.

Roundabout 4 Antibody (N-term) - Protein Information**Name** ROBO4

Function Receptor for Slit proteins, at least for SLIT2, and seems to be involved in angiogenesis and vascular patterning. May mediate the inhibition of primary endothelial cell migration by Slit proteins (By similarity). Involved in the maintenance of endothelial barrier organization and function (PubMed:[30455415](#)).

Tissue Location

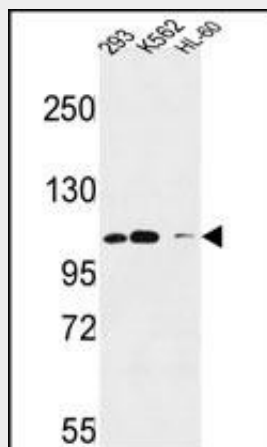
Specifically expressed in endothelial cells. Expressed in endothelial and intimal cells of the ascending aorta (PubMed:30455415).

Roundabout 4 Antibody (N-term) - Protocols

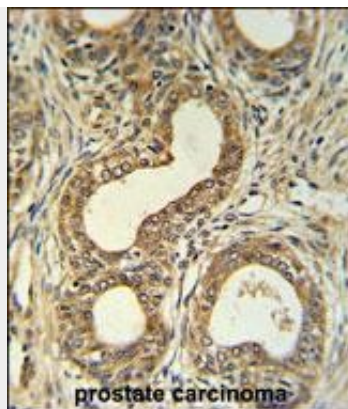
Provided below are standard protocols that you may find useful for product applications.

- [Western Blot](#)
- [Blocking Peptides](#)
- [Dot Blot](#)
- [Immunohistochemistry](#)
- [Immunofluorescence](#)
- [Immunoprecipitation](#)
- [Flow Cytometry](#)
- [Cell Culture](#)

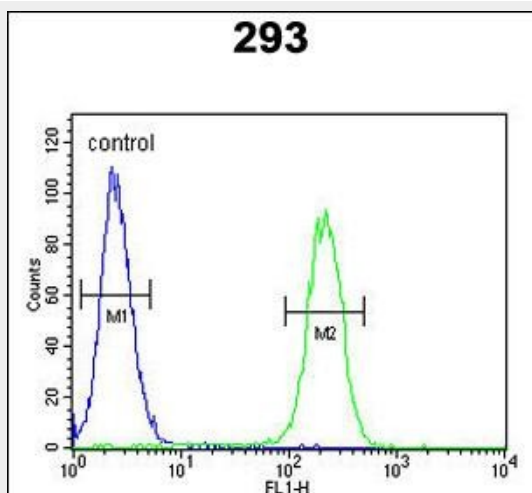
Roundabout 4 Antibody (N-term) - Images



Roundabout 4 Antibody (N-term) (Cat. #AP5099a) western blot analysis in 293,K562,HL-60 cell line lysates (35ug/lane).This demonstrates the Roundabout4 antibody detected the Roundabout4 protein (arrow).



Roundabout 4 Antibody (N-term) (Cat. #AP5099a) IHC analysis in formalin fixed and paraffin embedded prostate carcinoma followed by peroxidase conjugation of the secondary antibody and DAB staining. This data demonstrates the use of the Roundabout 4 Antibody (N-term) for immunohistochemistry. Clinical relevance has not been evaluated.



Roundabout 4 Antibody (N-term) (Cat. #AP5099a) flow cytometric analysis of 293 cells (right histogram) compared to a negative control cell (left histogram). FITC-conjugated goat-anti-rabbit secondary antibodies were used for the analysis.

Roundabout 4 Antibody (N-term) - Background

Roundabout 4 is receptor for Slit proteins, at least for SLIT2, and seems to be involved in angiogenesis and vascular patterning. This protein may mediate the inhibition of primary endothelial cell migration by Slit proteins.

Roundabout 4 Antibody (N-term) - References

Jones, C.A., et al. Nat. Cell Biol. 11(11):1325-1331(2009)
Sheldon, H., et al. FASEB J. 23(2):513-522(2009)
Huang, L., et al. Mol. Vis. 15, 1057-1069 (2009)