

Caspase 2 p18 Antibody
Purified Rabbit Polyclonal Antibody (Pab)
Catalog # AP51040

Specification

Caspase 2 p18 Antibody - Product Information

Application	WB
Primary Accession	P42575
Reactivity	Human, Mouse, Rat
Host	Rabbit
Clonality	Polyclonal
Calculated MW	18 KDa
Antigen Region	131 - 190

Caspase 2 p18 Antibody - Additional Information

Gene ID 835

Other Names

Caspase-2, CASP-2, Neural precursor cell expressed developmentally down-regulated protein 2, NEDD-2, Protease ICH-1, Caspase-2 subunit p18, Caspase-2 subunit p13, Caspase-2 subunit p12, CASP2, ICH1, NEDD2

Target/Specificity

KLH-conjugated synthetic peptide encompassing a sequence within the center region of human Cleaved Caspase 2. The exact sequence is proprietary.

Dilution

WB~~ 1:1000

Format

0.01M PBS, pH 7.2, 0.09% (W/V) Sodium azide, Glycerol 50%

Storage

Store at -20 °C. Stable for 12 months from date of receipt

Caspase 2 p18 Antibody - Protein Information

Name CASP2

Synonyms ICH1, NEDD2

Function

Is a regulator of the cascade of caspases responsible for apoptosis execution (PubMed: [11156409](http://www.uniprot.org/citations/11156409), PubMed: [15073321](http://www.uniprot.org/citations/15073321), PubMed: [8087842](http://www.uniprot.org/citations/8087842)). Might function by either activating some proteins required for cell death or inactivating proteins necessary for cell

survival (PubMed:15073321). Associates with PIDD1 and CRADD to form the PIDDosome, a complex that activates CASP2 and triggers apoptosis in response to genotoxic stress (PubMed:15073321).

Tissue Location

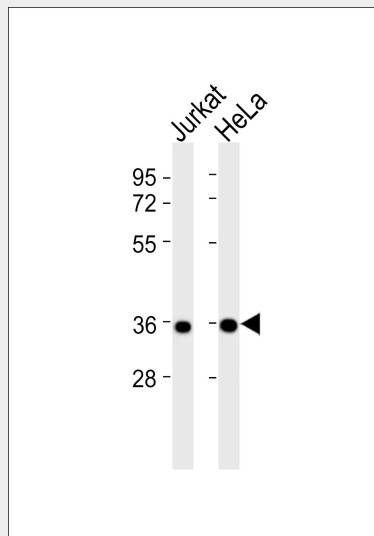
Expressed at higher levels in the embryonic lung, liver and kidney than in the heart and brain. In adults, higher level expression is seen in the placenta, lung, kidney, and pancreas than in the heart, brain, liver and skeletal muscle

Caspase 2 p18 Antibody - Protocols

Provided below are standard protocols that you may find useful for product applications.

- [Western Blot](#)
- [Blocking Peptides](#)
- [Dot Blot](#)
- [Immunohistochemistry](#)
- [Immunofluorescence](#)
- [Immunoprecipitation](#)
- [Flow Cytometry](#)
- [Cell Culture](#)

Caspase 2 p18 Antibody - Images



All lanes : Anti-Caspase 2 p18 Antibody at 1:1000 dilution Lane 1: Jurkat whole cell lysates Lane 2: HeLa whole cell lysates Lysates/proteins at 20 µg per lane. Secondary Goat Anti-Rabbit IgG, (H+L), Peroxidase conjugated at 1/10000 dilution Predicted band size : 51 kDa Blocking/Dilution buffer: 5% NFDM/TBST.

Caspase 2 p18 Antibody - Background

Involved in the activation cascade of caspases responsible for apoptosis execution. Might function by either activating some proteins required for cell death or inactivating proteins necessary for cell survival.

Caspase 2 p18 Antibody - References

Wang L.,et al.Cell 78:739-750(1994).
Droin N.,et al.Cancer Res. 60:7039-7047(2000).
Halleck A.,et al.Submitted (JUN-2004) to the EMBL/GenBank/DDBJ databases.
Ota T.,et al.Nat. Genet. 36:40-45(2004).
Hillier L.W.,et al.Nature 424:157-164(2003).