

Claudin 10 Antibody
Purified Rabbit Polyclonal Antibody (Pab)
Catalog # AP51092**Specification**

Claudin 10 Antibody - Product Information

Application	WB
Primary Accession	P78369
Reactivity	Human, Mouse, Rat
Host	Rabbit
Clonality	Polyclonal
Calculated MW	24, 22 KDa
Antigen Region	161 - 220

Claudin 10 Antibody - Additional Information**Gene ID** 9071**Other Names**

Claudin-10, OSP-like protein, CLDN10

Target/Specificity

KLH conjugated synthetic peptide derived from human Claudin 10

Dilution

WB~~ 1:1000

Format

0.01M PBS, pH 7.2, 0.09% (W/V) Sodium azide, Glycerol 50%

Storage

Store at -20 °C. Stable for 12 months from date of receipt

Claudin 10 Antibody - Protein Information**Name** CLDN10**Function**

Plays a major role in tight junction-specific obliteration of the intercellular space, through calcium-independent cell-adhesion activity. Involved in the regulation of paracellular epithelia permeability to ions in multiple organs. It acts as a paracellular ion channel probably forming permselective pores; isoform 1 appears to create pores preferentially permeable to cations and isoform 2 for anions. In sweat glands and in the thick ascending limb (TAL) of Henle's loop in kidney, it controls paracellular sodium permeability which is essential for proper sweat production and renal function (PubMed:19383724, PubMed:28771254, PubMed:28686597).

Cellular Location

Cell junction, tight junction. Cell membrane; Multi-pass membrane protein

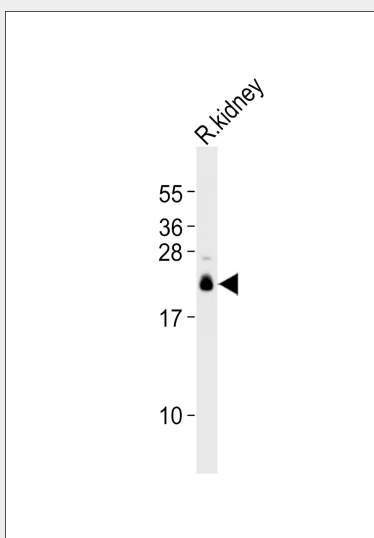
Tissue Location

Expressed in the kidney, eccrine sweat glands and in all layers of the epidermis. In the kidney, it is detected in the thick ascending limb of Henle's loop (TAL) (PubMed:28771254, PubMed:28686597). In the sweat glands, it is expressed in cells from secretory portions, corresponding to the clear cells (PubMed:28686597)

Claudin 10 Antibody - Protocols

Provided below are standard protocols that you may find useful for product applications.

- [Western Blot](#)
- [Blocking Peptides](#)
- [Dot Blot](#)
- [Immunohistochemistry](#)
- [Immunofluorescence](#)
- [Immunoprecipitation](#)
- [Flow Cytometry](#)
- [Cell Culture](#)

Claudin 10 Antibody - Images

Anti-Claudin 10 Antibody at 1:1000 dilution + rat kidney lysates Lysates/proteins at 20 µg per lane. Secondary Goat Anti-Rabbit IgG, (H+L), Peroxidase conjugated at 1/10000 dilution Predicted band size : 24 kDa Blocking/Dilution buffer: 5% NFDM/TBST.

Claudin 10 Antibody - Background

Plays a major role in tight junction-specific obliteration of the intercellular space, through calcium-independent cell-adhesion activity. May form permselective paracellular pores; isoform 1 appears to create pores preferentially permeable to cations and isoform 2 for anions. Plays a key role in controlling cation selectivity and transport in the thick ascending limb (TAL) of Henle's loop in kidney.

Claudin 10 Antibody - References

Gunzel D.,et al.J. Cell Sci. 122:1507-1517(2009).
Keen T.J.,et al.Submitted (JUN-1998) to the EMBL/GenBank/DDBJ databases.
Ota T.,et al.Nat. Genet. 36:40-45(2004).
Ebert L.,et al.Submitted (JUN-2004) to the EMBL/GenBank/DDBJ databases.
Dunham A.,et al.Nature 428:522-528(2004).