

**BTG1 Antibody (Center)**  
**Affinity Purified Rabbit Polyclonal Antibody (Pab)**  
**Catalog # AP5111c****Specification**

---

**BTG1 Antibody (Center) - Product Information**

|                   |   |
|-------------------|---|
| Application       | WB, IHC-P,E   |
| Primary Accession | <a href="#">P62324</a>  |
| Other Accession   | <a href="#">P27049</a> , <a href="#">Q04211</a> , <a href="#">P78543</a> , <a href="#">Q63073</a> , <a href="#">P62325</a> ,<br><a href="#">P34743</a> , <a href="#">P53348</a> |
| Reactivity        | Human, Mouse  |
| Predicted         | Bovine, Chicken, Rat  |
| Host              | Rabbit  |
| Clonality         | Polyclonal  |
| Isotype           | Rabbit IgG  |
| Calculated MW     | 19209   |
| Antigen Region    | 92-118  |

**BTG1 Antibody (Center) - Additional Information****Gene ID** 694**Other Names**

Protein BTG1, B-cell translocation gene 1 protein, BTG1

**Target/Specificity**

This BTG1 antibody is generated from rabbits immunized with a KLH conjugated synthetic peptide between 92-118 amino acids from the Central region of human BTG1.

**Dilution**

WB~~1:2000

IHC-P~~1:50~100

**Format**

Purified polyclonal antibody supplied in PBS with 0.09% (W/V) sodium azide. This antibody is purified through a protein A column, followed by peptide affinity purification.

**Storage**

Maintain refrigerated at 2-8°C for up to 2 weeks. For long term storage store at -20°C in small aliquots to prevent freeze-thaw cycles.

**Precautions**

BTG1 Antibody (Center) is for research use only and not for use in diagnostic or therapeutic procedures.

**BTG1 Antibody (Center) - Protein Information****Name** BTG1

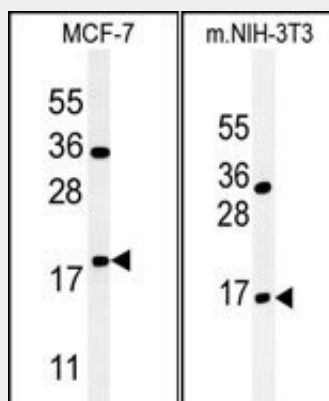
**Function** Anti-proliferative protein.

## BTG1 Antibody (Center) - Protocols

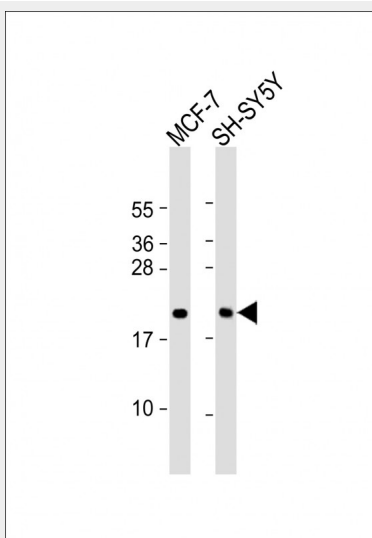
Provided below are standard protocols that you may find useful for product applications.

- [Western Blot](#)
- [Blocking Peptides](#)
- [Dot Blot](#)
- [Immunohistochemistry](#)
- [Immunofluorescence](#)
- [Immunoprecipitation](#)
- [Flow Cytometry](#)
- [Cell Culture](#)

## BTG1 Antibody (Center) - Images

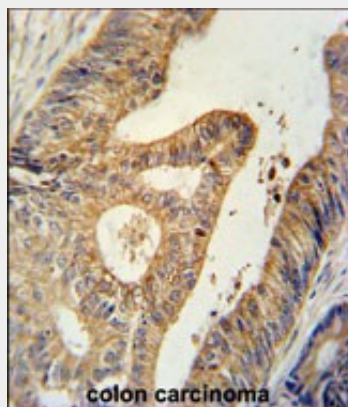


(LEFT)Western blot analysis of BTG1 Antibody (Center) (Cat. #AP5111c) in MCF-7 cell line lysates (35ug/lane).BTG1 (arrow) was detected using the purified Pab.(RIGHT)Western blot analysis of BTG1 Antibody (Center) (Cat. #AP5111c) in mouse NIH-3T3 tissue lysates (35ug/lane).BTG1 (arrow) was detected using the purified Pab.



All lanes : Anti-BTG1 Antibody (Center) at 1:2000 dilution Lane 1: MCF-7 whole cell lysate Lane 2: SH-SY5Y whole cell lysate Lysates/proteins at 20 µg per lane. Secondary Goat Anti-Rabbit IgG,

(H+L), Peroxidase conjugated at 1/10000 dilution. Predicted band size : 19 kDa Blocking/Dilution buffer: 5% NFDM/TBST.



BTG1 Antibody (Center) (Cat. #AP5111c) immunohistochemistry analysis in formalin fixed and paraffin embedded human colon carcinoma followed by peroxidase conjugation of the secondary antibody and DAB staining. This data demonstrates the use of the BTG1 Antibody (Center) for immunohistochemistry. Clinical relevance has not been evaluated.

#### **BTG1 Antibody (Center) - Background**

BTG1 is a member of an anti-proliferative gene family that regulates cell growth and differentiation. Expression of this gene is highest in the G0/G1 phases of the cell cycle and downregulated when cells progressed through G1. The encoded protein interacts with several nuclear receptors, and functions as a coactivator of cell differentiation. This locus has been shown to be involved in a t(8;12)(q24;q22) chromosomal translocation in a case of B-cell chronic lymphocytic leukemia.

#### **BTG1 Antibody (Center) - References**

Camina-Tato, M., et al. J. Neuroimmunol. 213 (1-2), 142-147 (2009) Zemunik, T., et al. Croat. Med. J. 50(1):23-33(2009) Takahashi, N., et al. Exp. Hematol. 36(12):1760-1770(2008)

#### **BTG1 Antibody (Center) - Citations**

- [miR-511 promotes the proliferation of human hepatoma cells by targeting the 3'UTR of B cell translocation gene 1 \(BTG1\) mRNA.](#)