

**CUX1 Antibody**  
**Purified Rabbit Polyclonal Antibody (Pab)**  
**Catalog # AP51134****Specification**

---

**CUX1 Antibody - Product Information**

Application	WB
Primary Accession	<a href="#">P39880</a>
Reactivity	Human, Mouse, Rat
Host	Rabbit
Clonality	Polyclonal
Calculated MW	180, 77 KDa

**CUX1 Antibody - Additional Information****Gene ID** 1523**Other Names**

Homeobox protein cut-like 1, CCAAT displacement protein, CDP, Homeobox protein cux-1, CUX1, CUTL1

**Dilution**

WB~~1:500

**Format**

0.01M PBS, pH 7.2, 0.09% (W/V) Sodium azide, Glycerol 50%

**Storage**

Store at -20 °C.Stable for 12 months from date of receipt

**CUX1 Antibody - Protein Information****Name** CUX1 ([HGNC:2557](#))**Synonyms** CUTL1**Function**

Transcription factor involved in the control of neuronal differentiation in the brain. Regulates dendrite development and branching, and dendritic spine formation in cortical layers II-III. Also involved in the control of synaptogenesis. In addition, it has probably a broad role in mammalian development as a repressor of developmentally regulated gene expression. May act by preventing binding of positively-activating CCAAT factors to promoters. Component of nf-munr repressor; binds to the matrix attachment regions (MARs) (5' and 3') of the immunoglobulin heavy chain enhancer. Represses T-cell receptor (TCR) beta enhancer function by binding to MARbeta, an ATC- rich DNA sequence located upstream of the TCR beta enhancer. Binds to the TH enhancer; may require the basic helix-loop-helix protein TCF4 as a coactivator.

**Cellular Location**

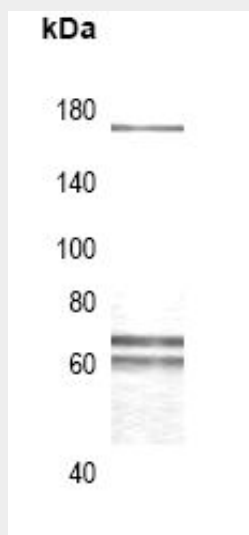
Nucleus.

### CUX1 Antibody - Protocols

Provided below are standard protocols that you may find useful for product applications.

- [Western Blot](#)
- [Blocking Peptides](#)
- [Dot Blot](#)
- [Immunohistochemistry](#)
- [Immunofluorescence](#)
- [Immunoprecipitation](#)
- [Flow Cytometry](#)
- [Cell Culture](#)

### CUX1 Antibody - Images



HEK293T

### CUX1 Antibody - Background

Probably has a broad role in mammalian development as a repressor of developmentally regulated gene expression. May act by preventing binding of positively-activating CCAAT factors to promoters. Component of nf-munr repressor; binds to the matrix attachment regions (MARs) (5' and 3') of the immunoglobulin heavy chain enhancer. Represses T-cell receptor (TCR) beta enhancer function by binding to MARbeta, an ATC-rich DNA sequence located upstream of the TCR beta enhancer (By similarity).

### CUX1 Antibody - References

Neufeld E.J., et al. Nat. Genet. 1:50-55(1992).  
Ota T., et al. Nat. Genet. 36:40-45(2004).  
Hillier L.W., et al. Nature 424:157-164(2003).  
Gloeckner G., et al. Genome Res. 8:1060-1073(1998).  
Rong Zeng W., et al. Gene 241:75-85(2000).