

ADFP Antibody (Center)
Affinity Purified Rabbit Polyclonal Antibody (Pab)
Catalog # AP5118c**Specification**

ADFP Antibody (Center) - Product Information

Application	WB, IHC-P, FC,E
Primary Accession	Q99541
Reactivity	Human
Host	Rabbit
Clonality	Polyclonal
Isotype	Rabbit IgG
Antigen Region	186-214

ADFP Antibody (Center) - Additional Information**Gene ID** 123**Other Names**

Perilipin-2, Adipophilin, Adipose differentiation-related protein, ADRP, PLIN2, ADFP

Target/Specificity

This ADFP antibody is generated from rabbits immunized with a KLH conjugated synthetic peptide between 186-214 amino acids from the Central region of human ADFP.

Dilution

WB~~1:2000

IHC-P~~1:600

FC~~1:10~50

E~~Use at an assay dependent concentration.

Format

Purified polyclonal antibody supplied in PBS with 0.09% (W/V) sodium azide. This antibody is purified through a protein A column, followed by peptide affinity purification.

Storage

Maintain refrigerated at 2-8°C for up to 2 weeks. For long term storage store at -20°C in small aliquots to prevent freeze-thaw cycles.

Precautions

ADFP Antibody (Center) is for research use only and not for use in diagnostic or therapeutic procedures.

ADFP Antibody (Center) - Protein Information**Name** PLIN2 ([HGNC:248](#))**Synonyms** ADFP

Function Structural component of lipid droplets, which is required for the formation and maintenance of lipid storage droplets.

Cellular Location

Membrane {ECO:0000250|UniProtKB:P43883}; Peripheral membrane protein {ECO:0000250|UniProtKB:P43883}. Lipid droplet

Tissue Location

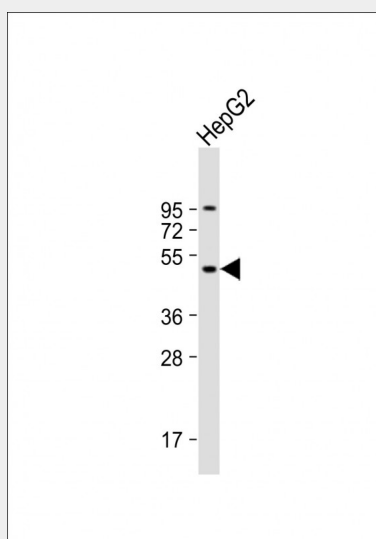
Milk lipid globules..

ADFP Antibody (Center) - Protocols

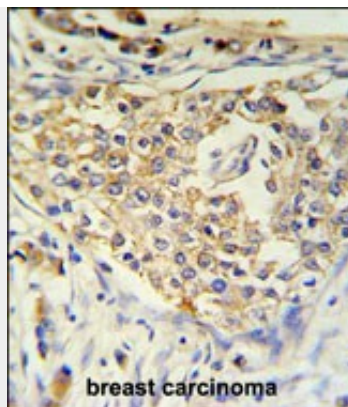
Provided below are standard protocols that you may find useful for product applications.

- [Western Blot](#)
- [Blocking Peptides](#)
- [Dot Blot](#)
- [Immunohistochemistry](#)
- [Immunofluorescence](#)
- [Immunoprecipitation](#)
- [Flow Cytometry](#)
- [Cell Culture](#)

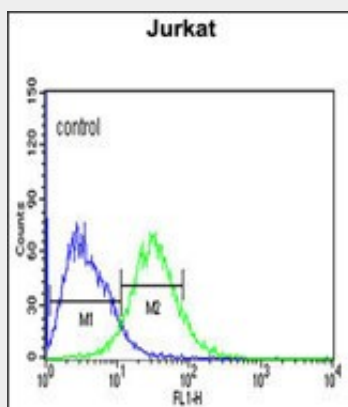
ADFP Antibody (Center) - Images



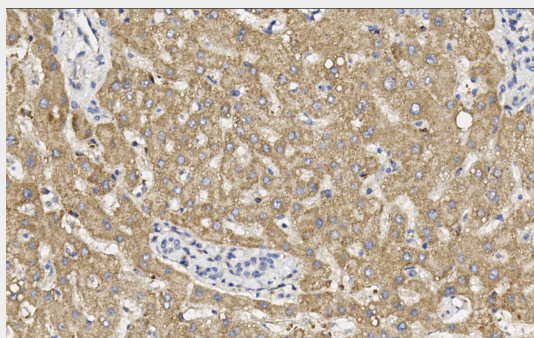
Anti-ADFP Antibody (Center) at 1:2000 dilution + HepG2 whole cell lysate Lysates/proteins at 20 µg per lane. Secondary Goat Anti-Rabbit IgG, (H+L), Peroxidase conjugated at 1/10000 dilution. Predicted band size : 48 kDa Blocking/Dilution buffer: 5% NFDM/TBST.



ADFP Antibody (Center) (Cat. #AP5118c) IHC analysis in formalin fixed and paraffin embedded breast carcinoma followed by peroxidase conjugation of the secondary antibody and DAB staining. This data demonstrates the use of the ADFP Antibody (Center) for immunohistochemistry. Clinical relevance has not been evaluated.



ADFP Antibody (Center) (Cat. #AP5118c) flow cytometric analysis of Jurkat cells (right histogram) compared to a negative control cell (left histogram). FITC-conjugated goat-anti-rabbit secondary antibodies were used for the analysis.



ADFP Antibody (Center) (Cat. #AP5118c) IHC analysis in formalin fixed and paraffin embedded human liver followed by peroxidase conjugation of the secondary antibody and DAB staining. This data demonstrates the use of the ADFP Antibody (Center) for immunohistochemistry.

ADFP Antibody (Center) - Background

Adipocyte differentiation-related protein is associated with the globule surface membrane material. This protein is a major constituent of the globule surface. Increase in mRNA levels is one of the earliest indications of adipocyte differentiation.

ADFP Antibody (Center) - References

Kimmel, A.R., et al. J. Lipid Res. 51(3):468-471(2010)

Kotokorpi, P., et al. Mol. Pharmacol. 77(1):79-86(2010)

Minnaard, R., et al. J. Clin. Endocrinol. Metab. 94(10):4077-4085(2009)

ADFP Antibody (Center) - Citations

- [A fluorogenic complementation tool kit for interrogating lipid droplet-organelle interaction](#)
- [Optimized protocol for the identification of lipid droplet proteomes using proximity labeling proteomics in cultured human cells](#)
- [Identification of Lipid Droplet Proteomes by Proximity Labeling Proteomics Using APEX2.](#)
- [Lipid droplet formation in Mycobacterium tuberculosis infected macrophages requires IFN- \$\gamma\$ /HIF-1 \$\alpha\$ signaling and supports host defense.](#)