

ZFYVE16 Antibody (N-term)
Affinity Purified Rabbit Polyclonal Antibody (Pab)
Catalog # AP5120a**Specification**

ZFYVE16 Antibody (N-term) - Product Information

Application	WB, IHC-P, FC,E
Primary Accession	Q7Z3T8
Reactivity	Human
Host	Rabbit
Clonality	Polyclonal
Isotype	Rabbit IgG
Calculated MW	168903
Antigen Region	375-404

ZFYVE16 Antibody (N-term) - Additional Information**Gene ID** 9765**Other Names**

Zinc finger FYVE domain-containing protein 16, Endofin, Endosome-associated FYVE domain protein, ZFYVE16, KIAA0305

Target/Specificity

This ZFYVE16 antibody is generated from rabbits immunized with a KLH conjugated synthetic peptide between 375-404 amino acids from the N-terminal region of human ZFYVE16.

DilutionWB~~1:1000
IHC-P~~1:10~50
FC~~1:10~50**Format**

Purified polyclonal antibody supplied in PBS with 0.09% (W/V) sodium azide. This antibody is purified through a protein A column, followed by peptide affinity purification.

Storage

Maintain refrigerated at 2-8°C for up to 2 weeks. For long term storage store at -20°C in small aliquots to prevent freeze-thaw cycles.

Precautions

ZFYVE16 Antibody (N-term) is for research use only and not for use in diagnostic or therapeutic procedures.

ZFYVE16 Antibody (N-term) - Protein Information**Name** ZFYVE16

Synonyms KIAA0305

Function May be involved in regulating membrane trafficking in the endosomal pathway. Overexpression induces endosome aggregation. Required to target TOM1 to endosomes.

Cellular Location

Cytoplasm. Early endosome membrane; Peripheral membrane protein. Note=Localized to early endosomes. Membrane-associated, probably via its association with phosphatidylinositol 3-phosphate (PI3P)

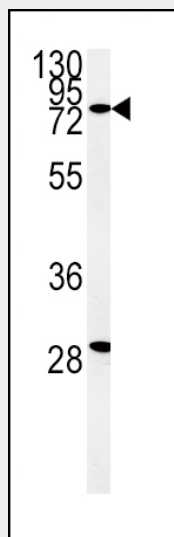
Tissue Location

Widely expressed. Highly expressed in kidney, placenta and lung. Expressed at intermediate level in heart, brain, skeletal muscle, spleen and liver. Weakly expressed in colon, thymus and peripheral blood lymphocytes.

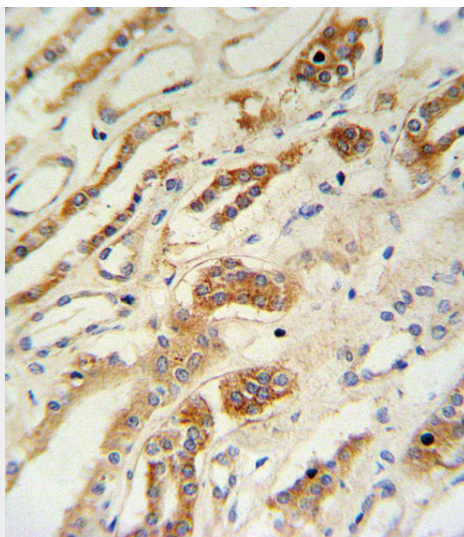
ZFYVE16 Antibody (N-term) - Protocols

Provided below are standard protocols that you may find useful for product applications.

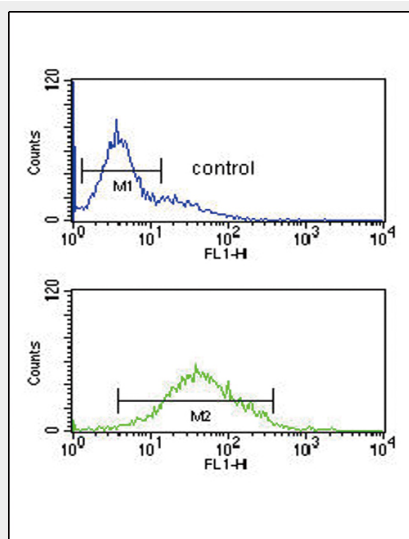
- [Western Blot](#)
- [Blocking Peptides](#)
- [Dot Blot](#)
- [Immunohistochemistry](#)
- [Immunofluorescence](#)
- [Immunoprecipitation](#)
- [Flow Cytometry](#)
- [Cell Culture](#)

ZFYVE16 Antibody (N-term) - Images

Western blot analysis of ZFYVE16 Antibody (N-term) (Cat. #AP5120a) in K562 cell line lysates (35ug/lane). ZFYVE16 (arrow) was detected using the purified Pab.



ZFYVE16 Antibody (N-term) (Cat. #AP5120a) IHC analysis in formalin fixed and paraffin embedded lung tissue followed by peroxidase conjugation of the secondary antibody and DAB staining. This data demonstrates the use of the ZFYVE16 Antibody (N-term) for immunohistochemistry. Clinical relevance has not been evaluated.



ZFYVE16 Antibody (N-term) (Cat. #AP5120a) flow cytometric analysis of K562 cells (bottom histogram) compared to a negative control cell (top histogram). FITC-conjugated goat-anti-rabbit secondary antibodies were used for the analysis.

ZFYVE16 Antibody (N-term) - Background

The ZFYVE16 gene encodes endofin, an endosomal protein implicated in regulating membrane trafficking. It is characterized by the presence of a phosphatidylinositol 3-phosphate-binding FYVE domain positioned in the middle of the molecule.

ZFYVE16 Antibody (N-term) - References

Toy, W., et al. Cell. Signal. 22(3):437-446(2010) Chen, Y., et al. Proteomics 7(14):2384-2397(2007) Shi, W., et al. J. Cell. Sci. 120 (PT 7), 1216-1224 (2007)