

FXR2 Antibody
Purified Rabbit Polyclonal Antibody (Pab)
Catalog # AP51218**Specification**

FXR2 Antibody - Product Information

Application	WB
Primary Accession	P51116
Reactivity	Human, Mouse
Host	Rabbit
Clonality	Polyclonal
Calculated MW	90 KDa
Antigen Region	551 - 610

FXR2 Antibody - Additional Information**Gene ID** 9513**Other Names**

Fragile X mental retardation syndrome-related protein 2, FXR2, FMR1L2

Target/Specificity

KLH conjugated synthetic peptide derived from human FXR2

Dilution

WB~~ 1:1000

Format

0.01M PBS, pH 7.2, 0.09% (W/V) Sodium azide, Glycerol 50%

Storage

Store at -20 °C. Stable for 12 months from date of receipt

FXR2 Antibody - Protein Information**Name** FXR2 {ECO:0000303|PubMed:7489725, ECO:0000312|HGNC:HGNC:4024}**Function**

mRNA-binding protein that acts as a regulator of mRNAs translation and/or stability, and which is required for adult hippocampal neurogenesis (By similarity). Specifically binds to AU-rich elements (AREs) in the 3'-UTR of target mRNAs (By similarity). Promotes formation of some phase-separated membraneless compartment by undergoing liquid-liquid phase separation upon binding to AREs-containing mRNAs: mRNAs storage into membraneless compartments regulates their translation and/or stability (By similarity). Acts as a regulator of adult hippocampal neurogenesis by regulating translation and/or stability of NOG mRNA, thereby preventing NOG protein expression in the dentate gyrus (By similarity).

Cellular Location

Cytoplasm, Cytoplasmic ribonucleoprotein granule {ECO:0000250|UniProtKB:Q61584}. Cytoplasm Postsynapse {ECO:0000250|UniProtKB:Q9WVR4}. Note=Specifically localizes to cytoplasmic ribonucleoprotein membraneless compartments (By similarity). Localization to the post-synaptic region is dependent on FMR1 (By similarity). {ECO:0000250|UniProtKB:Q61584, ECO:0000250|UniProtKB:Q9WVR4}

Tissue Location

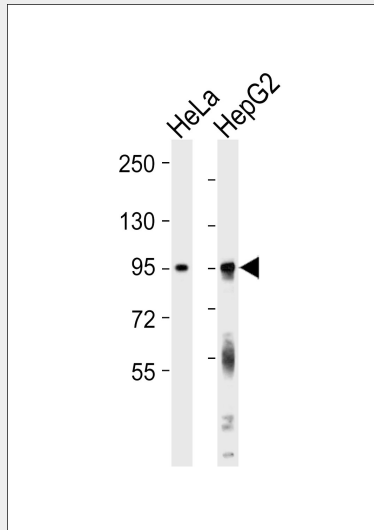
Expressed in all tissues examined including heart, brain, kidney and testis (PubMed:9259278). In brain, present at high level in neurons and especially in the Purkinje cells at the interface between the granular layer and the molecular layer (at protein level) (PubMed:9259278).

FXR2 Antibody - Protocols

Provided below are standard protocols that you may find useful for product applications.

- [Western Blot](#)
- [Blocking Peptides](#)
- [Dot Blot](#)
- [Immunohistochemistry](#)
- [Immunofluorescence](#)
- [Immunoprecipitation](#)
- [Flow Cytometry](#)
- [Cell Culture](#)

FXR2 Antibody - Images



All lanes : Anti-FXR2 Antibody at 1:1000 dilution Lane 1: HeLa whole cell lysates Lane 2: HepG2 whole cell lysates Lysates/proteins at 20 µg per lane. Secondary Goat Anti-Rabbit IgG, (H+L), Peroxidase conjugated at 1/10000 dilution Predicted band size : 75 kDa Blocking/Dilution buffer: 5% NFDM/TBST.

FXR2 Antibody - Background

RNA-binding protein.

FXR2 Antibody - References

Zhang Y.,et al.EMBO J. 14:5358-5366(1995).
Kalnine N.,et al.Submitted (AUG-2003) to the EMBL/GenBank/DDBJ databases.
Ota T.,et al.Nat. Genet. 36:40-45(2004).
Mural R.J.,et al.Submitted (SEP-2005) to the EMBL/GenBank/DDBJ databases.
Joseph D.R.,et al.Steroids 63:2-4(1998).