

**GRK6 Antibody**  
**Purified Rabbit Polyclonal Antibody (Pab)**  
**Catalog # AP51246****Specification**

---

**GRK6 Antibody - Product Information**

Application	WB
Primary Accession	<a href="#">P43250</a>
Reactivity	Human, Mouse, Rat
Host	Rabbit
Clonality	Polyclonal
Calculated MW	66 KDa
Antigen Region	21 - 80

**GRK6 Antibody - Additional Information****Gene ID** 2870**Other Names**

G protein-coupled receptor kinase 6, G protein-coupled receptor kinase GRK6, GRK6, GPRK6

**Target/Specificity**

KLH conjugated synthetic peptide derived from human GRK6

**Dilution**

WB~~ 1:1000

**Format**

0.01M PBS, pH 7.2, 0.09% (W/V) Sodium azide, Glycerol 50%

**Storage**

Store at -20 °C. Stable for 12 months from date of receipt

**GRK6 Antibody - Protein Information****Name** GRK6**Synonyms** GPRK6**Function**

Specifically phosphorylates the activated forms of G protein- coupled receptors. Such receptor phosphorylation initiates beta- arrestin-mediated receptor desensitization, internalization, and signaling events leading to their desensitization. Seems to be involved in the desensitization of D2-like dopamine receptors in striatum and chemokine receptor CXCR4 which is critical for CXCL12-induced cell chemotaxis (By similarity). Phosphorylates rhodopsin (RHO) (in vitro) and a non G-protein-coupled receptor: LRP6 during Wnt signaling (in vitro).

**Cellular Location**

Membrane; Lipid-anchor.

#### Tissue Location

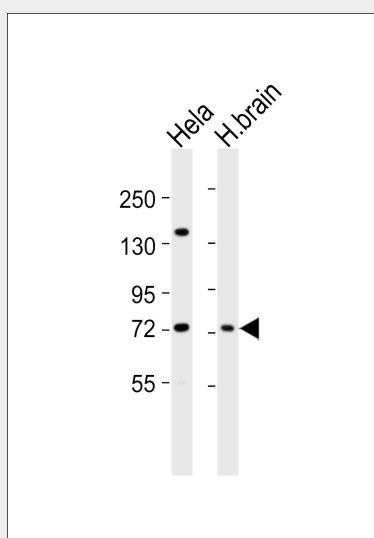
Widely expressed..

### GRK6 Antibody - Protocols

Provided below are standard protocols that you may find useful for product applications.

- [Western Blot](#)
- [Blocking Peptides](#)
- [Dot Blot](#)
- [Immunohistochemistry](#)
- [Immunofluorescence](#)
- [Immunoprecipitation](#)
- [Flow Cytometry](#)
- [Cell Culture](#)

### GRK6 Antibody - Images



All lanes : Anti-GRK6 Antibody at 1:1000 dilution Lane 1: HeLa whole cell lysates Lane 2: human brain lysates Lysates/proteins at 20 µg per lane. Secondary Goat Anti-Rabbit IgG, (H+L), Peroxidase conjugated at 1/10000 dilution Predicted band size : 66 kDa Blocking/Dilution buffer: 5% NFDM/TBST.

### GRK6 Antibody - Background

Specifically phosphorylates the activated forms of G protein-coupled receptors. Such receptor phosphorylation initiates beta-arrestin-mediated receptor desensitization, internalization, and signaling events leading to their desensitization. Seems to be involved in the desensitization of D2-like dopamine receptors in striatum and chemokine receptor CXCR4 which is critical for CXCL12-induced cell chemotaxis (By similarity). Phosphorylates rhodopsin (RHO) (in vitro) and a non G-protein-coupled receptor: LRP6 during Wnt signaling (in vitro).

### GRK6 Antibody - References

Benovic J.L., et al. J. Biol. Chem. 268:19521-19527(1993).

Premont R.T.,et al.J. Biol. Chem. 274:29381-29389(1999).  
Schmutz J.,et al.Nature 431:268-274(2004).  
Haribabu B.,et al.Proc. Natl. Acad. Sci. U.S.A. 90:9398-9402(1993).  
Stoffel R.H.,et al.J. Biol. Chem. 269:27791-27794(1994).