

**HEL308 Antibody (Center)**  
**Affinity Purified Rabbit Polyclonal Antibody (Pab)**  
**Catalog # AP5124c****Specification**

---

**HEL308 Antibody (Center) - Product Information**

Application	WB, IHC-P, FC,E
Primary Accession	<a href="#">Q8TDG4</a>
Reactivity	Human, Mouse
Host	Rabbit
Clonality	Polyclonal
Isotype	Rabbit IgG
Calculated MW	124131
Antigen Region	399-428

**HEL308 Antibody (Center) - Additional Information****Gene ID** 113510**Other Names**

Helicase POLQ-like, Mus308-like helicase, POLQ-like helicase, HELQ, HEL308

**Target/Specificity**

This HEL308 antibody is generated from rabbits immunized with a KLH conjugated synthetic peptide between 399-428 amino acids from the Central region of human HEL308.

**Dilution**

WB~~1:1000  
IHC-P~~1:50~100  
FC~~1:10~50

**Format**

Purified polyclonal antibody supplied in PBS with 0.09% (W/V) sodium azide. This antibody is purified through a protein A column, followed by peptide affinity purification.

**Storage**

Maintain refrigerated at 2-8°C for up to 2 weeks. For long term storage store at -20°C in small aliquots to prevent freeze-thaw cycles.

**Precautions**

HEL308 Antibody (Center) is for research use only and not for use in diagnostic or therapeutic procedures.

**HEL308 Antibody (Center) - Protein Information****Name** HELQ {ECO:0000303|PubMed:24005041, ECO:0000312|HGNC:HGNC:18536}**Function** Single-stranded 3'-5' DNA helicase that plays a key role in homology-driven

double-strand break (DSB) repair (PubMed:[11751861](#), PubMed:[19995904](#), PubMed:[21398521](#), PubMed:[24005041](#), PubMed:[24005565](#), PubMed:[34316696](#), PubMed:[34937945](#)). Involved in different DSB repair mechanisms that are guided by annealing of extensive stretches of complementary bases at break ends, such as microhomology-mediated end-joining (MMEJ), single-strand annealing (SSA) or synthesis-dependent strand annealing (SDSA) (PubMed:[34937945](#)). Possesses both DNA unwinding and annealing activities (PubMed:[34937945](#)). Forms a complex with RAD51, stimulating HELQ DNA helicase activity and ability to unwind DNA (PubMed:[34937945](#)). Efficiently unwinds substrates containing 3' overhangs or a D-loop (PubMed:[21398521](#), PubMed:[34937945](#)). In contrast, interaction with the replication protein A (RPA/RP-A) complex inhibits DNA unwinding by HELQ but strongly stimulates DNA strand annealing (PubMed:[34937945](#)). Triggers displacement of RPA from single-stranded DNA to facilitate annealing of complementary sequences (PubMed:[34316696](#), PubMed:[34937945](#)).

#### Cellular Location

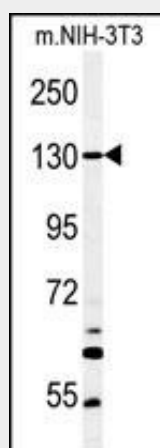
Nucleus. Chromosome Note=Localizes to sites of DNA damage; localizes to damaged replication forks.

#### HEL308 Antibody (Center) - Protocols

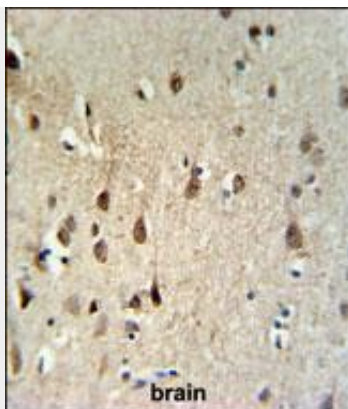
Provided below are standard protocols that you may find useful for product applications.

- [Western Blot](#)
- [Blocking Peptides](#)
- [Dot Blot](#)
- [Immunohistochemistry](#)
- [Immunofluorescence](#)
- [Immunoprecipitation](#)
- [Flow Cytometry](#)
- [Cell Culture](#)

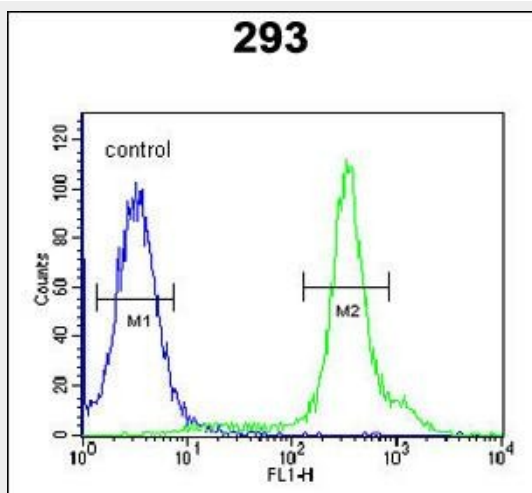
#### HEL308 Antibody (Center) - Images



Western blot analysis of HEL308 Antibody (Center) (Cat. #AP5124c) in mouse NIH-3T3 tissue lysates (35ug/lane). HEL308 (arrow) was detected using the purified Pab.



HEL308 Antibody (Center) (Cat. #AP5124c) IHC analysis in formalin fixed and paraffin embedded human brain tissue followed by peroxidase conjugation of the secondary antibody and DAB staining. This data demonstrates the use of the HEL308 Antibody (Center) for immunohistochemistry. Clinical relevance has not been evaluated.



HEL308 Antibody (Center) (Cat. #AP5124c) flow cytometric analysis of 293 cells (right histogram) compared to a negative control cell (left histogram). FITC-conjugated goat-anti-rabbit secondary antibodies were used for the analysis.

#### **HEL308 Antibody (Center) - Background**

HEL308 is a single-stranded DNA-dependent ATPase and DNA helicase.

#### **HEL308 Antibody (Center) - References**

Bethke, L., et al. J. Natl. Cancer Inst. 100(4):270-276(2008)  
Marini, F., et al. J. Biol. Chem. 278(34):32014-32019(2003)

#### **HEL308 Antibody (Center) - Citations**

- [Helicase POLO-like \(HELO\) as a novel indicator of platinum-based chemoresistance for epithelial ovarian cancer.](#)