

TESC Antibody (C-term)
Affinity Purified Rabbit Polyclonal Antibody (Pab)
Catalog # AP5136b

Specification

TESC Antibody (C-term) - Product Information

Application	FC, IHC-P, WB,E
Primary Accession	Q96BS2
Reactivity	Human, Mouse
Host	Rabbit
Clonality	Polyclonal
Isotype	Rabbit IgG
Antigen Region	88-116

TESC Antibody (C-term) - Additional Information

Gene ID 54997

Other Names

Calcineurin B homologous protein 3, Tescalcin, TSC, TESC, CHP3

Target/Specificity

This TESC antibody is generated from rabbits immunized with a KLH conjugated synthetic peptide between 88-116 amino acids from the C-terminal region of human TESC.

Dilution

FC~~1:10~50

IHC-P~~1:50~100

WB~~1:1000

E~~Use at an assay dependent concentration.

Format

Purified polyclonal antibody supplied in PBS with 0.09% (W/V) sodium azide. This antibody is purified through a protein A column, followed by peptide affinity purification.

Storage

Maintain refrigerated at 2-8°C for up to 2 weeks. For long term storage store at -20°C in small aliquots to prevent freeze-thaw cycles.

Precautions

TESC Antibody (C-term) is for research use only and not for use in diagnostic or therapeutic procedures.

TESC Antibody (C-term) - Protein Information

Name TESC

Synonyms CHP3

Function Functions as an integral cofactor in cell pH regulation by controlling plasma membrane-type Na(+)/H(+) exchange activity. Promotes the maturation, transport, cell surface stability and exchange activity of SLC9A1/NHE1 at the plasma membrane. Promotes the induction of hematopoietic stem cell differentiation toward megakaryocytic lineage. Essential for the coupling of ERK cascade activation with the expression of ETS family genes in megakaryocytic differentiation. Also involved in granulocytic differentiation in a ERK-dependent manner. Inhibits the phosphatase activity of calcineurin.

Cellular Location

Nucleus. Cytoplasm. Membrane; Lipid-anchor. Cell membrane. Cell projection, lamellipodium. Cell projection, ruffle membrane {ECO:0000250|UniProtKB:Q9JKL5} Note=Colocalizes with SLC9A1 at the plasma membrane

Tissue Location

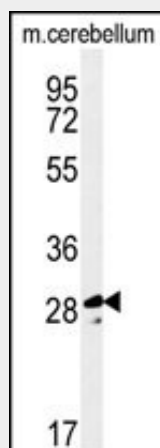
Expressed in mature megakaryocytes and polymorphonuclear granulocytes (at protein level). Abundantly expressed in heart. Also expressed at a lower level in adult testis and salivary gland, and in the placenta.

TESC Antibody (C-term) - Protocols

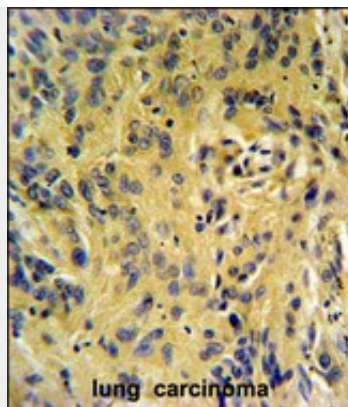
Provided below are standard protocols that you may find useful for product applications.

- [Western Blot](#)
- [Blocking Peptides](#)
- [Dot Blot](#)
- [Immunohistochemistry](#)
- [Immunofluorescence](#)
- [Immunoprecipitation](#)
- [Flow Cytometry](#)
- [Cell Culture](#)

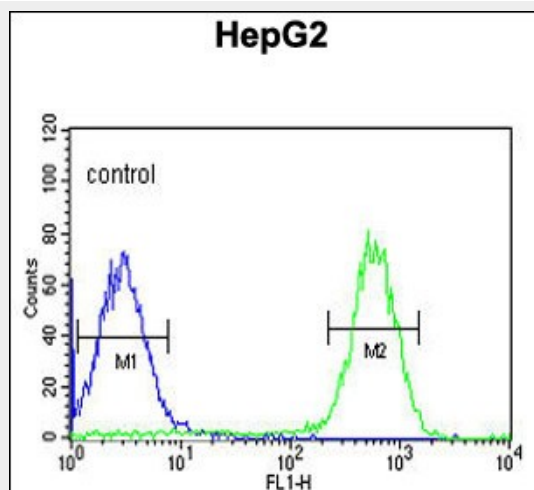
TESC Antibody (C-term) - Images



Western blot analysis of TESC Antibody (C-term) (Cat. #AP5136b) in mouse cerebellum tissue lysates (35ug/lane).TESC (arrow) was detected using the purified Pab.



TESC Antibody (C-term) (Cat. #AP5136b) IHC analysis in formalin fixed and paraffin embedded human lung carcinoma followed by peroxidase conjugation of the secondary antibody and DAB staining. This data demonstrates the use of the TESC Antibody (C-term) for immunohistochemistry. Clinical relevance has not been evaluated.



TESC Antibody (C-term) (Cat. #AP5136b) flow cytometric analysis of HepG2 cells (right histogram) compared to a negative control cell (left histogram). FITC-conjugated goat-anti-rabbit secondary antibodies were used for the analysis.

TESC Antibody (C-term) - Background

Essential for the coupling of ERK cascade activation with the expression of ETS family genes in megakaryocytic differentiation.

TESC Antibody (C-term) - References

- Bao, Y., et al. Gene Expr. Patterns 9(5):273-281(2009)
- Zaun, H.C., et al. J. Biol. Chem. 283(18):12456-12467(2008)
- Levy, K., et al. J. Clin. Invest. 117(9):2672-2683(2007)