

FKBPL Antibody (C-term)
Affinity Purified Rabbit Polyclonal Antibody (Pab)
Catalog # AP5138b**Specification**

FKBPL Antibody (C-term) - Product Information

| | |
|-------------------|---|
| Application | FC, IHC-P, WB,E |
| Primary Accession | Q9UIM3 |
| Other Accession | Q6MG81 , Q35450 |
| Reactivity | Human |
| Predicted | Mouse, Rat |
| Host | Rabbit |
| Clonality | Polyclonal |
| Isotype | Rabbit IgG |
| Calculated MW | 38176 |
| Antigen Region | 264-292 |

FKBPL Antibody (C-term) - Additional Information**Gene ID** 63943**Other Names**

FK506-binding protein-like, WAF-1/CIP1 stabilizing protein 39, WISp39, FKBPL, DIR1, NG7

Target/Specificity

This FKBPL antibody is generated from rabbits immunized with a KLH conjugated synthetic peptide between 264-292 amino acids from the C-terminal region of human FKBPL.

Dilution

FC~~1:10~50

IHC-P~~1:50~100

WB~~1:1000

E~~Use at an assay dependent concentration.

Format

Purified polyclonal antibody supplied in PBS with 0.09% (W/V) sodium azide. This antibody is purified through a protein A column, followed by peptide affinity purification.

Storage

Maintain refrigerated at 2-8°C for up to 2 weeks. For long term storage store at -20°C in small aliquots to prevent freeze-thaw cycles.

Precautions

FKBPL Antibody (C-term) is for research use only and not for use in diagnostic or therapeutic procedures.

FKBPL Antibody (C-term) - Protein Information

Name FKBPL

Synonyms DIR1, NG7

Function May be involved in response to X-ray. Regulates p21 protein stability by binding to Hsp90 and p21.

Tissue Location

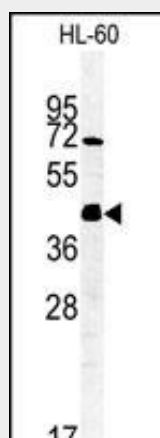
Ubiquitously expressed with higher levels in testis.

FKBPL Antibody (C-term) - Protocols

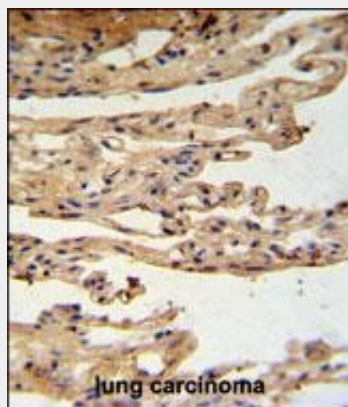
Provided below are standard protocols that you may find useful for product applications.

- [Western Blot](#)
- [Blocking Peptides](#)
- [Dot Blot](#)
- [Immunohistochemistry](#)
- [Immunofluorescence](#)
- [Immunoprecipitation](#)
- [Flow Cytometry](#)
- [Cell Culture](#)

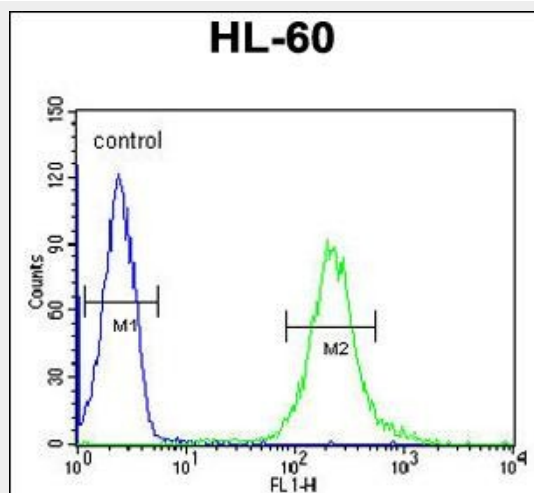
FKBPL Antibody (C-term) - Images



Western blot analysis of FKBPL Antibody (C-term) (Cat. #AP5138b) in HL-60 cell line lysates (35ug/lane).FKBPL (arrow) was detected using the purified Pab.



FKBPL Antibody (C-term) (Cat. #AP5138b) IHC analysis in formalin fixed and paraffin embedded lung carcinoma followed by peroxidase conjugation of the secondary antibody and DAB staining. This data demonstrates the use of the FKBPL Antibody (C-term) for immunohistochemistry. Clinical relevance has not been evaluated.



FKBPL Antibody (C-term) (Cat. #AP5138b) flow cytometric analysis of HL-60 cells (right histogram) compared to a negative control cell (left histogram). FITC-conjugated goat-anti-rabbit secondary antibodies were used for the analysis.

FKBPL Antibody (C-term) - Background

FKBPL has similarity to the immunophilin protein family, which play a role in immunoregulation and basic cellular processes involving protein folding and trafficking. The encoded protein is thought to have a potential role in the induced radioresistance. Also it appears to have some involvement in the control of the cell cycle.

FKBPL Antibody (C-term) - References

McKeen, H.D., et al. Cancer Res. 70(3):1090-1100(2010)
Sunnotel, O., et al. Reprod. Biol. Endocrinol. 8, 22 (2010)
Barcellos, L.F., et al. PLoS Genet. 5 (10), E1000696 (2009)