

Patched Antibody
Purified Rabbit Polyclonal Antibody (Pab)
Catalog # AP51457

Specification

Patched Antibody - Product Information

Application	WB
Primary Accession	Q13635
Reactivity	Human, Mouse, Rat
Host	Rabbit
Clonality	Polyclonal
Calculated MW	160 KDa
Antigen Region	11 - 70

Patched Antibody - Additional Information

Gene ID 5727

Other Names

Protein patched homolog 1, PTC, PTC1, PTCH1, PTCH

Target/Specificity

KLH-conjugated synthetic peptide encompassing a sequence within the N-term region of human Patched. The exact sequence is proprietary.

Dilution

WB~~ 1:1000

Format

0.01M PBS, pH 7.2, 0.09% (W/V) Sodium azide, Glycerol 50%

Storage

Store at -20 °C. Stable for 12 months from date of receipt

Patched Antibody - Protein Information

Name PTCH1

Synonyms PTCH

Function

Acts as a receptor for sonic hedgehog (SHH), indian hedgehog (IHH) and desert hedgehog (DHH). Associates with the smoothened protein (SMO) to transduce the hedgehog's proteins signal. Seems to have a tumor suppressor function, as inactivation of this protein is probably a necessary, if not sufficient step for tumorigenesis.

Cellular Location

Cell membrane {ECO:0000250|UniProtKB:Q61115}; Multi-pass membrane protein

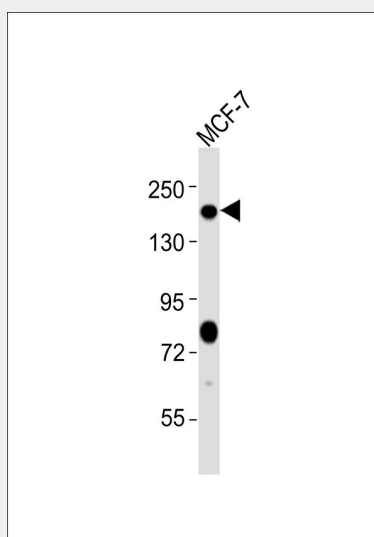
Tissue Location

In the adult, expressed in brain, lung, liver, heart, placenta, skeletal muscle, pancreas and kidney.
Expressed in tumor cells but not in normal skin

Patched Antibody - Protocols

Provided below are standard protocols that you may find useful for product applications.

- [Western Blot](#)
- [Blocking Peptides](#)
- [Dot Blot](#)
- [Immunohistochemistry](#)
- [Immunofluorescence](#)
- [Immunoprecipitation](#)
- [Flow Cytometry](#)
- [Cell Culture](#)

Patched Antibody - Images

Anti-Patched Antibody at 1:1000 dilution + MCF-7 whole cell lysates. Lysates/proteins at 20 µg per lane. Secondary Goat Anti-Rabbit IgG, (H+L), Peroxidase conjugated at 1/10000 dilution. Predicted band size : 161 kDa. Blocking/Dilution buffer: 5% NFDM/TBST.

Patched Antibody - Background

Acts as a receptor for sonic hedgehog (SHH), indian hedgehog (IHH) and desert hedgehog (DHH). Associates with the smoothened protein (SMO) to transduce the hedgehog's proteins signal. Seems to have a tumor suppressor function, as inactivation of this protein is probably a necessary, if not sufficient step for tumorigenesis.

Patched Antibody - References

Johnson R.L., et al. Science 272:1668-1671(1996).
Hahn H., et al. J. Biol. Chem. 271:12125-12128(1996).
Humphray S.J., et al. Nature 429:369-374(2004).
Nagao K., et al. Genomics 85:462-471(2005).
Shimokawa T., et al. Oncogene 26:4889-4896(2007).

Patched Antibody - Citations

- [The sonic hedgehog pathway mediates Tongxinluo capsule-induced protection against blood-brain barrier disruption after ischemic stroke in mice.](#)