

**PTTG1/2/3 Antibody**  
**Purified Rabbit Polyclonal Antibody (Pab)**  
**Catalog # AP51461**

**Specification**

---

**PTTG1/2/3 Antibody - Product Information**

Application	WB
Primary Accession	<a href="#">O95997</a>
Reactivity	Human
Host	Rabbit
Clonality	Polyclonal
Calculated MW	29 KDa
Antigen Region	121 - 180

**PTTG1/2/3 Antibody - Additional Information**

**Gene ID** 9232

**Other Names**

Securin, Esp1-associated protein, Pituitary tumor-transforming gene 1 protein, Tumor-transforming protein 1, hPTTG, PTTG1, EAP1, PTTG, TUTR1

**Target/Specificity**

KLH-conjugated synthetic peptide encompassing a sequence within the center region of human PTTG1/2/3. The exact sequence is proprietary.

**Dilution**

WB~~ 1:1000

**Format**

0.01M PBS, pH 7.2, 0.09% (W/V) Sodium azide, Glycerol 50%

**Storage**

Store at -20 °C. Stable for 12 months from date of receipt

**PTTG1/2/3 Antibody - Protein Information**

**Name** PTTG1

**Synonyms** EAP1, PTTG, TUTR1

**Function**

Regulatory protein, which plays a central role in chromosome stability, in the p53/TP53 pathway, and DNA repair. Probably acts by blocking the action of key proteins. During the mitosis, it blocks Separase/ESPL1 function, preventing the proteolysis of the cohesin complex and the subsequent segregation of the chromosomes. At the onset of anaphase, it is ubiquitinated, conducting to its destruction and to the liberation of ESPL1. Its function is however not limited to a blocking activity, since it is required to activate ESPL1. Negatively regulates the transcriptional activity and related

apoptosis activity of TP53. The negative regulation of TP53 may explain the strong transforming capability of the protein when it is overexpressed. May also play a role in DNA repair via its interaction with Ku, possibly by connecting DNA damage-response pathways with sister chromatid separation.

**Cellular Location**

Cytoplasm. Nucleus.

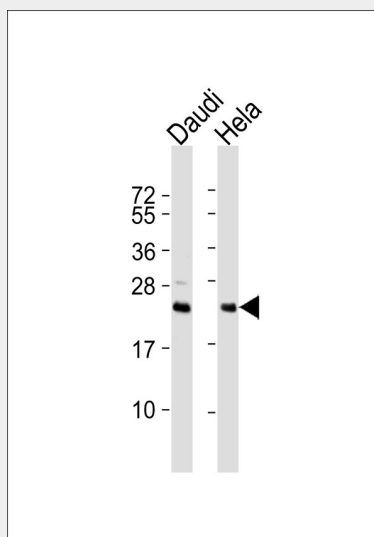
**Tissue Location**

Expressed at low level in most tissues, except in adult testis, where it is highly expressed. Overexpressed in many patients suffering from pituitary adenomas, primary epithelial neoplasias, and esophageal cancer.

**PTTG1/2/3 Antibody - Protocols**

Provided below are standard protocols that you may find useful for product applications.

- [Western Blot](#)
- [Blocking Peptides](#)
- [Dot Blot](#)
- [Immunohistochemistry](#)
- [Immunofluorescence](#)
- [Immunoprecipitation](#)
- [Flow Cytometry](#)
- [Cell Culture](#)

**PTTG1/2/3 Antibody - Images**

All lanes : Anti-PTTG1/2/3 Antibody at 1:1000 dilution Lane 1: Daudi whole cell lysates Lane 2: HeLa whole cell lysates Lysates/proteins at 20 µg per lane. Secondary Goat Anti-Rabbit IgG, (H+L), Peroxidase conjugated at 1/10000 dilution Predicted band size : 22 kDa Blocking/Dilution buffer: 5% NFDM/TBST.

**PTTG1/2/3 Antibody - Background**

Regulatory protein, which plays a central role in chromosome stability, in the p53/TP53 pathway, and DNA repair. Probably acts by blocking the action of key proteins. During the mitosis, it blocks

Separase/ESPL1 function, preventing the proteolysis of the cohesin complex and the subsequent segregation of the chromosomes. At the onset of anaphase, it is ubiquitinated, conducting to its destruction and to the liberation of ESPL1. Its function is however not limited to a blocking activity, since it is required to activate ESPL1. Negatively regulates the transcriptional activity and related apoptosis activity of TP53. The negative regulation of TP53 may explain the strong transforming capability of the protein when it is overexpressed. May also play a role in DNA repair via its interaction with Ku, possibly by connecting DNA damage-response pathways with sister chromatid separation.

#### **PTTG1/2/3 Antibody - References**

Dominguez A., et al. *Oncogene* 17:2187-2193(1998).  
Mu Y., et al. Submitted (SEP-1998) to the EMBL/GenBank/DDBJ databases.  
Kakar S.S., et al. *Cytogenet. Cell Genet.* 84:211-216(1999).  
Kakar S.S., et al. *Gene* 240:317-324(1999).  
Zhang X., et al. *Mol. Endocrinol.* 13:156-166(1999).