

RAB20 Antibody
Purified Rabbit Polyclonal Antibody (Pab)
Catalog # AP51462**Specification**

RAB20 Antibody - Product Information

Application	WB
Primary Accession	Q9NX57
Reactivity	Human
Host	Rabbit
Clonality	Polyclonal
Calculated MW	29 KDa
Antigen Region	91 - 150

RAB20 Antibody - Additional Information**Gene ID** 55647**Other Names**

Ras-related protein Rab-20, RAB20

Target/Specificity

KLH conjugated synthetic peptide derived from human RAB20

Dilution

WB~~ 1:1000

Format

0.01M PBS, pH 7.2, 0.09% (W/V) Sodium azide, Glycerol 50%

Storage

Store at -20 °C.Stable for 12 months from date of receipt

RAB20 Antibody - Protein Information**Name** RAB20 ([HGNC:18260](#))**Function**

The small GTPases Rab are key regulators of intracellular membrane trafficking, from the formation of transport vesicles to their fusion with membranes. Rabs cycle between an inactive GDP-bound form and an active GTP-bound form that is able to recruit to membranes different sets of downstream effectors directly responsible for vesicle formation, movement, tethering and fusion (By similarity). RAB20 plays a role in apical endocytosis/recycling. Plays a role in the maturation and acidification of phagosomes that engulf pathogens, such as S.aureus and M.tuberculosis. Plays a role in the fusion of phagosomes with lysosomes.

Cellular Location

Golgi apparatus. Cytoplasmic vesicle, phagosome Cytoplasmic vesicle, phagosome membrane;

Lipid-anchor; Cytoplasmic side. Note=Highly enriched on apical endocytic structures in polarized epithelial cells of kidney proximal tubules (By similarity). Recruited to phagosomes containing S.aureus or M.tuberculosis (PubMed:21255211) {ECO:0000250|UniProtKB:P35295, ECO:0000269|PubMed:21255211}

Tissue Location

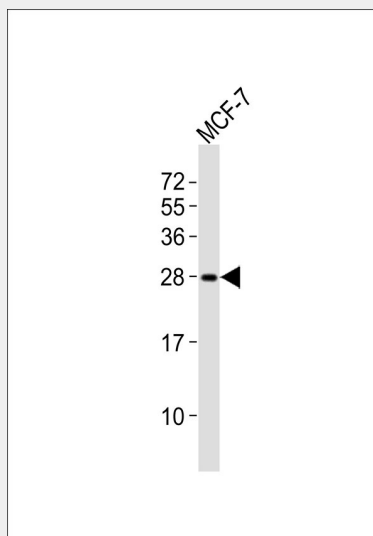
Low or absent expression in normal pancreas and stronger expression in 15 of 18 exocrine pancreatic adenocarcinomas (at protein level).

RAB20 Antibody - Protocols

Provided below are standard protocols that you may find useful for product applications.

- [Western Blot](#)
- [Blocking Peptides](#)
- [Dot Blot](#)
- [Immunohistochemistry](#)
- [Immunofluorescence](#)
- [Immunoprecipitation](#)
- [Flow Cytometry](#)
- [Cell Culture](#)

RAB20 Antibody - Images



Anti-RAB20 Antibody at 1:1000 dilution + MCF-7 whole cell lysates. Lysates/proteins at 20 µg per lane. Secondary Goat Anti-Rabbit IgG, (H+L), Peroxidase conjugated at 1/10000 dilution. Predicted band size : 26 kDa. Blocking/Dilution buffer: 5% NFDM/TBST.

RAB20 Antibody - Background

Plays a role in apical endocytosis/recycling. Plays a role in the maturation and acidification of phagosomes that engulf pathogens, such as S.aureus and M.tuberculosis. Plays a role in the fusion of phagosomes with lysosomes.

RAB20 Antibody - References

Amillet J.-M., et al. Hum. Pathol. 37:256-263(2006).

Ota T.,et al.Nat. Genet. 36:40-45(2004).

Dunham A.,et al.Nature 428:522-528(2004).

Mural R.J.,et al.Submitted (JUL-2005) to the EMBL/GenBank/DDBJ databases.

Seto S.,et al.Traffic 12:407-420(2011).