

RPL30 Antibody
Purified Rabbit Polyclonal Antibody (Pab)
Catalog # AP51485**Specification**

RPL30 Antibody - Product Information

Application	WB
Primary Accession	P62888
Reactivity	Human, Mouse, Rat
Host	Rabbit
Clonality	Polyclonal
Calculated MW	13 KDa
Antigen Region	51 - 110

RPL30 Antibody - Additional Information**Gene ID** 6156**Other Names**

60S ribosomal protein L30, RPL30

Target/Specificity

KLH-conjugated synthetic peptide encompassing a sequence within the C-term region of human RPL30. The exact sequence is proprietary.

Dilution

WB~~ 1:4000

Format

0.01M PBS, pH 7.2, 0.09% (W/V) Sodium azide, Glycerol 50%

Storage

Store at -20 °C. Stable for 12 months from date of receipt

RPL30 Antibody - Protein Information**Name** RPL30**Function**

Component of the large ribosomal subunit (PubMed: [23636399](http://www.uniprot.org/citations/23636399), PubMed: [32669547](http://www.uniprot.org/citations/32669547)). The ribosome is a large ribonucleoprotein complex responsible for the synthesis of proteins in the cell (PubMed: [23636399](http://www.uniprot.org/citations/23636399), PubMed: [32669547](http://www.uniprot.org/citations/32669547)).

Cellular Location

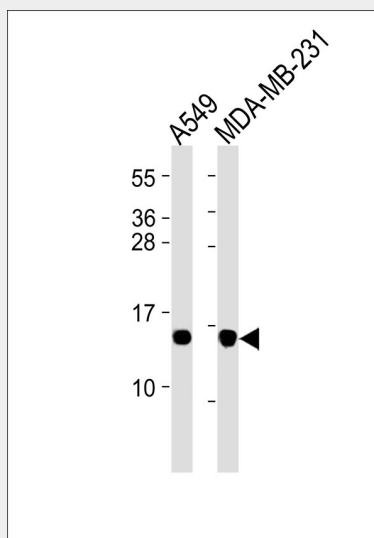
Cytoplasm.

RPL30 Antibody - Protocols

Provided below are standard protocols that you may find useful for product applications.

- [Western Blot](#)
- [Blocking Peptides](#)
- [Dot Blot](#)
- [Immunohistochemistry](#)
- [Immunofluorescence](#)
- [Immunoprecipitation](#)
- [Flow Cytometry](#)
- [Cell Culture](#)

RPL30 Antibody - Images



All lanes : Anti-RPL30 Antibody at 1:4000 dilution Lane 1: A549 whole cell lysates Lane 2: MDA-MB-231 whole cell lysates Lysates/proteins at 20 µg per lane. Secondary Goat Anti-Rabbit IgG, (H+L), Peroxidase conjugated at 1/10000 dilution Predicted band size : 12 kDa Blocking/Dilution buffer: 5% NFDM/TBST.

RPL30 Antibody - References

- Filipenko M.L., et al. Submitted (MAY-1994) to the EMBL/GenBank/DDBJ databases.
Bhat K.S., et al. Submitted (MAY-1998) to the EMBL/GenBank/DDBJ databases.
Yoshihama M., et al. Genome Res. 12:379-390(2002).
Ota T., et al. Nat. Genet. 36:40-45(2004).
Mural R.J., et al. Submitted (JUL-2005) to the EMBL/GenBank/DDBJ databases.