

**RPS4Y1 Antibody**  
**Purified Rabbit Polyclonal Antibody (Pab)**  
**Catalog # AP51490****Specification**

---

**RPS4Y1 Antibody - Product Information**

Application	<b>WB</b>
Primary Accession	<a href="#">P22090</a>
Reactivity	<b>Human</b>
Host	<b>Rabbit</b>
Clonality	<b>Polyclonal</b>
Calculated MW	<b>29 KDa</b>
Antigen Region	<b>201 - 260</b>

**RPS4Y1 Antibody - Additional Information****Gene ID** 6192**Other Names**

40S ribosomal protein S4, Y isoform 1, RPS4Y1, RPS4Y

**Target/Specificity**

KLH conjugated synthetic peptide derived from human RPS4Y1

**Dilution**

WB~~ 1:1000

**Format**

0.01M PBS, pH 7.2, 0.09% (W/V) Sodium azide, Glycerol 50%

**Storage**

Store at -20 °C. Stable for 12 months from date of receipt

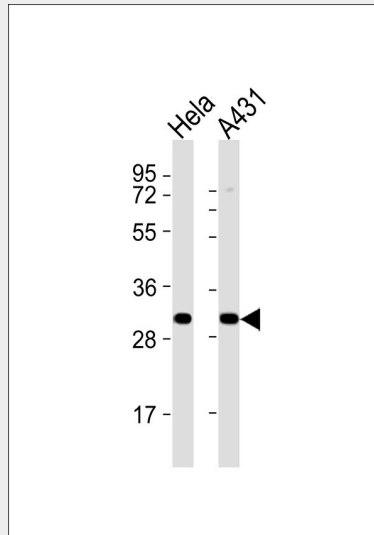
**RPS4Y1 Antibody - Protein Information****Name** RPS4Y1**Synonyms** RPS4Y**RPS4Y1 Antibody - Protocols**

Provided below are standard protocols that you may find useful for product applications.

- [Western Blot](#)
- [Blocking Peptides](#)
- [Dot Blot](#)

- [Immunohistochemistry](#)
- [Immunofluorescence](#)
- [Immunoprecipitation](#)
- [Flow Cytometry](#)
- [Cell Culture](#)

### RPS4Y1 Antibody - Images



All lanes : Anti-RPS4Y1 Antibody at 1:1000 dilution Lane 1: Hela whole cell lysates Lane 2: A431 whole cell lysates Lysates/proteins at 20 µg per lane. Secondary Goat Anti-Rabbit IgG, (H+L), Peroxidase conjugated at 1/10000 dilution Predicted band size : 29 kDa Blocking/Dilution buffer: 5% NFDm/TBST.

### RPS4Y1 Antibody - References

- Fisher E.M.C., et al. Cell 63:1205-1218(1990).  
Zuo L., et al. Submitted (JAN-1998) to the EMBL/GenBank/DDBJ databases.  
Zhang C., et al. Submitted (DEC-1998) to the EMBL/GenBank/DDBJ databases.  
Ota T., et al. Nat. Genet. 36:40-45(2004).  
Mural R.J., et al. Submitted (JUL-2005) to the EMBL/GenBank/DDBJ databases.