

**RPS9 Antibody**  
**Purified Rabbit Polyclonal Antibody (Pab)**  
**Catalog # AP51492**

**Specification**

---

**RPS9 Antibody - Product Information**

Application	WB
Primary Accession	<a href="#">P46781</a>
Reactivity	Human, Mouse, Rat
Host	Rabbit
Clonality	Polyclonal
Calculated MW	23 KDa
Antigen Region	21 - 80

**RPS9 Antibody - Additional Information**

**Gene ID** 6203

**Other Names**

40S ribosomal protein S9, RPS9

**Target/Specificity**

KLH conjugated synthetic peptide derived from human RPS9

**Dilution**

WB~~ 1:1000

**Format**

0.01M PBS, pH 7.2, 0.09% (W/V) Sodium azide, Glycerol 50%

**Storage**

Store at -20 °C. Stable for 12 months from date of receipt

**RPS9 Antibody - Protein Information**

**Name** RPS9 ([HGNC:10442](#))

**Function**

Component of the small ribosomal subunit (PubMed: <a href="http://www.uniprot.org/citations/23636399" target="\_blank">23636399</a>). The ribosome is a large ribonucleoprotein complex responsible for the synthesis of proteins in the cell (PubMed: <a href="http://www.uniprot.org/citations/23636399" target="\_blank">23636399</a>). Part of the small subunit (SSU) processome, first precursor of the small eukaryotic ribosomal subunit. During the assembly of the SSU processome in the nucleolus, many ribosome biogenesis factors, an RNA chaperone and ribosomal proteins associate with the nascent pre-rRNA and work in concert to generate RNA folding, modifications, rearrangements and cleavage as well as targeted degradation of pre-ribosomal RNA by the RNA exosome (PubMed: <a href="http://www.uniprot.org/citations/34516797" target="\_blank">34516797</a>).

### Cellular Location

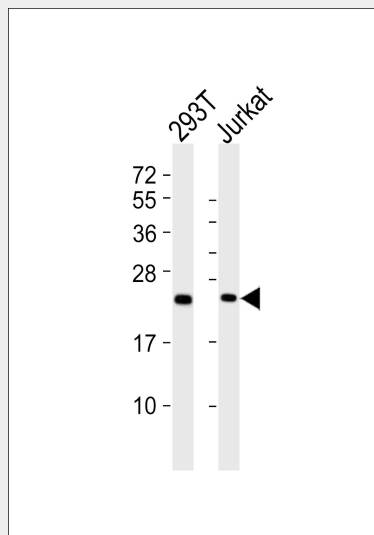
Cytoplasm. Nucleus, nucleolus. Note=Localized in cytoplasmic mRNP granules containing untranslated mRNAs.

### RPS9 Antibody - Protocols

Provided below are standard protocols that you may find useful for product applications.

- [Western Blot](#)
- [Blocking Peptides](#)
- [Dot Blot](#)
- [Immunohistochemistry](#)
- [Immunofluorescence](#)
- [Immunoprecipitation](#)
- [Flow Cytometry](#)
- [Cell Culture](#)

### RPS9 Antibody - Images



All lanes : Anti-RPS9 Antibody at 1:1000 dilution Lane 1: 293T whole cell lysates Lane 2: Jurkat whole cell lysates Lysates/proteins at 20 µg per lane. Secondary Goat Anti-Rabbit IgG, (H+L), Peroxidase conjugated at 1/10000 dilution Predicted band size : 23 kDa Blocking/Dilution buffer: 5% NFDm/TBST.

### RPS9 Antibody - References

- Frigerio J.-M., et al. *Biochim. Biophys. Acta* 1262:64-68(1995).  
Yoshihama M., et al. *Genome Res.* 12:379-390(2002).  
Grimwood J., et al. *Nature* 428:529-535(2004).  
Mural R.J., et al. Submitted (JUL-2005) to the EMBL/GenBank/DDBJ databases.  
Vladimirov S.N., et al. *Eur. J. Biochem.* 239:144-149(1996).