

**TGF beta 2 Antibody**  
**Purified Rabbit Polyclonal Antibody (Pab)**  
**Catalog # AP51557**

**Specification**

---

**TGF beta 2 Antibody - Product Information**

Application	WB, IHC-P, E
Primary Accession	<a href="#">P61812</a>
Reactivity	Human, Mouse, Rat
Host	Rabbit
Clonality	Polyclonal
Calculated MW	25 KDa

**TGF beta 2 Antibody - Additional Information**

**Gene ID** 7042

**Other Names**

Transforming growth factor beta-2, TGF-beta-2, BSC-1 cell growth inhibitor, Cetermin, Glioblastoma-derived T-cell suppressor factor, G-TSF, Polyergin, Latency-associated peptide, LAP, TGFB2

**Target/Specificity**

KLH-conjugated synthetic peptide encompassing a sequence within the C-term region of human TGF beta 2. The exact sequence is proprietary.

**Dilution**

WB~~1/500 - 1/1000

IHC-P~~N/A

E~~N/A

**Format**

0.01M PBS, pH 7.2, 0.09% (W/V) Sodium azide, Glycerol 50%

**Storage**

Store at -20 °C.Stable for 12 months from date of receipt

**TGF beta 2 Antibody - Protein Information**

**Name** TGFB2

**Function**

[Transforming growth factor beta-2 proprotein]: Precursor of the Latency-associated peptide (LAP) and Transforming growth factor beta-2 (TGF-beta-2) chains, which constitute the regulatory and active subunit of TGF-beta-2, respectively.

**Cellular Location**

[Latency-associated peptide]: Secreted, extracellular space, extracellular matrix

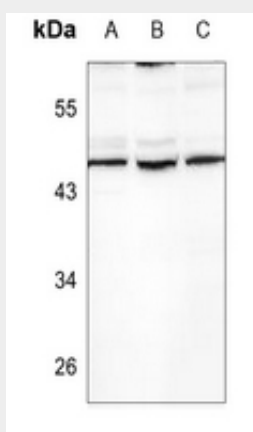
{ECO:0000250|UniProtKB:P01137}

## TGF beta 2 Antibody - Protocols

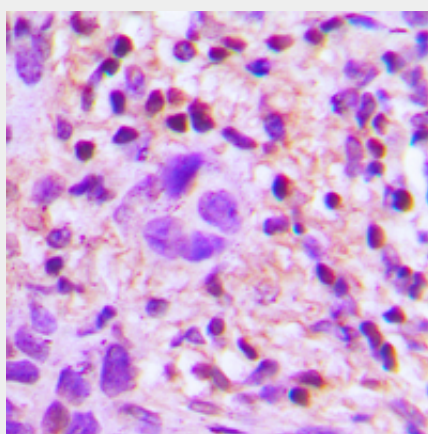
Provided below are standard protocols that you may find useful for product applications.

- [Western Blot](#)
- [Blocking Peptides](#)
- [Dot Blot](#)
- [Immunohistochemistry](#)
- [Immunofluorescence](#)
- [Immunoprecipitation](#)
- [Flow Cytometry](#)
- [Cell Culture](#)

## TGF beta 2 Antibody - Images



Western blot analysis of TGF beta 2 expression in HEK293T (A); A375 (B); MCF7 (C) whole cell lysates.



Immunohistochemical analysis of TGF beta 2 staining in human lung cancer formalin fixed paraffin embedded tissue section. The section was pre-treated using heat mediated antigen retrieval with sodium citrate buffer (pH 6.0). The section was then incubated with the antibody at room temperature and detected using an HRP conjugated compact polymer system. DAB was used as the chromogen. The section was then counterstained with haematoxylin and mounted with DPX.

**TGF beta 2 Antibody - Background**

TGF-beta 2 has suppressive effects on interleukin-2 dependent T-cell growth.

**TGF beta 2 Antibody - References**

de Martin R.,et al.EMBO J. 6:3673-3677(1987).

Madisen L.,et al.DNA 7:1-8(1988).

Webb N.R.,et al.DNA 7:493-497(1988).

Ota T.,et al.Nat. Genet. 36:40-45(2004).

Mural R.J.,et al.Submitted (SEP-2005) to the EMBL/GenBank/DDBJ databases.