

CCDC62 Antibody (C-term)
Affinity Purified Rabbit Polyclonal Antibody (Pab)
Catalog # AP5157b**Specification**

CCDC62 Antibody (C-term) - Product Information

Application	IHC-P, WB,E
Primary Accession	Q6P9F0
Reactivity	Human
Host	Rabbit
Clonality	Polyclonal
Isotype	Rabbit IgG
Calculated MW	77748
Antigen Region	651-679

CCDC62 Antibody (C-term) - Additional Information**Gene ID** 84660**Other Names**

Coiled-coil domain-containing protein 62, Protein TSP-NY, Protein aaa, CCDC62

Target/Specificity

This CCDC62 antibody is generated from rabbits immunized with a KLH conjugated synthetic peptide between 651-679 amino acids from the C-terminal region of human CCDC62.

Dilution

IHC-P~~1:50~100

WB~~1:1000

E~~Use at an assay dependent concentration.

Format

Purified polyclonal antibody supplied in PBS with 0.09% (W/V) sodium azide. This antibody is purified through a protein A column, followed by peptide affinity purification.

Storage

Maintain refrigerated at 2-8°C for up to 2 weeks. For long term storage store at -20°C in small aliquots to prevent freeze-thaw cycles.

Precautions

CCDC62 Antibody (C-term) is for research use only and not for use in diagnostic or therapeutic procedures.

CCDC62 Antibody (C-term) - Protein Information**Name** CCDC62**Function** Nuclear receptor coactivator that can enhance preferentially estrogen receptors ESR1

and ESR2 transactivation. Also modulates progesterone/PGR, glucocorticoid/NR3C1 and androgen/AR receptors transactivation, although at lower level; little effect on vitamin D receptor/VDR. Required for normal spermiogenesis. It probably plays a role in acrosome formation (By similarity).

Cellular Location

Cytoplasm. Nucleus. Cytoplasmic vesicle, secretory vesicle, acrosome. Note=Mainly nuclear

Tissue Location

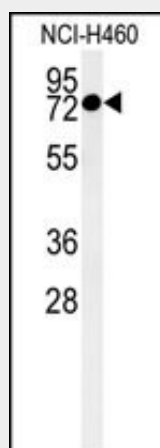
Highly expressed in adult testis. Expressed in both prostate epithelial and stromal cells, with predominant expression in epithelial cells (at protein level) (PubMed:19126643). Not detected in prostate by RT-PCR (PubMed:19165854). Overexpressed in various cancers {ECO:0000269|PubMed:19126643, ECO:0000269|PubMed:19165854, ECO:0000269|Ref.1, ECO:0000269|Ref.4}

CCDC62 Antibody (C-term) - Protocols

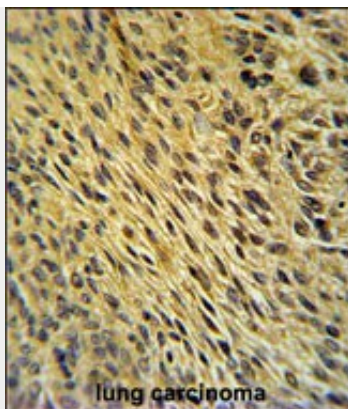
Provided below are standard protocols that you may find useful for product applications.

- [Western Blot](#)
- [Blocking Peptides](#)
- [Dot Blot](#)
- [Immunohistochemistry](#)
- [Immunofluorescence](#)
- [Immunoprecipitation](#)
- [Flow Cytometry](#)
- [Cell Culture](#)

CCDC62 Antibody (C-term) - Images



Western blot analysis of CCDC62 Antibody (C-term) (Cat. #AP5157b) in NCI-H460 cell line lysates (35ug/lane).CCDC62 (arrow) was detected using the purified Pab.



CCDC62 Antibody (C-term) (Cat. #AP5157b) immunohistochemistry analysis in formalin fixed and paraffin embedded human lung carcinoma followed by peroxidase conjugation of the secondary antibody and DAB staining. This data demonstrates the use of the CCDC62 Antibody (C-term) for immunohistochemistry. Clinical relevance has not been evaluated.

CCDC62 Antibody (C-term) - Background

The function of this protein has not been specifically defined.

CCDC62 Antibody (C-term) - References

Domae, S., et al. Int. J. Cancer 124(10):2347-2352(2009)
Chen, M., et al. Carcinogenesis 30(5):841-850(2009)
Chen, M., et al. Prostate 68(12):1273-1282(2008)