

**UBE2A/B Antibody**  
**Purified Rabbit Polyclonal Antibody (Pab)**  
**Catalog # AP51597****Specification**

---

**UBE2A/B Antibody - Product Information**

Application	WB
Primary Accession	<a href="#">P49459</a>
Reactivity	Human, Mouse, Rat
Host	Rabbit
Clonality	Polyclonal
Calculated MW	17 KDa
Antigen Region	91 - 150

**UBE2A/B Antibody - Additional Information****Gene ID** 7319**Other Names**

Ubiquitin-conjugating enzyme E2 A, RAD6 homolog A, HR6A, hHR6A, Ubiquitin carrier protein A, Ubiquitin-protein ligase A, UBE2A, RAD6A

**Target/Specificity**

KLH conjugated synthetic peptide derived from human UBE2A/B

**Dilution**

WB~~ 1:1000

**Format**

0.01M PBS, pH 7.2, 0.09% (W/V) Sodium azide, Glycerol 50%

**Storage**

Store at -20 °C. Stable for 12 months from date of receipt

**UBE2A/B Antibody - Protein Information****Name** UBE2A**Synonyms** RAD6A**Function**

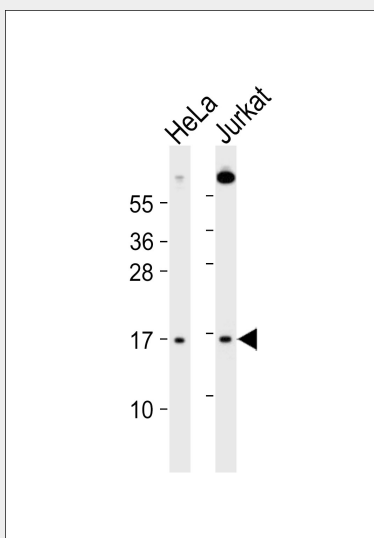
Accepts ubiquitin from the E1 complex and catalyzes its covalent attachment to other proteins. In association with the E3 enzyme BRE1 (RNF20 and/or RNF40), it plays a role in transcription regulation by catalyzing the monoubiquitination of histone H2B at 'Lys- 120' to form H2BK120ub1. H2BK120ub1 gives a specific tag for epigenetic transcriptional activation, elongation by RNA polymerase II, telomeric silencing, and is also a prerequisite for H3K4me and H3K79me formation. In vitro catalyzes 'Lys-11', as well as 'Lys-48'-linked polyubiquitination. Required for postreplication repair of UV-damaged DNA.

## UBE2A/B Antibody - Protocols

Provided below are standard protocols that you may find useful for product applications.

- [Western Blot](#)
- [Blocking Peptides](#)
- [Dot Blot](#)
- [Immunohistochemistry](#)
- [Immunofluorescence](#)
- [Immunoprecipitation](#)
- [Flow Cytometry](#)
- [Cell Culture](#)

## UBE2A/B Antibody - Images



All lanes : Anti-UBE2A/B Antibody at 1:1000 dilution Lane 1: HeLa whole cell lysates Lane 2: Jurkat whole cell lysates Lysates/proteins at 20 µg per lane. Secondary Goat Anti-Rabbit IgG, (H+L), Peroxidase conjugated at 1/10000 dilution Predicted band size : 17 kDa Blocking/Dilution buffer: 5% NFDM/TBST.

## UBE2A/B Antibody - Background

Accepts ubiquitin from the E1 complex and catalyzes its covalent attachment to other proteins. In association with the E3 enzyme BRE1 (RNF20 and/or RNF40), it plays a role in transcription regulation by catalyzing the monoubiquitination of histone H2B at 'Lys-120' to form H2BK120ub1. H2BK120ub1 gives a specific tag for epigenetic transcriptional activation, elongation by RNA polymerase II, telomeric silencing, and is also a prerequisite for H3K4me and H3K79me formation. In vitro catalyzes 'Lys-11', as well as 'Lys-48'-linked polyubiquitination. Required for postreplication repair of UV-damaged DNA.

## UBE2A/B Antibody - References

- Koken M.H.M., et al. Proc. Natl. Acad. Sci. U.S.A. 88:8865-8869(1991).  
Ota T., et al. Nat. Genet. 36:40-45(2004).  
Ross M.T., et al. Nature 434:325-337(2005).  
Mural R.J., et al. Submitted (SEP-2005) to the EMBL/GenBank/DBJ databases.  
Kim J., et al. Mol. Cell 20:759-770(2005).

