

ENTPD8 Antibody (C-term)
Affinity Purified Rabbit Polyclonal Antibody (Pab)
Catalog # AP5161B

Specification

ENTPD8 Antibody (C-term) - Product Information

Application	WB,E
Primary Accession	Q5MY95
Reactivity	Human, Hamster
Host	Rabbit
Clonality	Polyclonal
Isotype	Rabbit IgG
Calculated MW	53904
Antigen Region	396-423

ENTPD8 Antibody (C-term) - Additional Information

Gene ID 377841

Other Names

Ectonucleoside triphosphate diphosphohydrolase 8, E-NTPDase 8, NTPDase 8, NTPDase8, ENTPD8

Target/Specificity

This ENTPD8 antibody is generated from rabbits immunized with a KLH conjugated synthetic peptide between 396-423 amino acids from the C-terminal region of human ENTPD8.

Dilution

WB~~1:1000

E~~Use at an assay dependent concentration.

Format

Purified polyclonal antibody supplied in PBS with 0.09% (W/V) sodium azide. This antibody is purified through a protein A column, followed by peptide affinity purification.

Storage

Maintain refrigerated at 2-8°C for up to 2 weeks. For long term storage store at -20°C in small aliquots to prevent freeze-thaw cycles.

Precautions

ENTPD8 Antibody (C-term) is for research use only and not for use in diagnostic or therapeutic procedures.

ENTPD8 Antibody (C-term) - Protein Information

Name ENTPD8

Function Canalicular ectonucleoside NTPDase responsible for the main hepatic NTPDase activity. Ectonucleoside NTPDases catalyze the hydrolysis of gamma- and beta-phosphate residues of

nucleotides, playing a central role in concentration of extracellular nucleotides. Has activity toward ATP, ADP, UTP and UDP, but not toward AMP.

Cellular Location

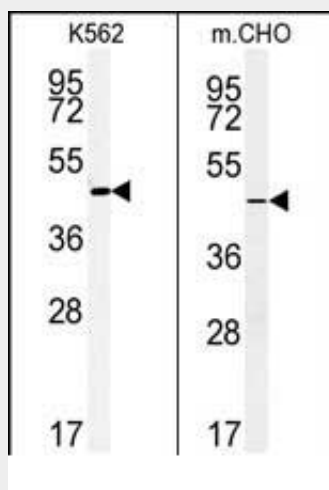
Cell membrane; Multi-pass membrane protein

ENTPD8 Antibody (C-term) - Protocols

Provided below are standard protocols that you may find useful for product applications.

- [Western Blot](#)
- [Blocking Peptides](#)
- [Dot Blot](#)
- [Immunohistochemistry](#)
- [Immunofluorescence](#)
- [Immunoprecipitation](#)
- [Flow Cytometry](#)
- [Cell Culture](#)

ENTPD8 Antibody (C-term) - Images



(LEFT)Western blot analysis of ENTPD8 Antibody (C-term) (Cat. #AP5161b) in K562 cell line lysates (35ug/lane).ENTPD8 (arrow) was detected using the purified Pab. (RIGHT)Western blot analysis of ENTPD8 Antibody (C-term) (Cat. #AP5161b) in CHO cell line lysates (35ug/lane).ENTPD8 (arrow) was detected using the purified Pab.

ENTPD8 Antibody (C-term) - Background

ENTPD8 is canalicular ectonucleoside NTPDase responsible for the main hepatic NTPDase activity. It is ectonucleoside NTPDases catalyze the hydrolysis of gamma-and beta-phosphate residues of nucleotides, playing a central role in concentration of extracellular nucleotides. ENTPD8 has activity toward ATP, ADP, UTP and UDP, but not toward AMP.

ENTPD8 Antibody (C-term) - References

Munkonda, M.N., et al. Biochem. Pharmacol. 74(10):1524-1534(2007)
Fausther, M., et al. Am. J. Physiol. Gastrointest. Liver Physiol. 292 (3), G785-G795 (2007)
Knowles, A.F., et al. Biochemistry 45(23):7323-7333(2006)