

ELP6 Antibody (C-term)
Affinity Purified Rabbit Polyclonal Antibody (Pab)
Catalog # AP5163b**Specification**

ELP6 Antibody (C-term) - Product Information

Application	WB, IHC-P, FC,E
Primary Accession	Q0PNE2
Reactivity	Human
Host	Rabbit
Clonality	Polyclonal
Isotype	Rabbit IgG
Antigen Region	223-252

ELP6 Antibody (C-term) - Additional Information**Gene ID** 54859**Other Names**

Elongator complex protein 6, Angiotonin-transactivated protein 1, Protein TMEM103, ELP6, ATP1, C3orf75, TMEM103

Target/Specificity

This C3orf75 antibody is generated from rabbits immunized with a KLH conjugated synthetic peptide between 223-252 amino acids from the C-terminal region of human C3orf75.

Dilution

WB~~1:1000

IHC-P~~1:50~100

FC~~1:10~50

E~~Use at an assay dependent concentration.

Format

Purified polyclonal antibody supplied in PBS with 0.09% (W/V) sodium azide. This antibody is purified through a protein A column, followed by peptide affinity purification.

Storage

Maintain refrigerated at 2-8°C for up to 2 weeks. For long term storage store at -20°C in small aliquots to prevent freeze-thaw cycles.

Precautions

ELP6 Antibody (C-term) is for research use only and not for use in diagnostic or therapeutic procedures.

ELP6 Antibody (C-term) - Protein Information**Name** ELP6 {ECO:0000303|PubMed:22854966, ECO:0000312|HGNC:HGNC:25976}

Function Component of the elongator complex which is required for multiple tRNA modifications, including mcm5U (5-methoxycarbonylmethyl uridine), mcm5s2U (5-methoxycarbonylmethyl-2-thiouridine), and ncm5U (5-carbamoylmethyl uridine) (PubMed:[29332244](#)). The elongator complex catalyzes formation of carboxymethyluridine in the wobble base at position 34 in tRNAs (PubMed:[22854966](#), PubMed:[29332244](#)). Involved in cell migration (By similarity).

Cellular Location

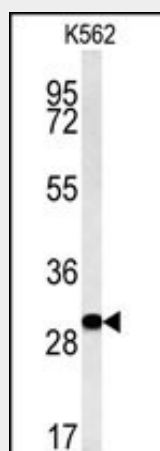
Cytoplasm. Nucleus. Note=Concentrates in the nucleus upon insulin stimulation.

ELP6 Antibody (C-term) - Protocols

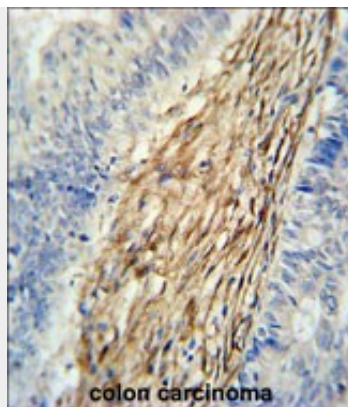
Provided below are standard protocols that you may find useful for product applications.

- [Western Blot](#)
- [Blocking Peptides](#)
- [Dot Blot](#)
- [Immunohistochemistry](#)
- [Immunofluorescence](#)
- [Immunoprecipitation](#)
- [Flow Cytometry](#)
- [Cell Culture](#)

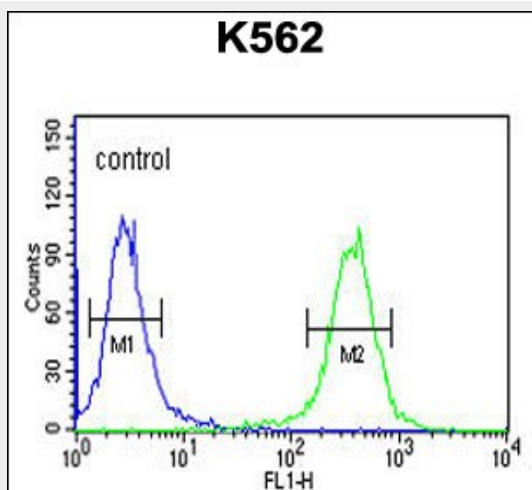
ELP6 Antibody (C-term) - Images



Western blot analysis of C3orf75 Antibody (C-term) (Cat. #AP5163b) in K562 cell line lysates (35ug/lane). C3orf75 (arrow) was detected using the purified Pab.



C3orf75 Antibody (C-term) (Cat. #AP5163b) immunohistochemistry analysis in formalin fixed and paraffin embedded human colon carcinoma followed by peroxidase conjugation of the secondary antibody and DAB staining. This data demonstrates the use of the C3orf75 Antibody (C-term) for immunohistochemistry. Clinical relevance has not been evaluated.



C3orf75 Antibody (C-term) (Cat. #AP5163b) flow cytometric analysis of K562 cells (right histogram) compared to a negative control cell (left histogram). FITC-conjugated goat-anti-rabbit secondary antibodies were used for the analysis.

ELP6 Antibody (C-term) - Background

The function of this protein has not been specifically defined.

ELP6 Antibody (C-term) - References

Gerhard, D.S., et al. Genome Res. 14 (10B), 2121-2127 (2004)