

KIAA1529 Antibody (C-term)
Affinity Purified Rabbit Polyclonal Antibody (Pab)
Catalog # AP5165b**Specification**

KIAA1529 Antibody (C-term) - Product Information

Application	FC, IHC-P, WB,E
Primary Accession	Q9P1Z9
Reactivity	Human, Mouse
Host	Rabbit
Clonality	Polyclonal
Isotype	Rabbit IgG
Calculated MW	197344
Antigen Region	1048-1077

KIAA1529 Antibody (C-term) - Additional Information**Gene ID** 100499483**Other Names**

Coiled-coil domain-containing protein 180, CCDC180, C9orf174, KIAA1529

Target/Specificity

This KIAA1529 antibody is generated from rabbits immunized with a KLH conjugated synthetic peptide between 1048-1077 amino acids from the C-terminal region of human KIAA1529.

Dilution

FC~~1:10~50

IHC-P~~1:50~100

WB~~1:1000

E~~Use at an assay dependent concentration.

Format

Purified polyclonal antibody supplied in PBS with 0.09% (W/V) sodium azide. This antibody is purified through a protein A column, followed by peptide affinity purification.

Storage

Maintain refrigerated at 2-8°C for up to 2 weeks. For long term storage store at -20°C in small aliquots to prevent freeze-thaw cycles.

Precautions

KIAA1529 Antibody (C-term) is for research use only and not for use in diagnostic or therapeutic procedures.

KIAA1529 Antibody (C-term) - Protein Information**Name** CCDC180

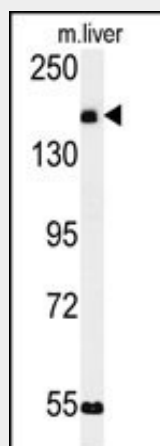
Synonyms C9orf174, KIAA1529

KIAA1529 Antibody (C-term) - Protocols

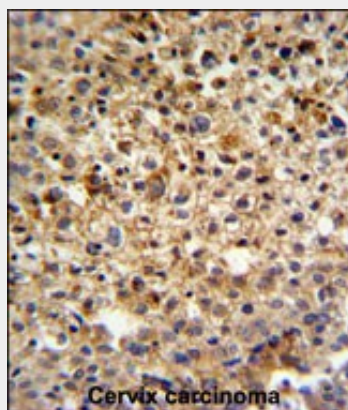
Provided below are standard protocols that you may find useful for product applications.

- [Western Blot](#)
- [Blocking Peptides](#)
- [Dot Blot](#)
- [Immunohistochemistry](#)
- [Immunofluorescence](#)
- [Immunoprecipitation](#)
- [Flow Cytometry](#)
- [Cell Culture](#)

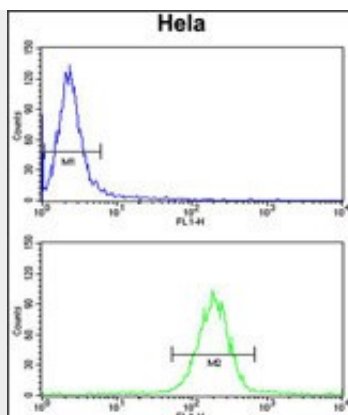
KIAA1529 Antibody (C-term) - Images



Western blot analysis of KIAA1529 Antibody (C-term) (Cat. #AP5165b) in mouse liver tissue lysates (35ug/lane). KIAA1529 (arrow) was detected using the purified Pab.



KIAA1529 Antibody (C-term) (Cat. #AP5165b) IHC analysis in formalin fixed and paraffin embedded human cervix carcinoma followed by peroxidase conjugation of the secondary antibody and DAB staining. This data demonstrates the use of the KIAA1529 Antibody (C-term) for immunohistochemistry. Clinical relevance has not been evaluated.



KIAA1529 Antibody (C-term) (Cat.#AP5165b) flow cytometry analysis of HeLa cells (bottom histogram) compared to a negative control cell (top histogram). FITC-conjugated goat-anti-rabbit secondary antibodies were used for the analysis.

KIAA1529 Antibody (C-term) - Background

The function of this protein has not been specifically defined.

KIAA1529 Antibody (C-term) - References

Vieira, A.R., et al. Genet. Med. 10(9):668-674(2008)