

POLR2I Antibody
Purified Rabbit Polyclonal Antibody (Pab)
Catalog # AP51763**Specification**

POLR2I Antibody - Product Information

Application	WB
Primary Accession	P36954
Reactivity	Human, Mouse, Rat
Host	Rabbit
Clonality	Polyclonal
Calculated MW	14 KDa
Antigen Region	31 - 90

POLR2I Antibody - Additional Information**Gene ID** 5438**Other Names**

DNA-directed RNA polymerase II subunit RPB9, RNA polymerase II subunit B9, DNA-directed RNA polymerase II subunit I, RNA polymerase II 145 kDa subunit, RPB145, POLR2I

Target/Specificity

KLH conjugated synthetic peptide derived from human POLR2I

Dilution

WB~~ 1:4000

Format

0.01M PBS, pH 7.2, 0.09% (W/V) Sodium azide, Glycerol 50%

Storage

Store at -20 °C. Stable for 12 months from date of receipt

POLR2I Antibody - Protein Information**Name** POLR2I**Function**

Core component of RNA polymerase II (Pol II), a DNA-dependent RNA polymerase which synthesizes mRNA precursors and many functional non-coding RNAs using the four ribonucleoside triphosphates as substrates. Pol II is the central component of the basal RNA polymerase II transcription machinery. It is composed of mobile elements that move relative to each other. POLR2I/RPB9 is part of the upper jaw surrounding the central large cleft and thought to grab the incoming DNA template.

Cellular Location

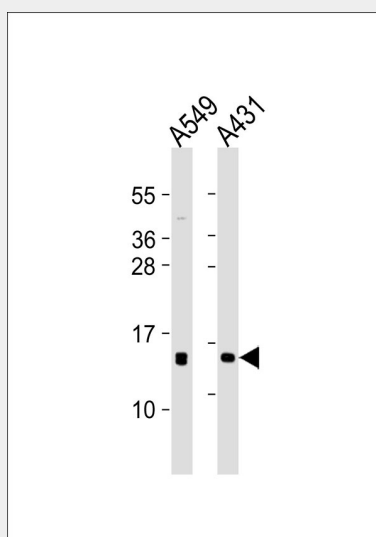
Nucleus, nucleolus.

POLR2I Antibody - Protocols

Provided below are standard protocols that you may find useful for product applications.

- [Western Blot](#)
- [Blocking Peptides](#)
- [Dot Blot](#)
- [Immunohistochemistry](#)
- [Immunofluorescence](#)
- [Immunoprecipitation](#)
- [Flow Cytometry](#)
- [Cell Culture](#)

POLR2I Antibody - Images



All lanes : Anti-POLR2I Antibody at 1:4000 dilution Lane 1: A549 whole cell lysates Lane 2: A431 whole cell lysates Lysates/proteins at 20 µg per lane. Secondary Goat Anti-Rabbit IgG, (H+L), Peroxidase conjugated at 1/10000 dilution Predicted band size : 15 kDa Blocking/Dilution buffer: 5% NFDM/TBST.

POLR2I Antibody - Background

DNA-dependent RNA polymerase catalyzes the transcription of DNA into RNA using the four ribonucleoside triphosphates as substrates. Component of RNA polymerase II which synthesizes mRNA precursors and many functional non-coding RNAs. Pol II is the central component of the basal RNA polymerase II transcription machinery. It is composed of mobile elements that move relative to each other. RPB9 is part of the upper jaw surrounding the central large cleft and thought to grab the incoming DNA template (By similarity).

POLR2I Antibody - References

- Acker J., et al. Nucleic Acids Res. 21:5345-5350(1993).
Ota T., et al. Nat. Genet. 36:40-45(2004).
Grimwood J., et al. Nature 428:529-535(2004).
Kershner E., et al. J. Biol. Chem. 273:34444-34453(1998).
Burkard T.R., et al. BMC Syst. Biol. 5:17-17(2011).