

**NACAD Antibody**  
**Purified Rabbit Polyclonal Antibody (Pab)**  
**Catalog # AP51798****Specification**

---

**NACAD Antibody - Product Information**

Application	WB
Primary Accession	<a href="#">O15069</a>
Reactivity	Human, Mouse, Rat
Host	Rabbit
Clonality	Polyclonal
Calculated MW	161 KDa
Antigen Region	351 - 410

**NACAD Antibody - Additional Information****Gene ID** 23148**Other Names**

NAC-alpha domain-containing protein 1, NACAD, KIAA0363

**Target/Specificity**

KLH conjugated synthetic peptide derived from human NACAD

**Dilution**

WB~~ 1:1000

**Format**

0.01M PBS, pH 7.2, 0.09% (W/V) Sodium azide, Glycerol 50%

**Storage**

Store at -20 °C.Stable for 12 months from date of receipt

**NACAD Antibody - Protein Information****Name** NACAD**Synonyms** KIAA0363**Function**

May prevent inappropriate targeting of non-secretory polypeptides to the endoplasmic reticulum (ER). May bind to nascent polypeptide chains as they emerge from the ribosome and block their interaction with the signal recognition particle (SRP), which normally targets nascent secretory peptides to the ER. May also reduce the inherent affinity of ribosomes for protein translocation sites in the ER membrane (M sites) (By similarity).

**Cellular Location**

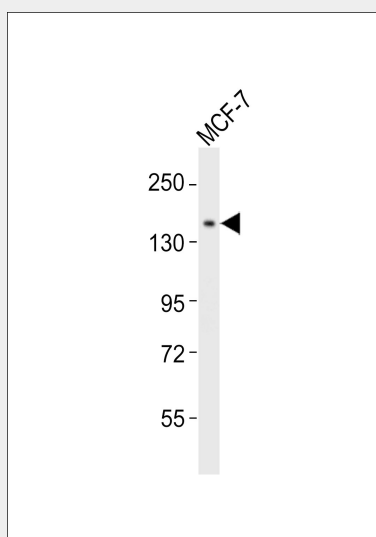
Cytoplasm. Nucleus.

## NACAD Antibody - Protocols

Provided below are standard protocols that you may find useful for product applications.

- [Western Blot](#)
- [Blocking Peptides](#)
- [Dot Blot](#)
- [Immunohistochemistry](#)
- [Immunofluorescence](#)
- [Immunoprecipitation](#)
- [Flow Cytometry](#)
- [Cell Culture](#)

## NACAD Antibody - Images



Anti-NACAD Antibody at 1:1000 dilution + MCF-7 whole cell lysates Lysates/proteins at 20 µg per lane. Secondary Goat Anti-Rabbit IgG, (H+L), Peroxidase conjugated at 1/10000 dilution Predicted band size : 161 kDa Blocking/Dilution buffer: 5% NFDM/TBST.

## NACAD Antibody - Background

May prevent inappropriate targeting of non-secretory polypeptides to the endoplasmic reticulum (ER). May bind to nascent polypeptide chains as they emerge from the ribosome and block their interaction with the signal recognition particle (SRP), which normally targets nascent secretory peptides to the ER. May also reduce the inherent affinity of ribosomes for protein translocation sites in the ER membrane (M sites) (By similarity).

## NACAD Antibody - References

Hillier L.W., et al. Nature 424:157-164(2003).  
Nagase T., et al. DNA Res. 4:141-150(1997).  
Rigbolt K.T., et al. Sci. Signal. 4:RS3-RS3(2011).