

ATXN2L Antibody (C-term)
Affinity Purified Rabbit Polyclonal Antibody (Pab)
Catalog # AP5183b**Specification**

ATXN2L Antibody (C-term) - Product Information

Application	FC, WB,E
Primary Accession	Q8WWM7
Reactivity	Human
Host	Rabbit
Clonality	Polyclonal
Isotype	Rabbit IgG
Calculated MW	113374
Antigen Region	1021-1048

ATXN2L Antibody (C-term) - Additional Information**Gene ID** 11273**Other Names**

Ataxin-2-like protein, Ataxin-2 domain protein, Ataxin-2-related protein, ATXN2L, A2D, A2LG, A2LP, A2RP

Target/Specificity

This ATXN2L antibody is generated from rabbits immunized with a KLH conjugated synthetic peptide between 1021-1048 amino acids from the C-terminal region of human ATXN2L.

Dilution

FC~~1:10~50

WB~~1:1000

E~~Use at an assay dependent concentration.

Format

Purified polyclonal antibody supplied in PBS with 0.09% (W/V) sodium azide. This antibody is purified through a protein A column, followed by peptide affinity purification.

Storage

Maintain refrigerated at 2-8°C for up to 2 weeks. For long term storage store at -20°C in small aliquots to prevent freeze-thaw cycles.

Precautions

ATXN2L Antibody (C-term) is for research use only and not for use in diagnostic or therapeutic procedures.

ATXN2L Antibody (C-term) - Protein Information**Name** ATXN2L

Synonyms A2D, A2LG, A2LP, A2RP

Function Involved in the regulation of stress granule and P-body formation.

Cellular Location

Membrane; Peripheral membrane protein. Cytoplasm. Nucleus speckle. Cytoplasmic granule. Note=Predominantly cytoplasmic but is also detected in nuclear speckles (PubMed:23209657). Component of cytoplasmic stress granules (PubMed:23209657). Inhibition of methylation alters nuclear localization (PubMed:25748791). Methylation does not seem to be required for localization to stress granules under stress conditions (PubMed:25748791).

Tissue Location

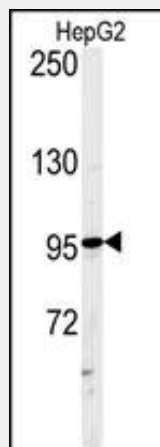
Expressed at high levels in thymus, lymph node, spleen, fetal kidney and adult testis. Constitutively associated with MPL and EPOR in hematopoietic cells.

ATXN2L Antibody (C-term) - Protocols

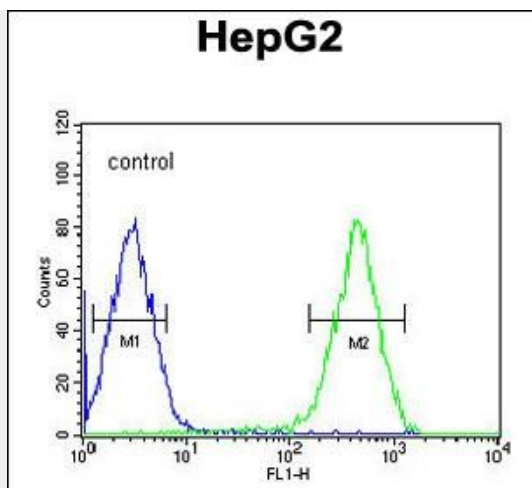
Provided below are standard protocols that you may find useful for product applications.

- [Western Blot](#)
- [Blocking Peptides](#)
- [Dot Blot](#)
- [Immunohistochemistry](#)
- [Immunofluorescence](#)
- [Immunoprecipitation](#)
- [Flow Cytometry](#)
- [Cell Culture](#)

ATXN2L Antibody (C-term) - Images



Western blot analysis of ATXN2L Antibody (C-term) (Cat. #AP5183b) in HepG2 cell line lysates (35ug/lane). ATXN2L (arrow) was detected using the purified Pab.



ATXN2L Antibody (C-term) (Cat. #AP5183b) flow cytometric analysis of HepG2 cells (right histogram) compared to a negative control cell (left histogram). FITC-conjugated goat-anti-rabbit secondary antibodies were used for the analysis.

ATXN2L Antibody (C-term) - Background

ATXN2L encodes an ataxin type 2 related protein of unknown function. This protein is a member of the spinocerebellar ataxia (SCAs) family, which is associated with a complex group of neurodegenerative disorders.

ATXN2L Antibody (C-term) - References

Imielinski, M., et al. Nat. Genet. 41(12):1335-1340(2009)
Sugiyama, N., et al. Mol. Cell Proteomics 6(6):1103-1109(2007)
Nonhoff, U., et al. Mol. Biol. Cell 18(4):1385-1396(2007)