

PPP1R35 Antibody (N-term)
Affinity Purified Rabbit Polyclonal Antibody (Pab)
Catalog # AP5193a

Specification

PPP1R35 Antibody (N-term) - Product Information

Application	WB, IHC-P,E
Primary Accession	Q8TAP8
Reactivity	Human, Mouse
Host	Rabbit
Clonality	Polyclonal
Isotype	Rabbit IgG
Antigen Region	41-69

PPP1R35 Antibody (N-term) - Additional Information

Gene ID 221908

Other Names

Protein phosphatase 1 regulatory subunit 35, PPP1R35, C7orf47

Target/Specificity

This PPP1R35 antibody is generated from rabbits immunized with a KLH conjugated synthetic peptide between 41-69 amino acids from the N-terminal region of human PPP1R35.

Dilution

WB~~1:1000

IHC-P~~1:50~100

E~~Use at an assay dependent concentration.

Format

Purified polyclonal antibody supplied in PBS with 0.09% (W/V) sodium azide. This antibody is purified through a protein A column, followed by peptide affinity purification.

Storage

Maintain refrigerated at 2-8°C for up to 2 weeks. For long term storage store at -20°C in small aliquots to prevent freeze-thaw cycles.

Precautions

PPP1R35 Antibody (N-term) is for research use only and not for use in diagnostic or therapeutic procedures.

PPP1R35 Antibody (N-term) - Protein Information

Name PPP1R35 ([HGNC:28320](#))

Function During centriole duplication, plays a role in the centriole elongation by promoting the recruitment of the microtubule-binding elongation machinery through its interaction with RTTN,

leading to the centriole to centrosome conversion (PubMed:[30168418](#), PubMed:[30230954](#)). In addition, may play a role in the primary cilia assembly (By similarity).

Cellular Location

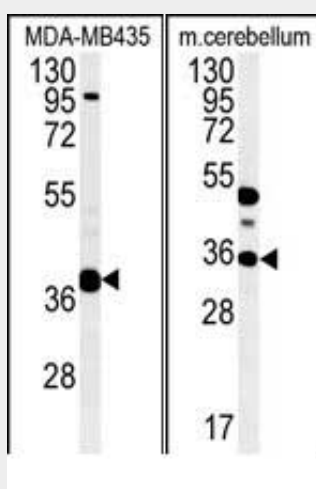
Cytoplasm, cytoskeleton, microtubule organizing center, centrosome. Cytoplasm, cytoskeleton, microtubule organizing center, centrosome, centriole Note=Recruited to the nascent daughter centriole early in the duplication cycle and localizes to the proximal centriolar lumen just above the cartwheel (PubMed:30168418, PubMed:30230954). Co-localizes with RTTN at the centriole (PubMed:30168418)

PPP1R35 Antibody (N-term) - Protocols

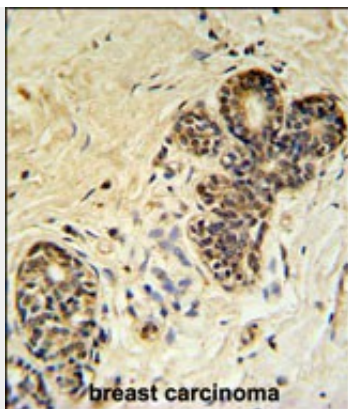
Provided below are standard protocols that you may find useful for product applications.

- [Western Blot](#)
- [Blocking Peptides](#)
- [Dot Blot](#)
- [Immunohistochemistry](#)
- [Immunofluorescence](#)
- [Immunoprecipitation](#)
- [Flow Cytometry](#)
- [Cell Culture](#)

PPP1R35 Antibody (N-term) - Images



(LEFT) Western blot analysis of PPP1R35 Antibody (N-term) (Cat. #AP5193a) in MDA-MB435 cell line lysates (35ug/lane).C7orf47 (arrow) was detected using the purified Pab. (RIGHT) Western blot analysis of PPP1R35 Antibody (N-term) (Cat. #AP5193a) in mouse cerebellum tissue lysates (35ug/lane). PPP1R35 (arrow) was detected using the purified Pab.



PPP1R35 Antibody (N-term) (Cat. #AP5193a) IHC analysis in formalin fixed and paraffin embedded human breast carcinoma followed by peroxidase conjugation of the secondary antibody and DAB staining. This data demonstrates the use of the PPP1R35 Antibody (N-term) for immunohistochemistry. Clinical relevance has not been evaluated.

PPP1R35 Antibody (N-term) - Background

The function of this protein has not been specifically defined.

PPP1R35 Antibody (N-term) - References

Scherer, S.W., et al. Science 300(5620):767-772(2003)