

**CD300LB Antibody (N-term)**  
**Affinity Purified Rabbit Polyclonal Antibody (Pab)**  
**Catalog # AP5203a****Specification**

---

**CD300LB Antibody (N-term) - Product Information**

Application	WB,E
Primary Accession	<a href="#">A8K4G0</a>
Reactivity	Human
Host	Rabbit
Clonality	Polyclonal
Isotype	Rabbit IgG
Calculated MW	22689
Antigen Region	57-85

**CD300LB Antibody (N-term) - Additional Information****Gene ID** 124599**Other Names**

CMRF35-like molecule 7, CLM-7, CD300 antigen-like family member B, CMRF35-A2, Immune receptor expressed on myeloid cells 3, IREM-3, Leukocyte mono-Ig-like receptor 5, Triggering receptor expressed on myeloid cells 5, TREM-5, CD300b, CD300LB, CD300B, CLM7, CMRF35A2, IREM3, LMIR5, TREM5

**Target/Specificity**

This CD300LB antibody is generated from rabbits immunized with a KLH conjugated synthetic peptide between 57-85 amino acids from the N-terminal region of human CD300LB.

**Dilution**

WB~~1:1000

E~~Use at an assay dependent concentration.

**Format**

Purified polyclonal antibody supplied in PBS with 0.09% (W/V) sodium azide. This antibody is purified through a protein A column, followed by peptide affinity purification.

**Storage**

Maintain refrigerated at 2-8°C for up to 2 weeks. For long term storage store at -20°C in small aliquots to prevent freeze-thaw cycles.

**Precautions**

CD300LB Antibody (N-term) is for research use only and not for use in diagnostic or therapeutic procedures.

**CD300LB Antibody (N-term) - Protein Information****Name** CD300LB

**Synonyms** CD300B, CLM7, CMRF35A2, IREM3, LMIR5, TR

**Function** Acts as an activating immune receptor through its interaction with ITAM-bearing adapter TYROBP, and also independently by recruitment of GRB2.

**Cellular Location**

Cell membrane; Single-pass type I membrane protein

**Tissue Location**

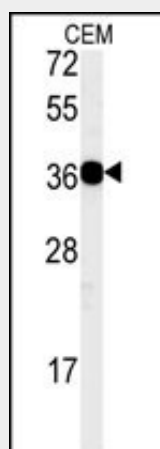
Expressed exclusively in myeloid lineages.

**CD300LB Antibody (N-term) - Protocols**

Provided below are standard protocols that you may find useful for product applications.

- [Western Blot](#)
- [Blocking Peptides](#)
- [Dot Blot](#)
- [Immunohistochemistry](#)
- [Immunofluorescence](#)
- [Immunoprecipitation](#)
- [Flow Cytometry](#)
- [Cell Culture](#)

**CD300LB Antibody (N-term) - Images**



Western blot analysis of CD300LB Antibody (N-term) (Cat. #AP5203a) in CEM cell line lysates (35ug/lane). CD300LB (arrow) was detected using the purified Pab.

**CD300LB Antibody (N-term) - Background**

CD300LB is a nonclassical activating receptor of the immunoglobulin (Ig) superfamily expressed on myeloid cells (Martinez-Barriocanal and Sayos, 2006).

**CD300LB Antibody (N-term) - References**

Yamanishi, Y., et al. Blood 111(2):688-698(2008)  
Martinez-Barriocanal, A., et al. J. Immunol. 177(5):2819-2830(2006)  
Clark, H.F., et al. Genome Res. 13(10):2265-2270(2003)