

**Rabbit Anti-GLP-1R Polyclonal Antibody**  
**Purified Rabbit Polyclonal Antibody (Pab)**  
**Catalog # AP52040****Specification**

---

**Rabbit Anti-GLP-1R Polyclonal Antibody - Product Information**

Application	WB, IHC-P, FC
Primary Accession	<a href="#">O35659</a>
Reactivity	Human, Mouse, Rat
Host	Rabbit
Clonality	Polyclonal

**Rabbit Anti-GLP-1R Polyclonal Antibody - Additional Information****Gene ID** 14652**Other Names**

GLP-1R; GLP1Rc; Glucagon-like peptide 1 receptor; GLP-1 receptor; GLP-1-R; Glp1r

**Dilution**

<span class = "dilution\_WB">WB~~1:100~1:500</span><br \><span class = "dilution\_IHC-P">IHC-P~~1:100~1:500</span><br \><span class = "dilution\_FC">FC~~1:20~1:100</span>

**Format**

0.01M TBS(pH7.4), 0.09% (W/V) sodium azide and 50% Glyce

**Storage**

Store at -20 °C for one year. Avoid repeated freeze/thaw cycles. When reconstituted in sterile pH 7.4 0.01M PBS or diluent of antibody the antibody is stable for at least two weeks at 2-4 °C.

**Rabbit Anti-GLP-1R Polyclonal Antibody - Protein Information****Name** Glp1r**Function**

G-protein coupled receptor for glucagon-like peptide 1 (GLP- 1) (PubMed:<a href="http://www.uniprot.org/citations/9568699" target="\_blank">9568699</a>). Ligand binding triggers activation of a signaling cascade that leads to the activation of adenylyl cyclase and increased intracellular cAMP levels (By similarity). Plays a role in regulating insulin secretion in response to GLP-1 (PubMed:<a href="http://www.uniprot.org/citations/9568699" target="\_blank">9568699</a>).

**Cellular Location**

Cell membrane; Multi-pass membrane protein {ECO:0000250|UniProtKB:P43220}

**Tissue Location**

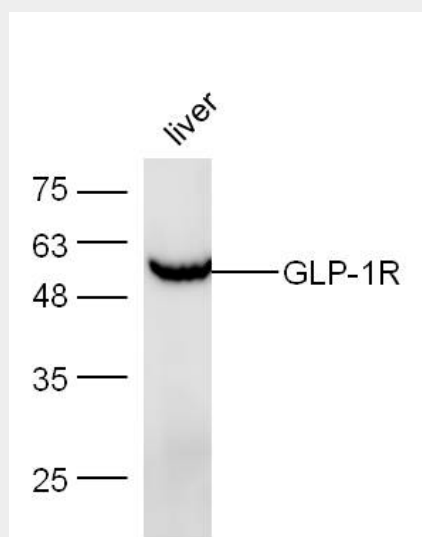
Detected in pancreatic islets (at protein level). Detected in pancreatic islets and lungs.

## Rabbit Anti-GLP-1R Polyclonal Antibody - Protocols

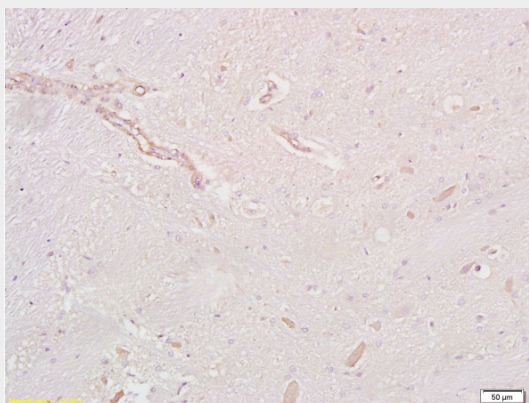
Provided below are standard protocols that you may find useful for product applications.

- [Western Blot](#)
- [Blocking Peptides](#)
- [Dot Blot](#)
- [Immunohistochemistry](#)
- [Immunofluorescence](#)
- [Immunoprecipitation](#)
- [Flow Cytometry](#)
- [Cell Culture](#)

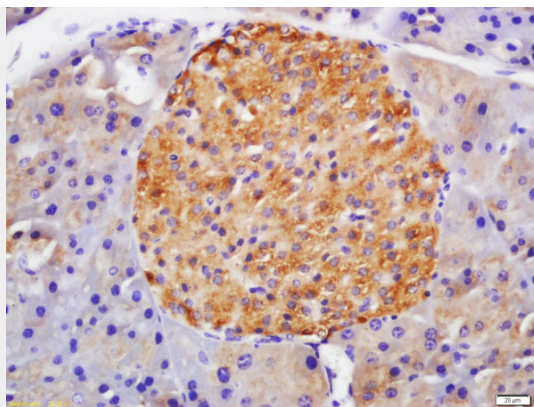
## Rabbit Anti-GLP-1R Polyclonal Antibody - Images



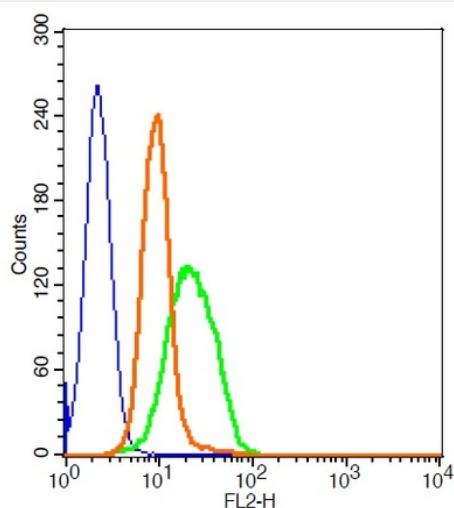
Mouse liver lysates probed with Anti-GLP-1R Polyclonal Antibody, Unconjugated (AP52040) at 1:300 overnight at 4°C. Followed by a conjugated secondary antibody at 1:5000 for 90 min at 37°C.



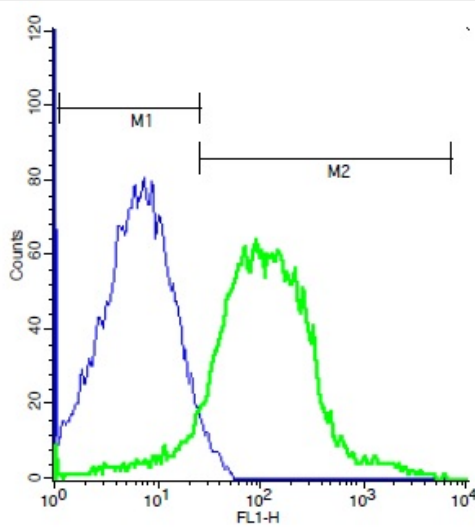
Formalin-fixed and paraffin embedded rat brain tissue labeled with Anti-GLP-1R Polyclonal Antibody, Unconjugated AP52040 at 1:200 followed by conjugation to the secondary antibody and DAB staining



Formalin-fixed and paraffin embedded mouse pancreas labeled with Anti-GLP-1R Polyclonal Antibody, Unconjugated AP52040 at 1:200 followed by conjugation to the secondary antibody and DAB staining



RSC96 cells probed with GLP-1R Polyclonal Antibody, PE Conjugated (AP52040) at 1:20 for 30 minutes compared to control cells (blue), secondary only (light blue) and isotype control (orange).



Mouse brain probed with Rabbit Anti-GLP-1R Polyclonal Antibody, Unconjugated AP52040 (green) at 1:100 for 40 minutes followed by a FITC conjugated secondary antibody compared to control

cells (blue).

### **Rabbit Anti-GLP-1R Polyclonal Antibody - Background**

This is a receptor for glucagon-like peptide 1. The activity of this receptor is mediated by G proteins which activate adenylyl cyclase.

### **Rabbit Anti-GLP-1R Polyclonal Antibody - Citations**

- [Liraglutide, a glucagon-like peptide-1 receptor agonist, facilitates osteogenic proliferation and differentiation in MC3T3-E1 cells through phosphoinositide 3-kinase \(PI3K\)/protein kinase B \(AKT\), extracellular signal-related kinase \(ERK\)1/2, and cAMP/protein kinase A \(PKA\) signaling pathways involving  \$\beta\$ -catenin.](#)