

CQ028 Antibody (C-term)
Affinity Purified Rabbit Polyclonal Antibody (Pab)
Catalog # AP5208b

Specification

CQ028 Antibody (C-term) - Product Information

Application	WB,E
Primary Accession	Q8IV36
Other Accession	Q8R1F6
Reactivity	Human
Predicted	Mouse
Host	Rabbit
Clonality	Polyclonal
Isotype	Rabbit IgG
Calculated MW	88745
Antigen Region	567-595

CQ028 Antibody (C-term) - Additional Information

Gene ID 283987

Other Names

Protein HID1, Down-regulated in multiple cancers 1, HID1 domain-containing protein, Protein hid-1 homolog, HID1, C17orf28, DMC1

Target/Specificity

This CQ028 antibody is generated from rabbits immunized with a KLH conjugated synthetic peptide between 567-595 amino acids from the C-terminal region of human CQ028.

Dilution

WB~~1:1000

E~~Use at an assay dependent concentration.

Format

Purified polyclonal antibody supplied in PBS with 0.09% (W/V) sodium azide. This antibody is purified through a protein A column, followed by peptide affinity purification.

Storage

Maintain refrigerated at 2-8°C for up to 2 weeks. For long term storage store at -20°C in small aliquots to prevent freeze-thaw cycles.

Precautions

CQ028 Antibody (C-term) is for research use only and not for use in diagnostic or therapeutic procedures.

CQ028 Antibody (C-term) - Protein Information

Name HID1

Synonyms C17orf28, DMC1

Function May play an important role in the development of cancers in a broad range of tissues.

Cellular Location

Cytoplasm. Golgi apparatus membrane; Lipid-anchor. Note=Shuttles between the cytosol and the Golgi apparatus

Tissue Location

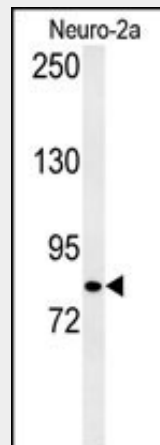
Expressed in heart, skeletal muscle, colon, spleen, kidney, liver, small intestine and lung. Highest expression is seen in brain and placenta. Loss of expression is seen in some breast, cervical, hepatocellular, lung, thyroid, gastric and renal cell-cancer lines. Highly expressed in secretory cell lines. Expressed in almost all regions of the brain, in cerebellum, anterior frontal cortex, and striatum.

CQ028 Antibody (C-term) - Protocols

Provided below are standard protocols that you may find useful for product applications.

- [Western Blot](#)
- [Blocking Peptides](#)
- [Dot Blot](#)
- [Immunohistochemistry](#)
- [Immunofluorescence](#)
- [Immunoprecipitation](#)
- [Flow Cytometry](#)
- [Cell Culture](#)

CQ028 Antibody (C-term) - Images



Western blot analysis of CQ028 Antibody (C-term) (Cat. #AP5208b) in Neuro-2a cell line lysates (35ug/lane).CQ028 (arrow) was detected using the purified Pab.

CQ028 Antibody (C-term) - Background

CQ028 may play an important role in the development of cancers in a broad range of tissues.

CQ028 Antibody (C-term) - References

Harada, H., et al. J. Hum. Genet. 46(2):90-95(2001) Masson, J.Y., et al. EMBO J.

18(22):6552-6560(1999)