

CT054 Antibody (Center)
Affinity Purified Rabbit Polyclonal Antibody (Pab)
Catalog # AP5210c**Specification**

CT054 Antibody (Center) - Product Information

Application	WB, FC,E
Primary Accession	Q9NQ40
Reactivity	Human
Host	Rabbit
Clonality	Polyclonal
Isotype	Rabbit IgG
Calculated MW	50805
Antigen Region	164-193

CT054 Antibody (Center) - Additional Information**Gene ID** 113278**Other Names**

Solute carrier family 52, riboflavin transporter, member 3, Riboflavin transporter 2, hRFT2, SLC52A3, C20orf54, RFT2, RFVT3

Target/Specificity

This CT054 antibody is generated from rabbits immunized with a KLH conjugated synthetic peptide between 164-193 amino acids from the Central region of human CT054.

Dilution

WB~~1:1000

FC~~1:10~50

Format

Purified polyclonal antibody supplied in PBS with 0.09% (W/V) sodium azide. This antibody is purified through a protein A column, followed by peptide affinity purification.

Storage

Maintain refrigerated at 2-8°C for up to 2 weeks. For long term storage store at -20°C in small aliquots to prevent freeze-thaw cycles.

Precautions

CT054 Antibody (Center) is for research use only and not for use in diagnostic or therapeutic procedures.

CT054 Antibody (Center) - Protein Information**Name** SLC52A3**Synonyms** C20orf54, RFT2, RFVT3

Function Plasma membrane transporter mediating the uptake by cells of the water soluble vitamin B2/riboflavin that plays a key role in biochemical oxidation-reduction reactions of the carbohydrate, lipid, and amino acid metabolism (PubMed:[20463145](#), PubMed:[22273710](#), PubMed:[24264046](#), PubMed:[27702554](#)). Humans are unable to synthesize vitamin B2/riboflavin and must obtain it via intestinal absorption (PubMed:[20463145](#)).

Cellular Location

Apical cell membrane; Multi-pass membrane protein. Cell membrane [Isoform 2]: Cytoplasm

Tissue Location

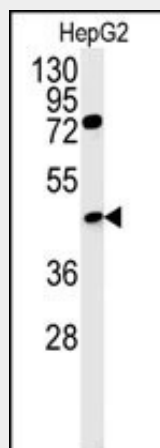
Predominantly expressed in testis. Highly expressed in small intestine and prostate.

CT054 Antibody (Center) - Protocols

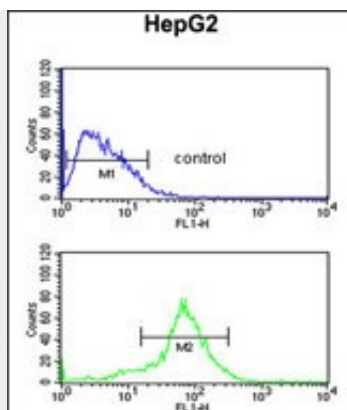
Provided below are standard protocols that you may find useful for product applications.

- [Western Blot](#)
- [Blocking Peptides](#)
- [Dot Blot](#)
- [Immunohistochemistry](#)
- [Immunofluorescence](#)
- [Immunoprecipitation](#)
- [Flow Cytometry](#)
- [Cell Culture](#)

CT054 Antibody (Center) - Images



Western blot analysis of CT054 Antibody (Center) (Cat. #AP5210c) in HepG2 cell line lysates (35ug/lane).CT054 (arrow) was detected using the purified Pab.



CT054 Antibody (Center) (Cat. #AP5210c) flow cytometric analysis of HepG2 cells (bottom histogram) compared to a negative control cell (top histogram). FITC-conjugated goat-anti-rabbit secondary antibodies were used for the analysis.

CT054 Antibody (Center) - Background

The function of this protein has not been specifically defined.

CT054 Antibody (Center) - References

Green, P., et al. Am. J. Hum. Genet. 86(3):485-489(2010)

Yamamoto, S., et al. J. Biochem. 145(4):437-443(2009)

Deloukas, P., et al. Nature 414(6866):865-871(2001)

CT054 Antibody (Center) - Citations

- [SLC52A3 expression is activated by NF-κB p65/Rel-B and serves as a prognostic biomarker in esophageal cancer.](#)