

**CU056 Antibody (C-term)**  
**Affinity Purified Rabbit Polyclonal Antibody (Pab)**  
**Catalog # AP5211b****Specification**

---

**CU056 Antibody (C-term) - Product Information**

Application	WB,E
Primary Accession	<a href="#">Q9H0A9</a>
Reactivity	Human
Host	Rabbit
Clonality	Polyclonal
Isotype	Rabbit IgG
Calculated MW	37613
Antigen Region	226-254

**CU056 Antibody (C-term) - Additional Information****Gene ID** 84221**Other Names**

Speriolin-like protein, Spermatogenesis and centriole-associated protein 1-like protein, SPATC1L, C21orf56

**Target/Specificity**

This CU056 antibody is generated from rabbits immunized with a KLH conjugated synthetic peptide between 226-254 amino acids from the C-terminal region of human CU056.

**Dilution**

WB~~1:1000

**Format**

Purified polyclonal antibody supplied in PBS with 0.09% (W/V) sodium azide. This antibody is purified through a protein A column, followed by peptide affinity purification.

**Storage**

Maintain refrigerated at 2-8°C for up to 2 weeks. For long term storage store at -20°C in small aliquots to prevent freeze-thaw cycles.

**Precautions**

CU056 Antibody (C-term) is for research use only and not for use in diagnostic or therapeutic procedures.

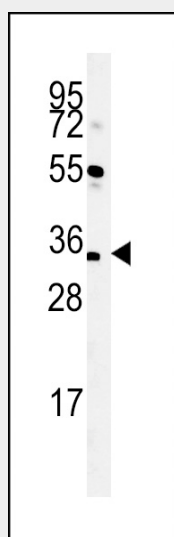
**CU056 Antibody (C-term) - Protein Information****Name** SPATC1L**Synonyms** C21orf56

## CU056 Antibody (C-term) - Protocols

Provided below are standard protocols that you may find useful for product applications.

- [Western Blot](#)
- [Blocking Peptides](#)
- [Dot Blot](#)
- [Immunohistochemistry](#)
- [Immunofluorescence](#)
- [Immunoprecipitation](#)
- [Flow Cytometry](#)
- [Cell Culture](#)

## CU056 Antibody (C-term) - Images



Western blot analysis of CU056 Antibody (C-term) (Cat. #AP5211b) in mouse liver tissue lysates (35ug/lane). CU056 (arrow) was detected using the purified Pab.

## CU056 Antibody (C-term) - Background

The function of this protein has not been specifically defined.

## CU056 Antibody (C-term) - References

Lehner, B., et al. Genome Res. 14(7):1315-1323(2004)