

Rabbit Anti-Elastin Polyclonal Antibody
Purified Rabbit Polyclonal Antibody (Pab)
Catalog # AP52134**Specification**

Rabbit Anti-Elastin Polyclonal Antibody - Product Information

Application	WB, IHC-P, FC
Primary Accession	P15502
Reactivity	Human, Mouse, Rat
Host	Rabbit
Clonality	Polyclonal

Rabbit Anti-Elastin Polyclonal Antibody - Additional Information**Gene ID** 2006**Other Names**

WS; WBS; SVAS; Elastin; Tropoelastin; ELN

Dilution

WB~1:100~1:500<br \>IHC-P~1:100~1:500<br \>FC~1:20~1:100

Format

0.01M TBS(pH7.4), 0.09% (W/V) sodium azide and 50% Glyce

Storage

Store at -20 °C for one year. Avoid repeated freeze/thaw cycles. When reconstituted in sterile pH 7.4 0.01M PBS or diluent of antibody the antibody is stable for at least two weeks at 2-4 °C.

Rabbit Anti-Elastin Polyclonal Antibody - Protein Information**Name** ELN**Function**

Major structural protein of tissues such as aorta and nuchal ligament, which must expand rapidly and recover completely. Molecular determinant of the late arterial morphogenesis, stabilizing arterial structure by regulating proliferation and organization of vascular smooth muscle (By similarity).

Cellular Location

Secreted, extracellular space, extracellular matrix. Note=Extracellular matrix of elastic fibers.

Tissue Location

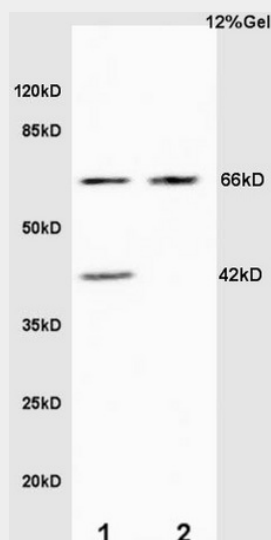
Expressed within the outer myometrial smooth muscle and throughout the arteriolar tree of uterus (at protein level). Also expressed in the large arteries, lung and skin

Rabbit Anti-Elastin Polyclonal Antibody - Protocols

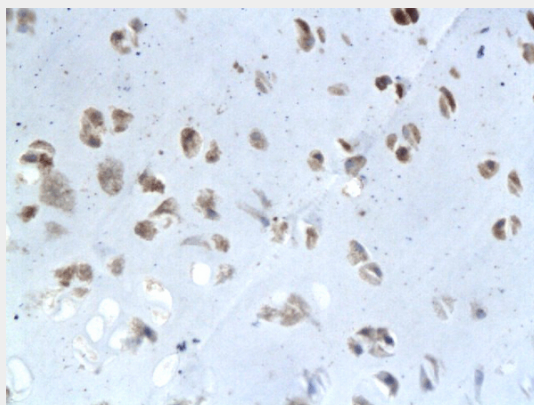
Provided below are standard protocols that you may find useful for product applications.

- [Western Blot](#)
- [Blocking Peptides](#)
- [Dot Blot](#)
- [Immunohistochemistry](#)
- [Immunofluorescence](#)
- [Immunoprecipitation](#)
- [Flow Cytometry](#)
- [Cell Culture](#)

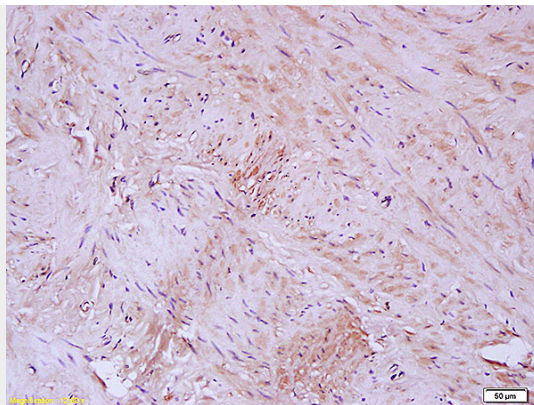
Rabbit Anti-Elastin Polyclonal Antibody - Images



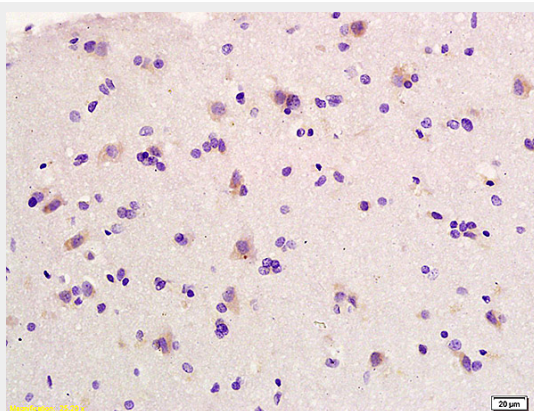
L1 mouse intestine lysates L2 rat lung lysates (30ug) probed with Anti Alpha Elastin Polyclonal Antibody, Unconjugated (AP52134) at 1:200 overnight at 4°C. Followed by conjugation to secondary antibody at 1:3000 for 90 min at 37°C. Predicted band 66kD. Observed band size: 66kD



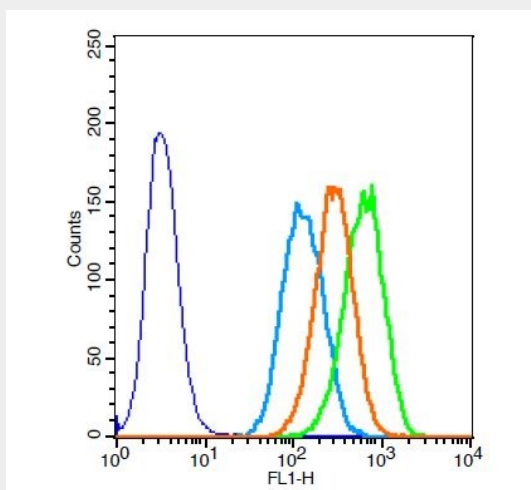
Formalin-fixed and paraffin embedded rat intervertebral disk labeled with Anti-ELASTIN, Unconjugated AP52134 followed by conjugation to the secondary antibody and DAB staining



Formalin-fixed and paraffin embedded human artery labeled with Anti-Elastin Polyclonal Antibody, Unconjugated AP52134 at 1:200 followed by conjugation to the secondary antibody and DAB staining.



Formalin-fixed and paraffin embedded human glioma labeled with Anti-Elastin Polyclonal Antibody, Unconjugated AP52134 at 1:200 followed by conjugation to the secondary antibody and DAB staining.



Human A549 cells probed with Rabbit Anti-Elastin Polyclonal Antibody (AP52134) at 1:50 for 40 minutes followed by incubation with Goat Anti-Rabbit IgG FITC conjugated secondary at 1:100 (green) for 40 minutes compared to control cells (blue), secondary only (light blue) and isotype control (orange)

Rabbit Anti-Elastin Polyclonal Antibody - Background

Major structural protein of tissues such as aorta and nuchal ligament, which must expand rapidly and recover completely. Molecular determinant of the late arterial morphogenesis, stabilizing arterial structure by regulating proliferation and organization of vascular smooth muscle (By similarity).