

**ENPP6 Antibody (Center)**  
**Affinity Purified Rabbit Polyclonal Antibody (Pab)**  
**Catalog # AP5216c****Specification**

---

**ENPP6 Antibody (Center) - Product Information**

Application	IHC-P, WB,E
Primary Accession	<a href="#">Q6UWR7</a>
Other Accession	<a href="#">B0BND0</a> , <a href="#">Q58D68</a> , <a href="#">Q8BGN3</a>
Reactivity	Human, Mouse
Predicted	Pig, Rat
Host	Rabbit
Clonality	Polyclonal
Isotype	Rabbit IgG
Calculated MW	50241
Antigen Region	170-197

**ENPP6 Antibody (Center) - Additional Information****Gene ID** 133121**Other Names**

Ectonucleotide pyrophosphatase/phosphodiesterase family member 6, E-NPP 6, NPP-6, 314-, Choline-specific glycerophosphodiester phosphodiesterase, Glycerophosphocholine cholinephosphodiesterase, GPC-Cpde, ENPP6

**Target/Specificity**

This ENPP6 antibody is generated from rabbits immunized with a KLH conjugated synthetic peptide between 170-197 amino acids from the Central region of human ENPP6.

**Dilution**

IHC-P~~1:50~100

WB~~1:1000

E~~Use at an assay dependent concentration.

**Format**

Purified polyclonal antibody supplied in PBS with 0.09% (W/V) sodium azide. This antibody is purified through a protein A column, followed by peptide affinity purification.

**Storage**

Maintain refrigerated at 2-8°C for up to 2 weeks. For long term storage store at -20°C in small aliquots to prevent freeze-thaw cycles.

**Precautions**

ENPP6 Antibody (Center) is for research use only and not for use in diagnostic or therapeutic procedures.

**ENPP6 Antibody (Center) - Protein Information**

**Name** ENPP6 ([HGNC:23409](#))

**Function** Choline-specific glycerophosphodiesterase that hydrolyzes glycerophosphocholine (GPC) and lysophosphatidylcholine (LPC) and contributes to supplying choline to the cells (PubMed:[15788404](#)). Has a preference for LPC with short (12:0 and 14:0) or polyunsaturated (18:2 and 20:4) fatty acids. In vitro, hydrolyzes only choline-containing lysophospholipids, such as sphingosylphosphorylcholine (SPC), platelet-activating factor (PAF) and lysoPAF, but not other lysophospholipids (By similarity).

**Cellular Location**

Cell membrane; Lipid-anchor, GPI-anchor. Note=A small amount of the protein may be found in the extracellular milieu

**Tissue Location**

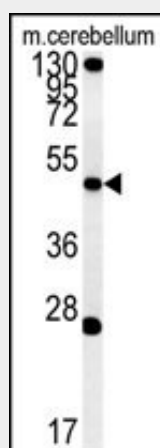
Predominantly expressed in kidney and brain. In the kidney, expressed specifically in the proximal tubules and thin descending limbs of Henle (at protein level)

**ENPP6 Antibody (Center) - Protocols**

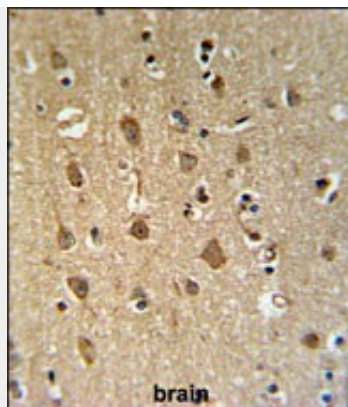
Provided below are standard protocols that you may find useful for product applications.

- [Western Blot](#)
- [Blocking Peptides](#)
- [Dot Blot](#)
- [Immunohistochemistry](#)
- [Immunofluorescence](#)
- [Immunoprecipitation](#)
- [Flow Cytometry](#)
- [Cell Culture](#)

**ENPP6 Antibody (Center) - Images**



Western blot analysis of ENPP6 Antibody (Center) (Cat. #AP5216c) in mouse cerebellum tissue lysates (35ug/lane). ENPP6 (arrow) was detected using the purified Pab.



ENPP6 Antibody (Center) (Cat. #AP5216c) IHC analysis in formalin fixed and paraffin embedded human brain tissue followed by peroxidase conjugation of the secondary antibody and DAB staining. This data demonstrates the use of the ENPP6 Antibody (Center) for immunohistochemistry. Clinical relevance has not been evaluated.

#### **ENPP6 Antibody (Center) - Background**

ENPP6 is choline-specific glycerophosphodiester phosphodiesterase. This protein hydrolyzes the classical substrate for phospholipase C, p-nitrophenyl phosphorylcholine, while it does not hydrolyze the classical nucleotide phosphodiesterase substrate, p-nitrophenyl thymidine 5'-monophosphate.

#### **ENPP6 Antibody (Center) - References**

Sakagami, H., et al. J. Biol. Chem. 280(24):23084-23093(2005)  
Clark, H.F., et al. Genome Res. 13(10):2265-2270(2003)