

Rabbit Anti-CD68 Polyclonal Antibody
Purified Rabbit Polyclonal Antibody (Pab)
Catalog # AP52189**Specification**

Rabbit Anti-CD68 Polyclonal Antibody - Product Information

Application	IF, WB, IHC-P
Primary Accession	P31996
Reactivity	Mouse, Rat
Host	Rabbit
Clonality	Polyclonal

Rabbit Anti-CD68 Polyclonal Antibody - Additional Information**Gene ID** 12514**Other Names**

Lamp4; gp11; Scard1; Macrosialin; CD68

Dilution

IF~~1:100~1:200<br \>WB~~1:100~1:500<br \>IHC-P~~1:100~1:500

Format

0.01M TBS(pH7.4), 0.09% (W/V) sodium azide and 50% Glyce

Storage

Store at -20 °C for one year. Avoid repeated freeze/thaw cycles. When reconstituted in sterile pH 7.4 0.01M PBS or diluent of antibody the antibody is stable for at least two weeks at 2-4 °C.

Rabbit Anti-CD68 Polyclonal Antibody - Protein Information**Name** Cd68**Function**

Could play a role in phagocytic activities of tissue macrophages, both in intracellular lysosomal metabolism and extracellular cell-cell and cell-pathogen interactions. Binds to tissue- and organ-specific lectins or selectins, allowing homing of macrophage subsets to particular sites. Rapid recirculation of CD68 from endosomes and lysosomes to the plasma membrane may allow macrophages to crawl over selectin-bearing substrates or other cells.

Cellular Location

[Isoform Long]: Endosome membrane; Single-pass type I membrane protein. Lysosome membrane; Single-pass type I membrane protein

Tissue Location

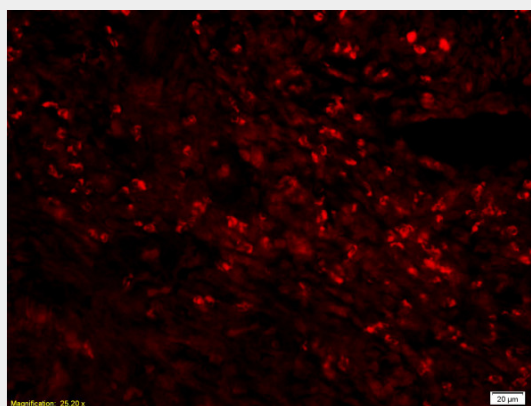
Expressed in tissue macrophages and to a lesser extent in dendritic cells

Rabbit Anti-CD68 Polyclonal Antibody - Protocols

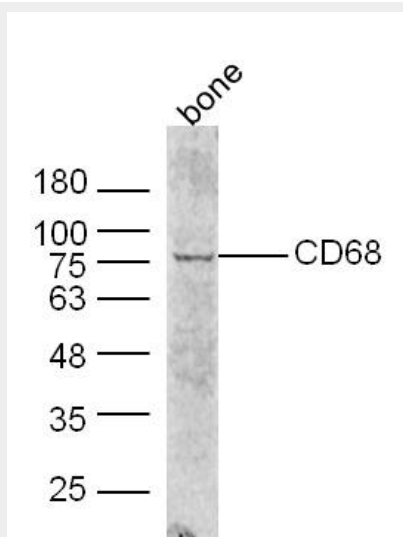
Provided below are standard protocols that you may find useful for product applications.

- [Western Blot](#)
- [Blocking Peptides](#)
- [Dot Blot](#)
- [Immunohistochemistry](#)
- [Immunofluorescence](#)
- [Immunoprecipitation](#)
- [Flow Cytometry](#)
- [Cell Culture](#)

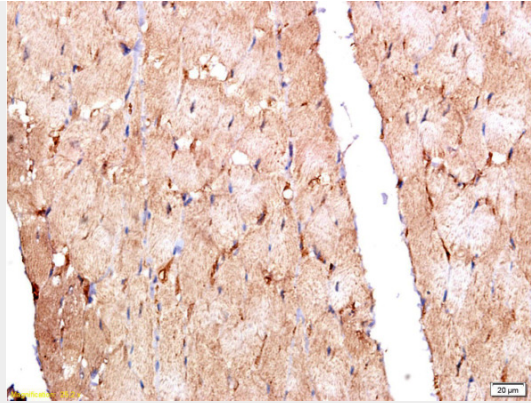
Rabbit Anti-CD68 Polyclonal Antibody - Images



Formalin-fixed and rat colitis tissue labeled with Anti-CD68 Polyclonal Antibody, Unconjugated AP52189 at 1:200 followed by conjugation to the secondary antibody, Goat Anti-Rabbit IgG, Cy5 conjugated,



Western blot analysis of extracts from Bone tissue(mouse) using CD68 Antibody.



Formalin-fixed and paraffin embedded rat myocardium labeled with Anti-CD68 Polyclonal Antibody, Unconjugated (AP52189) at 1:200 followed by conjugation to the secondary antibody and DAB staining.

Rabbit Anti-CD68 Polyclonal Antibody - Background

Could play a role in phagocytic activities of tissue macrophages, both in intracellular lysosomal metabolism and extracellular cell-cell and cell-pathogen interactions. Binds to tissue- and organ-specific lectins or selectins, allowing homing of macrophage subsets to particular sites. Rapid recirculation of CD68 from endosomes and lysosomes to the plasma membrane may allow macrophages to crawl over selectin-bearing substrates or other cells.

Rabbit Anti-CD68 Polyclonal Antibody - Citations

- [Glucocalyxin A improves survival in bleomycin-induced pulmonary fibrosis in mice.](#)