

FBXL14 Antibody (C-term)
Affinity Purified Rabbit Polyclonal Antibody (Pab)
Catalog # AP5220b

Specification

FBXL14 Antibody (C-term) - Product Information

Application	WB, FC,E
Primary Accession	Q8N1E6
Reactivity	Human
Host	Rabbit
Clonality	Polyclonal
Isotype	Rabbit IgG
Antigen Region	379-407

FBXL14 Antibody (C-term) - Additional Information

Gene ID 144699

Other Names

F-box/LRR-repeat protein 14, F-box and leucine-rich repeat protein 14, FBXL14, FBL14

Target/Specificity

This FBXL14 antibody is generated from rabbits immunized with a KLH conjugated synthetic peptide between 379-407 amino acids from the C-terminal region of human FBXL14.

Dilution

WB~~1:1000

FC~~1:10~50

Format

Purified polyclonal antibody supplied in PBS with 0.09% (W/V) sodium azide. This antibody is purified through a protein A column, followed by peptide affinity purification.

Storage

Maintain refrigerated at 2-8°C for up to 2 weeks. For long term storage store at -20°C in small aliquots to prevent freeze-thaw cycles.

Precautions

FBXL14 Antibody (C-term) is for research use only and not for use in diagnostic or therapeutic procedures.

FBXL14 Antibody (C-term) - Protein Information

Name FBXL14

Synonyms FBL14

Function Substrate-recognition component of some SCF (SKP1-CUL1-F-box protein)-type E3

ubiquitin-protein ligase complexes. The SCF(FBXL14) complex acts by mediating ubiquitination and subsequent degradation of SNAI1.

Cellular Location

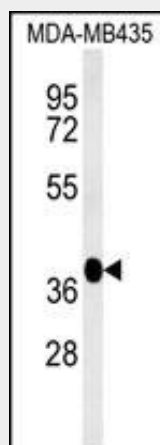
Cytoplasm.

FBXL14 Antibody (C-term) - Protocols

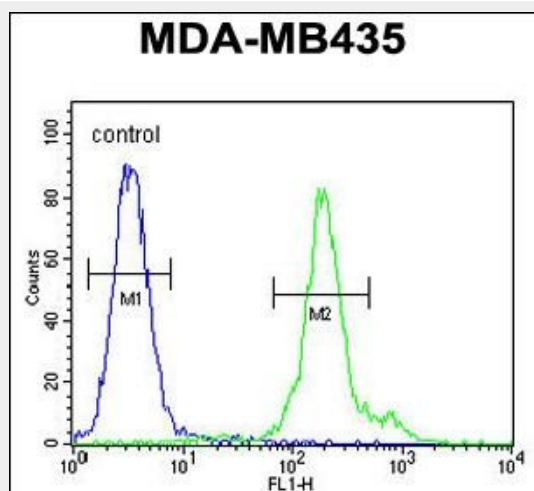
Provided below are standard protocols that you may find useful for product applications.

- [Western Blot](#)
- [Blocking Peptides](#)
- [Dot Blot](#)
- [Immunohistochemistry](#)
- [Immunofluorescence](#)
- [Immunoprecipitation](#)
- [Flow Cytometry](#)
- [Cell Culture](#)

FBXL14 Antibody (C-term) - Images



FBXL14 Antibody (C-term) Cat. #AP5220b western blot analysis in MDA-MB435 cell line lysates (35ug/lane). This demonstrates the FBXL14 antibody detected the FBXL14 protein (arrow).



FBXL14 Antibody (C-term) (Cat. #AP5220b) flow cytometric analysis of MDA-MB435 cells (right histogram) compared to a negative control cell (left histogram). FITC-conjugated goat-anti-rabbit secondary antibodies were used for the analysis.

FBXL14 Antibody (C-term) - Background

FBXL14 is members of the F-box protein family, such as FBXL14, are characterized by an approximately 40-amino acid F-box motif. SCF complexes, formed by SKP1 (MIM 601434), cullin (see CUL1; MIM 603134), and F-box proteins, act as protein-ubiquitin ligases. F-box proteins interact with SKP1 through the F box, and they interact with ubiquitination targets through other protein interaction domains.

FBXL14 Antibody (C-term) - References

Vinas-Castells, R., et al. J. Biol. Chem. 285(6):3794-3805(2010)
Jin, J., et al. Genes Dev. 18(21):2573-2580(2004)