

Rabbit Anti-BAMBI Polyclonal Antibody
Purified Rabbit Polyclonal Antibody (Pab)
Catalog # AP52256**Specification**

Rabbit Anti-BAMBI Polyclonal Antibody - Product Information

Application	WB, FC
Primary Accession	Q13145
Reactivity	Human, Mouse, Rat, Pig
Host	Rabbit
Clonality	Polyclonal
Antigen Region	101-200/260aa

Rabbit Anti-BAMBI Polyclonal Antibody - Additional Information**Gene ID** 25805**Other Names**NMA; BMP and activin membrane-bound inhibitor homolog; Non-metastatic gene A protein;
Putative transmembrane protein NMA; BAMBI**Dilution**WB~~1:100~1:500<br \><span class
="dilution_FC">FC~~1:20~1:100**Format**

0.01M TBS(pH7.4), 0.09% (W/V) sodium azide and 50% Glyce

StorageStore at -20 °C for one year. Avoid repeated freeze/thaw cycles. When reconstituted in sterile pH
7.4 0.01M PBS or diluent of antibody the antibody is stable for at least two weeks at 2-4 °C.**Rabbit Anti-BAMBI Polyclonal Antibody - Protein Information****Name** BAMBI**Synonyms** NMA**Function**

Negatively regulates TGF-beta signaling.

Cellular Location

Membrane; Single-pass type I membrane protein

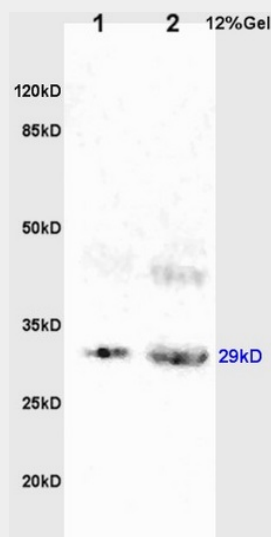
Tissue LocationHigh expression in kidney medulla, placenta and spleen; low in kidney cortex, liver, prostate and
gut. Not expressed in normal skin, expression is high in melanocytes and in 3 out of 11 melanoma
metastases tested

Rabbit Anti-BAMBI Polyclonal Antibody - Protocols

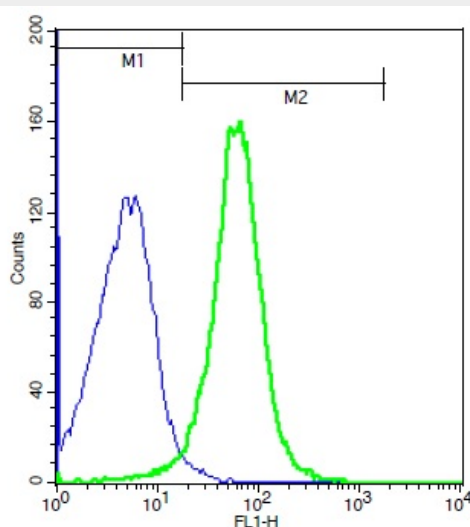
Provided below are standard protocols that you may find useful for product applications.

- [Western Blot](#)
- [Blocking Peptides](#)
- [Dot Blot](#)
- [Immunohistochemistry](#)
- [Immunofluorescence](#)
- [Immunoprecipitation](#)
- [Flow Cytometry](#)
- [Cell Culture](#)

Rabbit Anti-BAMBI Polyclonal Antibody - Images



L1 rat brain lysates L2 rat kidney lysates probed with Anti BAMBI Polyclonal Antibody, Unconjugated (AP52256) at 1:200 overnight at 4°C. Followed by conjugation to secondary antibody at 1:3000 for 90 min at 37°C. Predicted band 29kD. Observed band size:29kD.



Mouse splenocytes probed with Rabbit Anti-BAMBI Polyclonal Antibody, Unconjugated (AP52256)

(green) at 1:100 for 40 minutes followed by a FITC conjugated secondary compared to control cells (blue).

Rabbit Anti-BAMBI Polyclonal Antibody - Background

BAMBI is a membrane spanning glycoprotein that acts as a negative regulator of TGF-beta signaling during development. The BAMBI family of proteins are related to type I TGF-beta receptor family, however, BAMBI is a pseudoreceptor that lacks an intracellular serine/threonine kinase domain. BAMBI transcription regulation is under the influence of beta-catenin, BMP, smad3 and smad4. BAMBI expression can increase in colorectal and hepatocellular carcinomas relative to non-cancerous tissues. BAMBI is expressed at high levels during odontogenesis. BAMBI is coexpressed with Bmp-4 during early *Xenopus* embryogenesis and can be detected in poorly metastatic human melanoma cell lines.