

Rabbit Anti-E2F5 Polyclonal Antibody
Purified Rabbit Polyclonal Antibody (Pab)
Catalog # AP52267**Specification**

Rabbit Anti-E2F5 Polyclonal Antibody - Product Information

Application	IHC-P, FC
Primary Accession	Q15329
Reactivity	Human, Mouse, Rat
Host	Rabbit
Clonality	Polyclonal
Antigen Region	human E2F5:101-200/346

Rabbit Anti-E2F5 Polyclonal Antibody - Additional Information**Gene ID** 1875**Other Names**

E2F-5; Transcription factor E2F5; E2F5

Dilution

IHC-P~1:100~1:500
FC~1:20~1:100

Format

0.01M TBS(pH7.4), 0.09% (W/V) sodium azide and 50% Glyce

Storage

Store at -20 °C for one year. Avoid repeated freeze/thaw cycles. When reconstituted in sterile pH 7.4 0.01M PBS or diluent of antibody the antibody is stable for at least two weeks at 2-4 °C.

Rabbit Anti-E2F5 Polyclonal Antibody - Protein Information**Name** E2F5**Function**

Transcriptional activator that binds to E2F sites, these sites are present in the promoter of many genes whose products are involved in cell proliferation. May mediate growth factor-initiated signal transduction. It is likely involved in the early responses of resting cells to growth factor stimulation. Specifically required for multiciliate cell differentiation: together with MCIDAS and E2F5, binds and activate genes required for centriole biogenesis.

Cellular Location

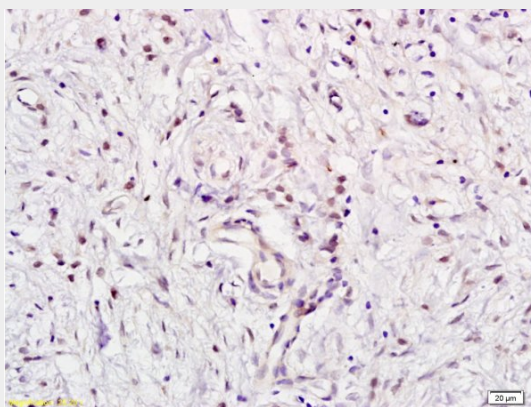
Nucleus.

Rabbit Anti-E2F5 Polyclonal Antibody - Protocols

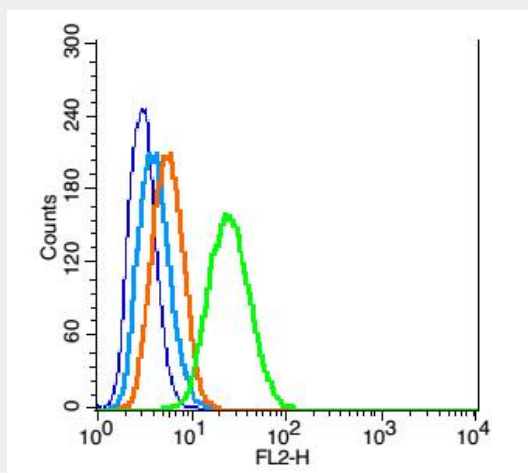
Provided below are standard protocols that you may find useful for product applications.

- [Western Blot](#)
- [Blocking Peptides](#)
- [Dot Blot](#)
- [Immunohistochemistry](#)
- [Immunofluorescence](#)
- [Immunoprecipitation](#)
- [Flow Cytometry](#)
- [Cell Culture](#)

Rabbit Anti-E2F5 Polyclonal Antibody - Images



Formalin-fixed and paraffin embedded human gastric carcinoma labeled with Anti E2F5 Polyclonal Antibody, Unconjugated (AP52267) at 1:200 followed by conjugation to the secondary antibody and DAB staining



RSC96 cells probed with E2F5 Polyclonal Antibody, Unconjugated (AP52267) at 1:100 for 30 minutes followed by incubation with a conjugated secondary (PE Conjugated) (green) for 30 minutes compared to control cells (blue), secondary only (light blue) and isotype control (orange).

Rabbit Anti-E2F5 Polyclonal Antibody - Background

Transcriptional activator that binds to E2F sites, these sites are present in the promoter of many genes whose products are involved in cell proliferation. May mediate growth factor-initiated signal transduction. It is likely involved in the early responses of resting cells to growth factor stimulation. Specifically required for multiciliate cell differentiation: together with MCIDAS and E2F5, binds and activate genes required for centriole biogenesis.