

Rabbit Anti-Occludin Polyclonal Antibody
Purified Rabbit Polyclonal Antibody (Pab)
Catalog # AP52279**Specification**

Rabbit Anti-Occludin Polyclonal Antibody - Product Information

Application	WB, IHC-P
Primary Accession	Q61146
Reactivity	Human, Mouse, Rat, Pig
Host	Rabbit
Clonality	Polyclonal

Rabbit Anti-Occludin Polyclonal Antibody - Additional Information**Gene ID** 18260**Other Names**

Ocl; AI53564; Occludin; Ocln

Dilution

WB~~1:100~1:500<br \>IHC-P~~1:100~1:500

Format

0.01M TBS(pH7.4), 0.09% (W/V) sodium azide and 50% Glyce

Storage

Store at -20 °C for one year. Avoid repeated freeze/thaw cycles. When reconstituted in sterile pH 7.4 0.01M PBS or diluent of antibody the antibody is stable for at least two weeks at 2-4 °C.

Rabbit Anti-Occludin Polyclonal Antibody - Protein Information**Name** Ocln**Synonyms** Ocl**Function**

May play a role in the formation and regulation of the tight junction (TJ) paracellular permeability barrier.

Cellular Location

Cell membrane; Multi-pass membrane protein. Cell junction, tight junction

Tissue Location

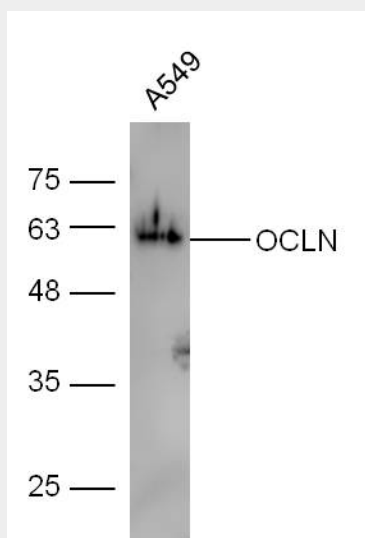
Localized at tight junctions of both epithelial and endothelial cells. Highly expressed in the testis, kidney, lung, liver and brain. Not detected in skeletal muscle, spleen and heart

Rabbit Anti-Occludin Polyclonal Antibody - Protocols

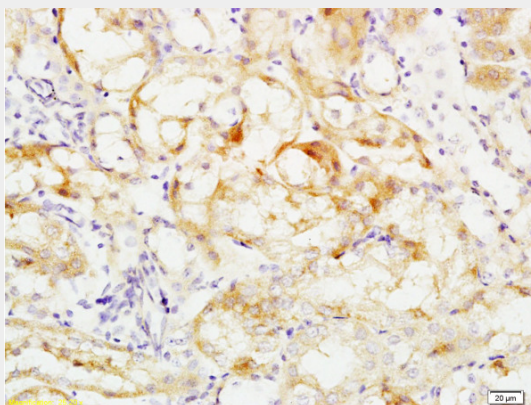
Provided below are standard protocols that you may find useful for product applications.

- [Western Blot](#)
- [Blocking Peptides](#)
- [Dot Blot](#)
- [Immunohistochemistry](#)
- [Immunofluorescence](#)
- [Immunoprecipitation](#)
- [Flow Cytometry](#)
- [Cell Culture](#)

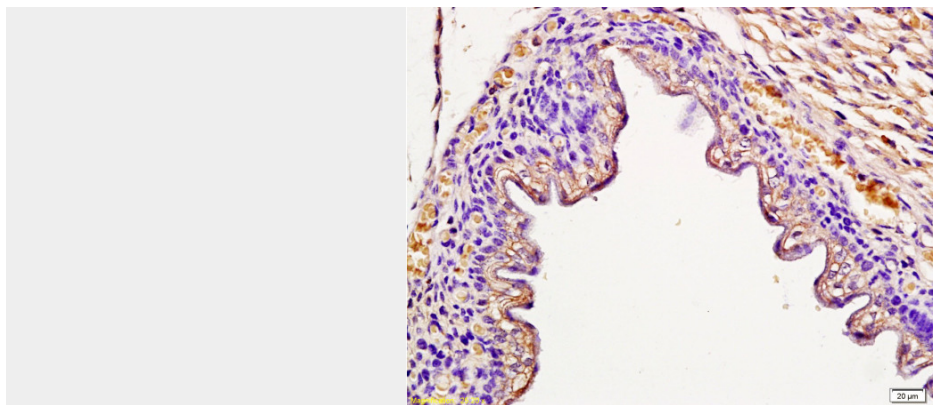
Rabbit Anti-Occludin Polyclonal Antibody - Images



Human A549 lysates probed with Rabbit Anti-Occludin Polyclonal Antibody, Unconjugated AP52279 at 1:300 overnight at 4°C. Followed by a conjugated secondary antibody at 1:5000 for 90 min at 37°C.



Formalin-fixed and mouse kidney tissue labeled with Anti-Occludin Polyclonal Antibody, Unconjugated (AP52279) at 1:200 followed by conjugation to the secondary antibody and DAB staining



Formalin-fixed and paraffin embedded mouse embryo tissue labeled with Anti-Occludin Polyclonal Antibody, Unconjugated (AP52279) at 1:100 followed by conjugation to the secondary antibody and DAB staining

Rabbit Anti-Occludin Polyclonal Antibody - Background

May play a role in the formation and regulation of the tight junction (TJ) paracellular permeability barrier.