

GMNN Antibody (Center Y111)
Affinity Purified Rabbit Polyclonal Antibody (Pab)
Catalog # AP5227c**Specification**

GMNN Antibody (Center Y111) - Product Information

Application	IHC-P, WB,E
Primary Accession	O75496
Other Accession	O88513
Reactivity	Human
Predicted	Mouse
Host	Rabbit
Clonality	Polyclonal
Isotype	Rabbit IgG
Calculated MW	23565
Antigen Region	96-123

GMNN Antibody (Center Y111) - Additional Information**Gene ID** 51053**Other Names**

Geminin, GMNN

Target/Specificity

This GMNN antibody is generated from rabbits immunized with a KLH conjugated synthetic peptide between 96-123 amino acids from the Central region of human GMNN.

Dilution

IHC-P~~1:50~100

WB~~1:1000

E~~Use at an assay dependent concentration.

Format

Purified polyclonal antibody supplied in PBS with 0.09% (W/V) sodium azide. This antibody is purified through a protein A column, followed by peptide affinity purification.

Storage

Maintain refrigerated at 2-8°C for up to 2 weeks. For long term storage store at -20°C in small aliquots to prevent freeze-thaw cycles.

Precautions

GMNN Antibody (Center Y111) is for research use only and not for use in diagnostic or therapeutic procedures.

GMNN Antibody (Center Y111) - Protein Information**Name** GMNN

Function Inhibits DNA replication by preventing the incorporation of MCM complex into pre-replication complex (pre-RC) (PubMed:[14993212](#), PubMed:[20129055](#), PubMed:[24064211](#), PubMed:[9635433](#)). It is degraded during the mitotic phase of the cell cycle (PubMed:[14993212](#), PubMed:[24064211](#), PubMed:[9635433](#)). Its destruction at the metaphase- anaphase transition permits replication in the succeeding cell cycle (PubMed:[14993212](#), PubMed:[24064211](#), PubMed:[9635433](#)). Inhibits histone acetyltransferase activity of KAT7/HBO1 in a CDT1-dependent manner, inhibiting histone H4 acetylation and DNA replication licensing (PubMed:[20129055](#)). Inhibits the transcriptional activity of a subset of Hox proteins, enrolling them in cell proliferative control (PubMed:[22615398](#)).

Cellular Location

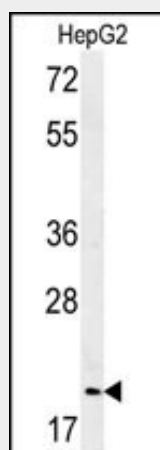
Cytoplasm. Nucleus. Note=Mainly cytoplasmic but can be relocalized to the nucleus.

GMNN Antibody (Center Y111) - Protocols

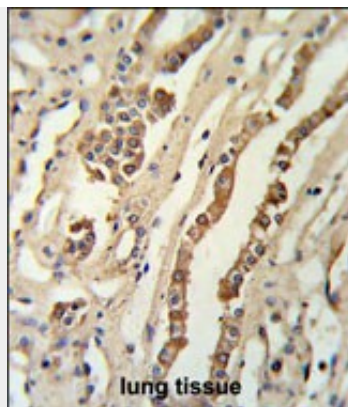
Provided below are standard protocols that you may find useful for product applications.

- [Western Blot](#)
- [Blocking Peptides](#)
- [Dot Blot](#)
- [Immunohistochemistry](#)
- [Immunofluorescence](#)
- [Immunoprecipitation](#)
- [Flow Cytometry](#)
- [Cell Culture](#)

GMNN Antibody (Center Y111) - Images



Western blot analysis of GMNN Antibody (Center Y111) (Cat. #AP5227c) in HepG2 cell line lysates (35ug/lane).GMNN (arrow) was detected using the purified Pab.



GMNN Antibody (Center Y111) (Cat. #AP5227c) IHC analysis in formalin fixed and paraffin embedded lung tissue followed by peroxidase conjugation of the secondary antibody and DAB staining. This data demonstrates the use of the GMNN Antibody (Center Y111) for immunohistochemistry. Clinical relevance has not been evaluated.

GMNN Antibody (Center Y111) - Background

GMNN inhibits DNA replication by preventing the incorporation of MCM complex into prereplication complex (pre-RC). It is degraded during the mitotic phase of the cell cycle. Its destruction at the metaphase-anaphase transition permits replication in the succeeding cell cycle.

GMNN Antibody (Center Y111) - References

De Marco, V., et al. Proc. Natl. Acad. Sci. U.S.A. 106(47):19807-19812(2009)
Zhu, W., et al. Cancer Res. 69(11):4870-4877(2009)
Lu, F., et al. Biol. Cell 101(5):273-285(2009)