

Rabbit Anti-CD34 Polyclonal Antibody
Purified Rabbit Polyclonal Antibody (Pab)
Catalog # AP52283**Specification**

Rabbit Anti-CD34 Polyclonal Antibody - Product Information

Application	IF, WB, IHC-P
Primary Accession	Q64314
Reactivity	Human, Mouse, Rat
Host	Rabbit
Clonality	Polyclonal

Rabbit Anti-CD34 Polyclonal Antibody - Additional Information**Gene ID** 12490**Other Names**

AU496; Hematopoietic progenitor cell antigen CD34; CD34

Dilution

IF~~1:100~1:200<br \>WB~~1:100~1:500<br \>IHC-P~~1:100~1:500

Format

0.01M TBS(pH7.4), 0.09% (W/V) sodium azide and 50% Glyce

Storage

Store at -20 °C for one year. Avoid repeated freeze/thaw cycles. When reconstituted in sterile pH 7.4 0.01M PBS or diluent of antibody the antibody is stable for at least two weeks at 2-4 °C.

Rabbit Anti-CD34 Polyclonal Antibody - Protein Information**Name** Cd34**Function**

Possible adhesion molecule with a role in early hematopoiesis by mediating the attachment of stem cells to the bone marrow extracellular matrix or directly to stromal cells. Could act as a scaffold for the attachment of lineage specific glycans, allowing stem cells to bind to lectins expressed by stromal cells or other marrow components. Presents carbohydrate ligands to selectins (By similarity).

Cellular Location

Membrane; Single-pass type I membrane protein.

Tissue Location

Expressed in the kidney where it is detected in the thin limb of Henle's loop (at protein level) (PubMed:31605441). Highly expressed in hematopoietic progenitor cell lines, brain and testis, and

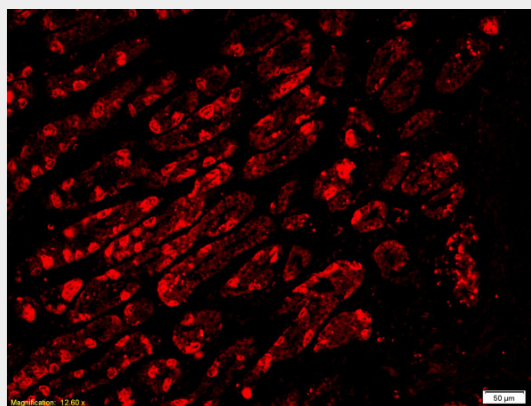
moderately in the thymus, spleen, and bone marrow, but not in adult liver (PubMed:1709048).

Rabbit Anti-CD34 Polyclonal Antibody - Protocols

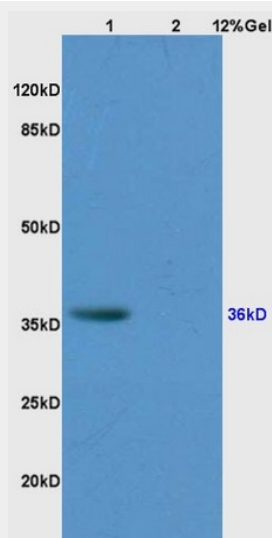
Provided below are standard protocols that you may find useful for product applications.

- [Western Blot](#)
- [Blocking Peptides](#)
- [Dot Blot](#)
- [Immunohistochemistry](#)
- [Immunofluorescence](#)
- [Immunoprecipitation](#)
- [Flow Cytometry](#)
- [Cell Culture](#)

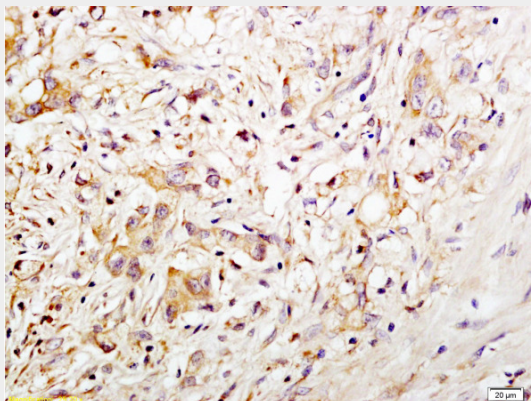
Rabbit Anti-CD34 Polyclonal Antibody - Images



Formalin-fixed and paraffin embedded human gastric adenocarcinoma tissue labeled with Anti-CD34 Polyclonal Antibody, Unconjugated AP52283 at 1:200 followed by conjugation to the secondary antibody, Goat Anti-Rabbit IgG, Cy3 conjugated, and DAPI staining



Lane 1: human colon carcinoma Lane 2: rat kidney lysates probed with Anti CD34 Polyclonal Antibody, Unconjugated (AP52283) at 1:200 in 4°C. Followed by conjugation to secondary antibody at 1:3000 90min in 37°C. Predicted band 39kD. Observed band size: 39kD.



Formalin-fixed and paraffin embedded human gastric carcinoma tissue labeled with Anti-CD34 Polyclonal Antibody, Unconjugated(AP52283) at 1:200 followed by conjugation to the secondary antibody and DAB staining

Rabbit Anti-CD34 Polyclonal Antibody - Background

Possible adhesion molecule with a role in early hematopoiesis by mediating the attachment of stem cells to the bone marrow extracellular matrix or directly to stromal cells. Could act as a scaffold for the attachment of lineage specific glycans, allowing stem cells to bind to lectins expressed by stromal cells or other marrow components. Presents carbohydrate ligands to selectins (By similarity).

Rabbit Anti-CD34 Polyclonal Antibody - Citations

- [MicroRNA let-7c-5p promotes osteogenic differentiation of dental pulp stem cells by inhibiting lipopolysaccharide-induced inflammation via HMGA2/PI3K/Akt signal blockade.](#)