

Rabbit Anti-IL-17RB Polyclonal Antibody
Purified Rabbit Polyclonal Antibody (Pab)
Catalog # AP52329**Specification****Rabbit Anti-IL-17RB Polyclonal Antibody - Product Information**

Application	WB, E
Primary Accession	Q9NRM6
Reactivity	Human, Mouse, Rat
Host	Rabbit
Clonality	Polyclonal
Calculated MW	54 KDa
Physical State	Liquid
Immunogen	KLH conjugated synthetic peptide derived from human IL-17RB
Epitope Specificity	221-320/502
Isotype	IgG
Purity	
affinity purified by Protein A	
Buffer	0.01M TBS (pH7.4) with 1% BSA, 0.02% Proclin300 and 50% Glycerol.
SUBCELLULAR LOCATION	Isoform 1: Cell membrane; Single-pass type I membrane protein. Isoform 2: Secreted.
SIMILARITY	Contains 1 SEFIR domain.
SUBUNIT	Interacts with DAZAP2.
Important Note	This product as supplied is intended for research use only, not for use in human, therapeutic or diagnostic applications.

Background Descriptions

The protein encoded by this gene is a cytokine receptor. This receptor specifically binds to IL17B and IL17E, but does not bind to IL17 and IL17C. This receptor has been shown to mediate the activation of NF-kappaB and the production of IL8 induced by IL17E. The expression of the rat counterpart of this gene was found to be significantly up-regulated during intestinal inflammation, which suggested the immunoregulatory activity of this receptor. [provided by RefSeq].

Rabbit Anti-IL-17RB Polyclonal Antibody - Additional Information**Gene ID** 55540**Other Names**

CRL4; EVI27; IL17BR; IL17RH1; Interleukin-17 receptor B; IL-17 receptor B; IL-17RB; Cytokine receptor-like 4; IL-17 receptor homolog 1; IL-17Rh1; Interleukin-17B receptor; IL-17B receptor; IL17RB; UNQ251/PRO19612

Target/Specificity

Expressed in several endocrine tissues, mostly in fetal and adult liver, kidney, pancreas, testis, colon, brain and small intestine; not detected in peripheral blood leukocytes, lymphoid organs, and

most cell lines.

Dilution

WB~~1:100~1:500<br \>E~~N/A

Format

0.01M TBS(pH7.4), 0.09% (W/V) sodium azide and 50% Glyce

Storage

Store at -20 °C for one year. Avoid repeated freeze/thaw cycles. When reconstituted in sterile pH 7.4 0.01M PBS or diluent of antibody the antibody is stable for at least two weeks at 2-4 °C.

Rabbit Anti-IL-17RB Polyclonal Antibody - Protein Information

Name IL17RB

Synonyms CRL4, EVI27, IL17BR

Function

Receptor for the pro-inflammatory cytokines IL17B and IL17E. May play a role in controlling the growth and/or differentiation of hematopoietic cells.

Cellular Location

[Isoform 1]: Cell membrane; Single-pass type I membrane protein

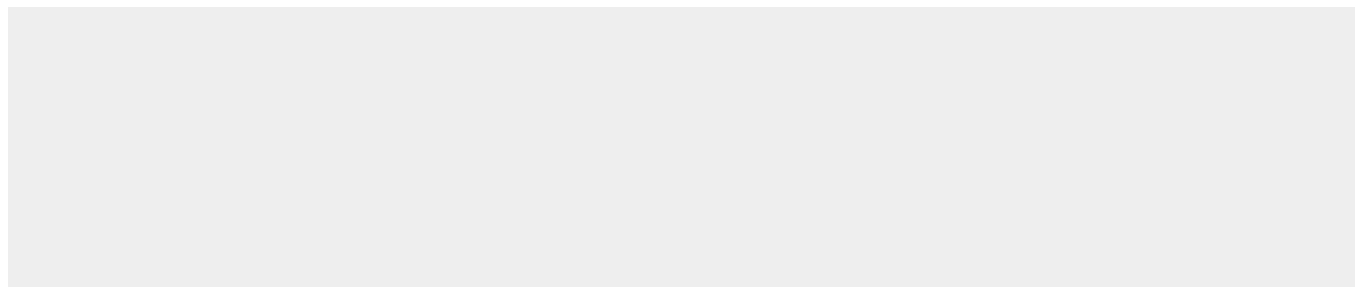
Tissue Location

Expressed in several endocrine tissues, mostly in fetal and adult liver, kidney, pancreas, testis, colon, brain and small intestine; not detected in peripheral blood leukocytes, lymphoid organs, and most cell lines

Rabbit Anti-IL-17RB Polyclonal Antibody - Protocols

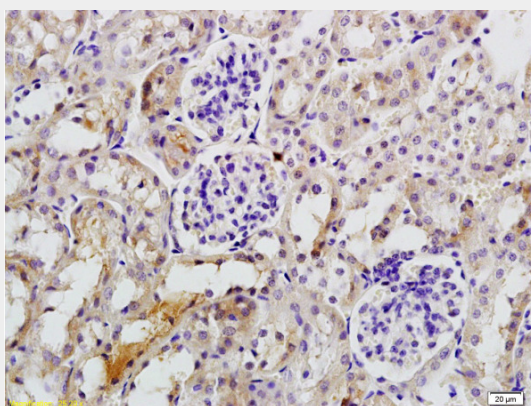
Provided below are standard protocols that you may find useful for product applications.

- [Western Blot](#)
- [Blocking Peptides](#)
- [Dot Blot](#)
- [Immunohistochemistry](#)
- [Immunofluorescence](#)
- [Immunoprecipitation](#)
- [Flow Cytometry](#)
- [Cell Culture](#)

Rabbit Anti-IL-17RB Polyclonal Antibody - Images



L1 rat kidney lysates and L2 rat brain lysates lysates probed with Anti- IL-17RB Polyclonal Antibody, Unconjugated (AP52329) at 1:200 in 4°C. Followed by conjugation to secondary antibody at 1:3000 90min in 37°C. Predicted band: 33kD/55kD Observed band size: 35kD



Antigen: 0.2ug/100ul Primary: Antiserum, 1:500, 1:1000, 1:2000, 1:4000, 1:8000, 1:16000, 1:32000; Secondary: HRP conjugated Goat-Anti-Rabbit IgG at 1: 5000; TMB staining; Read the data in MicroplateReader by 450

Rabbit Anti-IL-17RB Polyclonal Antibody - Background

Receptor for the proinflammatory cytokines IL17B and IL17E. May play a role in controlling the growth and/or differentiation of hematopoietic cells.