

**HOXC6 Antibody (C-term)**  
**Affinity Purified Rabbit Polyclonal Antibody (Pab)**  
**Catalog # AP5232b****Specification**

---

**HOXC6 Antibody (C-term) - Product Information**

Application	WB, FC,E
Primary Accession	<a href="#">P09630</a>
Other Accession	<a href="#">P10629</a> , <a href="#">P49925</a>
Reactivity	Human
Predicted	Mouse, Sheep
Host	Rabbit
Clonality	Polyclonal
Isotype	Rabbit IgG
Calculated MW	26915
Antigen Region	200-227

**HOXC6 Antibody (C-term) - Additional Information****Gene ID** 3223**Other Names**

Homeobox protein Hox-C6, Homeobox protein CP25, Homeobox protein HHOC8, Homeobox protein Hox-3C, HOXC6, HOX3C

**Target/Specificity**

This HOXC6 antibody is generated from rabbits immunized with a KLH conjugated synthetic peptide between 200-227 amino acids from the C-terminal region of human HOXC6.

**Dilution**

WB~~1:1000

FC~~1:10~50

E~~Use at an assay dependent concentration.

**Format**

Purified polyclonal antibody supplied in PBS with 0.09% (W/V) sodium azide. This antibody is purified through a protein A column, followed by peptide affinity purification.

**Storage**

Maintain refrigerated at 2-8°C for up to 2 weeks. For long term storage store at -20°C in small aliquots to prevent freeze-thaw cycles.

**Precautions**

HOXC6 Antibody (C-term) is for research use only and not for use in diagnostic or therapeutic procedures.

**HOXC6 Antibody (C-term) - Protein Information**

**Name** HOXC6

**Synonyms** HOX3C

**Function** Sequence-specific transcription factor which is part of a developmental regulatory system that provides cells with specific positional identities on the anterior-posterior axis.

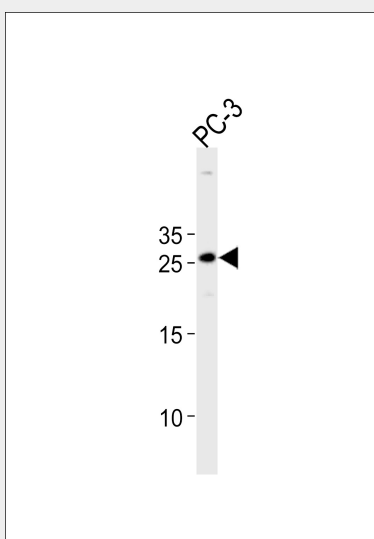
**Cellular Location**  
Nucleus.

### HOXC6 Antibody (C-term) - Protocols

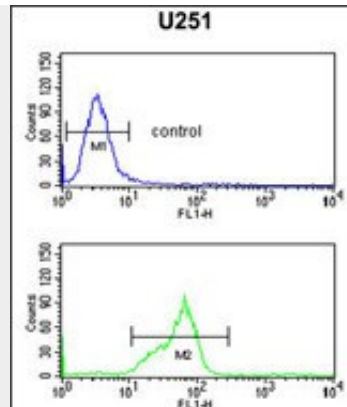
Provided below are standard protocols that you may find useful for product applications.

- [Western Blot](#)
- [Blocking Peptides](#)
- [Dot Blot](#)
- [Immunohistochemistry](#)
- [Immunofluorescence](#)
- [Immunoprecipitation](#)
- [Flow Cytometry](#)
- [Cell Culture](#)

### HOXC6 Antibody (C-term) - Images



HOXC6 Antibody (C-term) (Cat. #AP5232b) western blot analysis in PC-3 cell line lysates (35ug/lane). This demonstrates the HOXC6 antibody detected the HOXC6 protein (arrow).



HOXC6 Antibody (C-term) (Cat. #AP5232b) flow cytometric analysis of U251 cells (bottom histogram) compared to a negative control cell (top histogram). FITC-conjugated goat-anti-rabbit secondary antibodies were used for the analysis.

### **HOXC6 Antibody (C-term) - Background**

This protein belongs to the homeobox family, members of which encode a highly conserved family of transcription factors that play an important role in morphogenesis in all multicellular organisms. Mammals possess four similar homeobox gene clusters, HOXA, HOXB, HOXC and HOXD, which are located on different chromosomes and consist of 9 to 11 genes arranged in tandem. This gene, HOXC6, is one of several HOXC genes located in a cluster on chromosome 12. Three genes, HOXC5, HOXC4 and HOXC6, share a 5' non-coding exon.

### **HOXC6 Antibody (C-term) - References**

Zhang, X., et al. J. Cell. Mol. Med. 11(2):299-306(2007)  
Hori, Y., et al. PLoS Med. 2 (4), E103 (2005)  
Ramachandran, S., et al. Oncogene 24(1):188-198(2005)