

IL1F6 Antibody (Center)
Affinity Purified Rabbit Polyclonal Antibody (Pab)
Catalog # AP5234c**Specification**

IL1F6 Antibody (Center) - Product Information

Application	FC, IHC-P, WB,E
Primary Accession	Q9UHA7
Reactivity	Human
Host	Rabbit
Clonality	Polyclonal
Isotype	Rabbit IgG
Calculated MW	17684
Antigen Region	35-61

IL1F6 Antibody (Center) - Additional Information**Gene ID** 27179**Other Names**

Interleukin-36 alpha, FIL1 epsilon, Interleukin-1 epsilon, IL-1 epsilon, Interleukin-1 family member 6, IL-1F6, IL36A, FIL1E, IL1E, IL1F6

Target/Specificity

This IL1F6 antibody is generated from rabbits immunized with a KLH conjugated synthetic peptide between 35-61 amino acids from the Central region of human IL1F6.

Dilution

FC~~1:10~50

IHC-P~~1:50~100

WB~~1:1000

E~~Use at an assay dependent concentration.

Format

Purified polyclonal antibody supplied in PBS with 0.09% (W/V) sodium azide. This antibody is purified through a protein A column, followed by peptide affinity purification.

Storage

Maintain refrigerated at 2-8°C for up to 2 weeks. For long term storage store at -20°C in small aliquots to prevent freeze-thaw cycles.

Precautions

IL1F6 Antibody (Center) is for research use only and not for use in diagnostic or therapeutic procedures.

IL1F6 Antibody (Center) - Protein Information**Name** IL36A ([HGNC:15562](#))

Synonyms FIL1E, IL1E, IL1F6

Function Cytokine that binds to and signals through the IL1RL2/IL-36R receptor which in turn activates NF-kappa-B and MAPK signaling pathways in target cells linked to a pro-inflammatory response. Part of the IL- 36 signaling system that is thought to be present in epithelial barriers and to take part in local inflammatory response; similar to the IL-1 system with which it shares the coreceptor IL1RAP. Seems to be involved in skin inflammatory response by acting on keratinocytes, dendritic cells and indirectly on T-cells to drive tissue infiltration, cell maturation and cell proliferation. In cultured keratinocytes induces the expression of macrophage, T-cell, and neutrophil chemokines, such as CCL3, CCL4, CCL5, CCL2, CCL17, CCL22, CL20, CCL5, CCL2, CCL17, CCL22, CXCL8, CCL20 and CXCL1, and the production of pro- inflammatory cytokines such as TNF-alpha, IL-8 and IL-6. In cultured monocytes up-regulates expression of IL-1A, IL-1B and IL-6. In myeloid dendritic cells involved in cell maturation by up-regulating surface expression of CD83, CD86 and HLA-DR. In monocyte-derived dendritic cells facilitates dendritic cell maturation and drives T-cell proliferation. May play a role in pro-inflammatory effects in the lung.

Cellular Location

Cytoplasm. Secreted. Note=The secretion is dependent on protein unfolding and facilitated by the cargo receptor TMED10; it results in protein translocation from the cytoplasm into the ERGIC (endoplasmic reticulum-Golgi intermediate compartment) followed by vesicle entry and secretion.

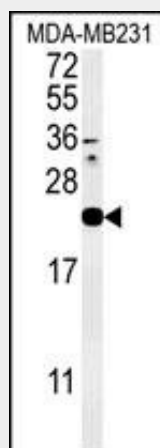
Tissue Location

Expressed in immune system and fetal brain, but not in other tissues tested or in multiple hematopoietic cell lines Predominantly expressed in skin keratinocytes but not in fibroblasts, endothelial cells or melanocytes. Increased in lesional psoriasis skin

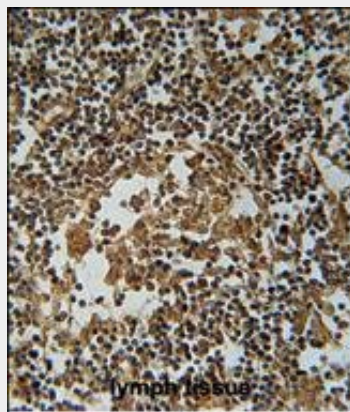
IL1F6 Antibody (Center) - Protocols

Provided below are standard protocols that you may find useful for product applications.

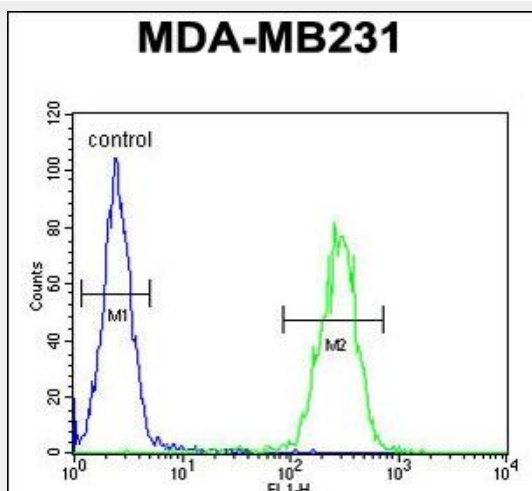
- [Western Blot](#)
- [Blocking Peptides](#)
- [Dot Blot](#)
- [Immunohistochemistry](#)
- [Immunofluorescence](#)
- [Immunoprecipitation](#)
- [Flow Cytometry](#)
- [Cell Culture](#)

IL1F6 Antibody (Center) - Images

Western blot analysis of IL1F6 Antibody (Center) (Cat. #AP5234c) in MDA-MB231 cell line lysates (35ug/lane).IL1F6 (arrow) was detected using the purified Pab.



IL1F6 Antibody (Center) (Cat. #AP5234c) immunohistochemistry analysis in formalin fixed and paraffin embedded human lymph tissue followed by peroxidase conjugation of the secondary antibody and DAB staining. This data demonstrates the use of the IL1F6 Antibody (Center) for immunohistochemistry. Clinical relevance has not been evaluated.



IL1F6 Antibody (Center) (Cat. #AP5234c) flow cytometric analysis of MDA-MB231 cells (right histogram) compared to a negative control cell (left histogram).FITC-conjugated goat-anti-rabbit secondary antibodies were used for the analysis.

IL1F6 Antibody (Center) - Background

The function of this protein has not been specifically defined.

IL1F6 Antibody (Center) - References

Kim, T.J., et al. J. Rheumatol. 35(8):1603-1608(2008)
Blumberg, H., et al. J. Exp. Med. 204(11):2603-2614(2007)
Zhan, X., et al. Anal. Biochem. 354(2):279-289(2006)