

**K0415 Antibody (Center)**  
**Affinity Purified Rabbit Polyclonal Antibody (Pab)**  
**Catalog # AP5236c****Specification**

---

**K0415 Antibody (Center) - Product Information**

Application	IHC-P,E
Primary Accession	<a href="#">O43299</a>
Other Accession	<a href="#">Q3U829</a>
Reactivity	Human
Predicted	Mouse
Host	Rabbit
Clonality	Polyclonal
Isotype	Rabbit IgG
Calculated MW	88605
Antigen Region	294-322

**K0415 Antibody (Center) - Additional Information****Gene ID** 9907**Other Names**

AP-5 complex subunit zeta-1, Adaptor-related protein complex 5 zeta subunit, Zeta5, AP5Z1, KIAA0415, SPG48

**Target/Specificity**

This K0415 antibody is generated from rabbits immunized with a KLH conjugated synthetic peptide between 294-322 amino acids from the Central region of human K0415.

**Dilution**

IHC-P~~1:50~100

E~~Use at an assay dependent concentration.

**Format**

Purified polyclonal antibody supplied in PBS with 0.09% (W/V) sodium azide. This antibody is purified through a protein A column, followed by peptide affinity purification.

**Storage**

Maintain refrigerated at 2-8°C for up to 2 weeks. For long term storage store at -20°C in small aliquots to prevent freeze-thaw cycles.

**Precautions**

K0415 Antibody (Center) is for research use only and not for use in diagnostic or therapeutic procedures.

**K0415 Antibody (Center) - Protein Information****Name** AP5Z1

**Synonyms** KIAA0415, SPG48

**Function** As part of AP-5, a probable fifth adaptor protein complex it may be involved in endosomal transport. According to PubMed:[20613862](#) it is a putative helicase required for efficient homologous recombination DNA double-strand break repair.

**Cellular Location**

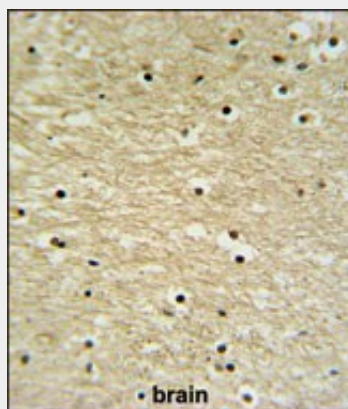
Cytoplasm. Nucleus. Note=By SDS-PAGE, 2 isoforms have been observed, the shorter seems to be predominantly nuclear and the longer is mostly cytoplasmic.

**K0415 Antibody (Center) - Protocols**

Provided below are standard protocols that you may find useful for product applications.

- [Western Blot](#)
- [Blocking Peptides](#)
- [Dot Blot](#)
- [Immunohistochemistry](#)
- [Immunofluorescence](#)
- [Immunoprecipitation](#)
- [Flow Cytometry](#)
- [Cell Culture](#)

**K0415 Antibody (Center) - Images**



K0415 Antibody (Center) (Cat. #AP5236c) IHC analysis in formalin fixed and paraffin embedded human brain tissue followed by peroxidase conjugation of the secondary antibody and DAB staining. This data demonstrates the use of the K0415 Antibody (Center) for immunohistochemistry. Clinical relevance has not been evaluated.

**K0415 Antibody (Center) - Background**

The function of this protein has not been specifically defined.

**K0415 Antibody (Center) - References**

Hillier, L.W., et al. Nature 424(6945):157-164(2003)  
Scherer, S.W., et al. Science 300(5620):767-772(2003)