

STAT5B (Phospho-Ser731) Antibody
Purified Rabbit Polyclonal Antibody (Pab)
Catalog # AP52370**Specification**

STAT5B (Phospho-Ser731) Antibody - Product Information

Application	WB, IHC
Primary Accession	P42229
Other Accession	P51692
Reactivity	Human
Host	Rabbit
Clonality	Polyclonal
Calculated MW	90647

STAT5B (Phospho-Ser731) Antibody - Additional Information**Gene ID** 6776**Other Names**

Signal transducer and activator of transcription 5A, STAT5A, STAT5

Dilution

WB~~1:1000

IHC~~1:50~100

FormatRabbit IgG in phosphate buffered saline (without Mg²⁺ and Ca²⁺), pH 7.4, 150mM NaCl, 0.09% (W/V) sodium azide and 50% glycerol.**Storage Conditions**

-20°C

STAT5B (Phospho-Ser731) Antibody - Protein Information**Name** STAT5A**Synonyms** STAT5**Function**

Carries out a dual function: signal transduction and activation of transcription. Mediates cellular responses to the cytokine KITLG/SCF and other growth factors. Mediates cellular responses to ERBB4. May mediate cellular responses to activated FGFR1, FGFR2, FGFR3 and FGFR4. Binds to the GAS element and activates PRL- induced transcription. Regulates the expression of milk proteins during lactation.

Cellular Location

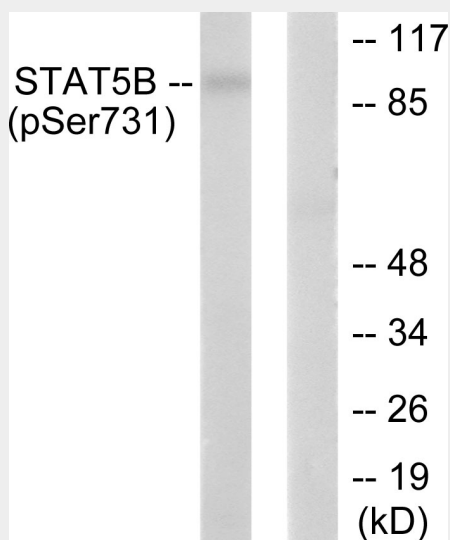
Cytoplasm. Nucleus. Note=Translocated into the nucleus in response to phosphorylation

STAT5B (Phospho-Ser731) Antibody - Protocols

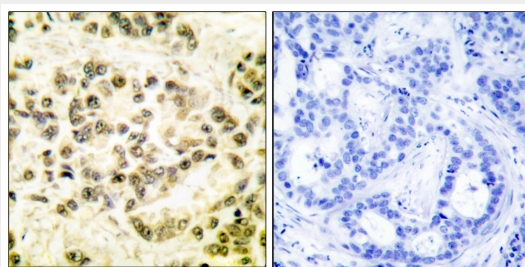
Provided below are standard protocols that you may find useful for product applications.

- [Western Blot](#)
- [Blocking Peptides](#)
- [Dot Blot](#)
- [Immunohistochemistry](#)
- [Immunofluorescence](#)
- [Immunoprecipitation](#)
- [Flow Cytometry](#)
- [Cell Culture](#)

STAT5B (Phospho-Ser731) Antibody - Images



Western blot analysis of extracts from RAW264.7 cells, treated with EGF (200ng/ml, 30mins), using STAT5B (phospho-Ser731) antibody.



Immunohistochemical analysis of paraffin-embedded human breast carcinoma tissue using STAT5B (phospho-Ser731) antibody.

STAT5B (Phospho-Ser731) Antibody - Background

Carries out a dual function: signal transduction and activation of transcription. Mediates cellular responses to the cytokine KITLG/SCF and other growth factors. Mediates cellular responses to ERBB4. May mediate cellular responses to activated FGFR1, FGFR2, FGFR3 and FGFR4. Binds to the GAS element and activates PRL-induced transcription. Regulates the expression of milk proteins during lactation.

STAT5B (Phospho-Ser731) Antibody - References

Hou J.,et al.Immunity 2:321-329(1995).
Lin J.X.,et al.Submitted (DEC-1995) to the EMBL/GenBank/DDBJ databases.
Tan D.,et al.Submitted (APR-2006) to the EMBL/GenBank/DDBJ databases.
Ota T.,et al.Nat. Genet. 36:40-45(2004).
Zody M.C.,et al.Nature 440:1045-1049(2006).