

KLHL24 Antibody (Center)
Affinity Purified Rabbit Polyclonal Antibody (Pab)
Catalog # AP5238c**Specification**

KLHL24 Antibody (Center) - Product Information

Application	WB, IHC-P,E
Primary Accession	Q6TFL4
Other Accession	Q56A24 , Q8BRG6
Reactivity	Human
Predicted	Mouse, Rat
Host	Rabbit
Clonality	Polyclonal
Isotype	Rabbit IgG
Calculated MW	68361
Antigen Region	182-211

KLHL24 Antibody (Center) - Additional Information**Gene ID** 54800**Other Names**

Kelch-like protein 24, Kainate receptor-interacting protein for GluR6, KRIP6, Protein DRE1, KLHL24, DRE1

Target/Specificity

This KLHL24 antibody is generated from rabbits immunized with a KLH conjugated synthetic peptide between 182-211 amino acids from the Central region of human KLHL24.

DilutionWB~~1:1000
IHC-P~~1:50~100**Format**

Purified polyclonal antibody supplied in PBS with 0.09% (W/V) sodium azide. This antibody is purified through a protein A column, followed by peptide affinity purification.

Storage

Maintain refrigerated at 2-8°C for up to 2 weeks. For long term storage store at -20°C in small aliquots to prevent freeze-thaw cycles.

Precautions

KLHL24 Antibody (Center) is for research use only and not for use in diagnostic or therapeutic procedures.

KLHL24 Antibody (Center) - Protein Information**Name** KLHL24

Synonyms DRE1

Function Necessary to maintain the balance between intermediate filament stability and degradation, a process that is essential for skin integrity (PubMed:[27889062](#)). As part of the BCR(KLHL24) E3 ubiquitin ligase complex, mediates ubiquitination of KRT14 and controls its levels during keratinocytes differentiation (PubMed:[27798626](#)). Specifically reduces kainate receptor-mediated currents in hippocampal neurons, most probably by modulating channel properties (By similarity). Has a crucial role in cardiac development and function (PubMed:[30715372](#)).

Cellular Location

Perikaryon. Cell projection, axon {ECO:0000250|UniProtKB:Q56A24}. Cytoplasm {ECO:0000250|UniProtKB:Q56A24, ECO:0000269|PubMed:27889062}. Cell junction, desmosome. Cell junction, adherens junction

Tissue Location

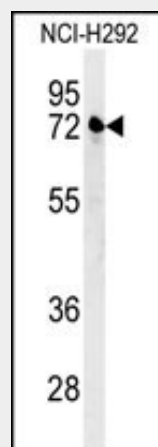
Expressed in the skin (PubMed:27889062, PubMed:27798626). Found in keratinocytes, dermal fibroblasts, and melanocytes (PubMed:27889062). Basal-layer keratinocytes have lower KLHL24 expression than suprabasal keratinocytes (PubMed:27798626) Expressed in the brain, spinal cord, liver, testis, heart and at higher levels in the skeletal muscle (PubMed:30715372)

KLHL24 Antibody (Center) - Protocols

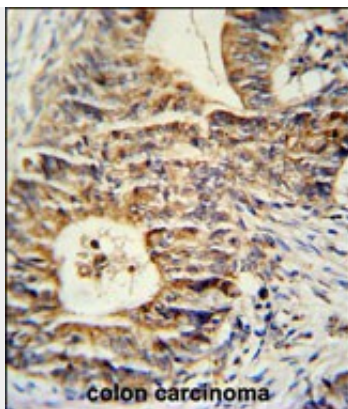
Provided below are standard protocols that you may find useful for product applications.

- [Western Blot](#)
- [Blocking Peptides](#)
- [Dot Blot](#)
- [Immunohistochemistry](#)
- [Immunofluorescence](#)
- [Immunoprecipitation](#)
- [Flow Cytometry](#)
- [Cell Culture](#)

KLHL24 Antibody (Center) - Images



KLHL24 Antibody (Center) □Cat. #AP5238c□ western blot analysis in NCI-H292 cell line lysates (35ug/lane). This demonstrates the KLHL24 antibody detected the KLHL24 protein (arrow).



KLHL24 Antibody (Center) (Cat. #AP5238c) immunohistochemistry analysis in formalin fixed and paraffin embedded human colon carcinoma followed by peroxidase conjugation of the secondary antibody and DAB staining. This data demonstrates the use of the KLHL24 Antibody (Center) for immunohistochemistry. Clinical relevance has not been evaluated.

KLHL24 Antibody (Center) - Background

KLHL24 is specifically reduces kainate receptor-mediated currents in hippocampal neurons, most probably by modulating channel properties.

KLHL24 Antibody (Center) - References

Laezza, F., et al. Neuropharmacology 55(7):1131-1139(2008)

Laezza, F., et al. Mol. Cell. Neurosci. 34(4):539-550(2007)