

**L1TD1 Antibody (C-term)**  
**Purified Rabbit Polyclonal Antibody (Pab)**  
**Catalog # AP5240b****Specification**

---

**L1TD1 Antibody (C-term) - Product Information**

Application	IHC-P, WB,E
Primary Accession	<a href="#">Q5T7N2</a>
Reactivity	Human
Host	Rabbit
Clonality	Polyclonal
Isotype	Rabbit IgG
Calculated MW	98850
Antigen Region	817-848

**L1TD1 Antibody (C-term) - Additional Information****Gene ID** 54596**Other Names**

LINE-1 type transposase domain-containing protein 1, ES cell-associated protein 11, L1TD1, ECAT11

**Target/Specificity**

This L1TD1 antibody is generated from rabbits immunized with a KLH conjugated synthetic peptide between 817-848 amino acids from the C-terminal region of human L1TD1.

**Dilution**

IHC-P~~1:50~100

WB~~1:1000

E~~Use at an assay dependent concentration.

**Format**

Purified polyclonal antibody supplied in PBS with 0.09% (W/V) sodium azide. This antibody is prepared by Saturated Ammonium Sulfate (SAS) precipitation followed by dialysis against PBS.

**Storage**

Maintain refrigerated at 2-8°C for up to 2 weeks. For long term storage store at -20°C in small aliquots to prevent freeze-thaw cycles.

**Precautions**

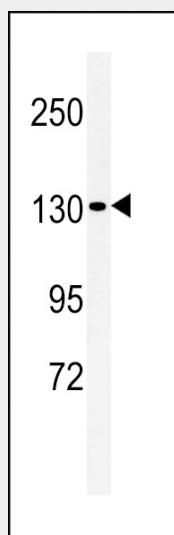
L1TD1 Antibody (C-term) is for research use only and not for use in diagnostic or therapeutic procedures.

**L1TD1 Antibody (C-term) - Protein Information****Name** L1TD1

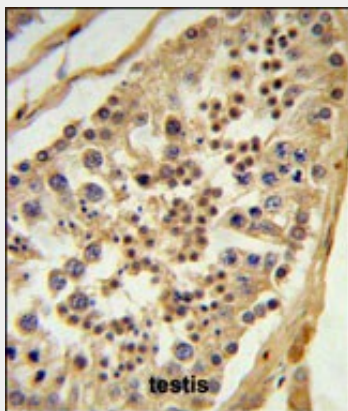
**Synonyms** ECAT11**L1TD1 Antibody (C-term) - Protocols**

Provided below are standard protocols that you may find useful for product applications.

- [Western Blot](#)
- [Blocking Peptides](#)
- [Dot Blot](#)
- [Immunohistochemistry](#)
- [Immunofluorescence](#)
- [Immunoprecipitation](#)
- [Flow Cytometry](#)
- [Cell Culture](#)

**L1TD1 Antibody (C-term) - Images**

Western blot analysis of L1TD1 Antibody (C-term) (Cat. #AP5240b) in Hela cell line lysates (35ug/lane). L1TD1 (arrow) was detected using the purified Pab.



L1TD1 Antibody (C-term)(Cat. #AP5240b) IHC analysis in formalin fixed and paraffin embedded testis tissue followed by peroxidase conjugation of the secondary antibody and DAB staining. This data demonstrates the use of the L1TD1 Antibody (C-term) for immunohistochemistry. Clinical relevance has not been evaluated.

**L1TD1 Antibody (C-term) - Background**

L1TD1 is a member of the keratin gene family. As a type I hair keratin, it is an acidic protein which heterodimerizes with type II keratins to form hair and nails. The type I hair keratins are clustered in a region of chromosome 17q12-q21 and have the same direction of transcription.

**L1TD1 Antibody (C-term) - References**

Schweizer, J., et al. J. Cell Biol. 174(2):169-174(2006)  
Rogers, M.A., et al. Differentiation 72 (9-10), 527-540 (2004)  
Buning, C., et al. Dig Liver Dis 36(6):388-391(2004)