

LHPL2 Antibody (C-term)
Affinity Purified Rabbit Polyclonal Antibody (Pab)
Catalog # AP5242b**Specification**

LHPL2 Antibody (C-term) - Product Information

Application	WB,E
Primary Accession	Q6ZUX7
Other Accession	Q8BGA2
Reactivity	Human, Hamster
Predicted	Mouse
Host	Rabbit
Clonality	Polyclonal
Isotype	Rabbit IgG
Calculated MW	24486
Antigen Region	196-223

LHPL2 Antibody (C-term) - Additional Information**Gene ID** 10184**Other Names**

Lipoma HMGIC fusion partner-like 2 protein, LHFPL2, KIAA0206

Target/Specificity

This LHPL2 antibody is generated from rabbits immunized with a KLH conjugated synthetic peptide between 196-223 amino acids from the C-terminal region of human LHPL2.

Dilution

WB~~1:1000

E~~Use at an assay dependent concentration.

Format

Purified polyclonal antibody supplied in PBS with 0.09% (W/V) sodium azide. This antibody is purified through a protein A column, followed by peptide affinity purification.

Storage

Maintain refrigerated at 2-8°C for up to 2 weeks. For long term storage store at -20°C in small aliquots to prevent freeze-thaw cycles.

Precautions

LHPL2 Antibody (C-term) is for research use only and not for use in diagnostic or therapeutic procedures.

LHPL2 Antibody (C-term) - Protein Information**Name** LHFPL2 ([HGNC:6588](#))

Synonyms KIAA0206

Function Plays a role in female and male fertility. Involved in distal reproductive tract development.

Cellular Location

Membrane; Multi-pass membrane protein

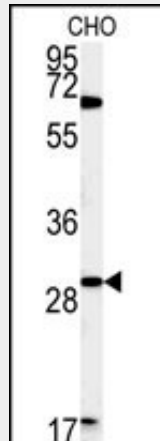
Tissue Location

Expressed in all tissues and cell lines examined except brain and peripheral blood leukocytes

LHPL2 Antibody (C-term) - Protocols

Provided below are standard protocols that you may find useful for product applications.

- [Western Blot](#)
- [Blocking Peptides](#)
- [Dot Blot](#)
- [Immunohistochemistry](#)
- [Immunofluorescence](#)
- [Immunoprecipitation](#)
- [Flow Cytometry](#)
- [Cell Culture](#)

LHPL2 Antibody (C-term) - Images

Western blot analysis of LHPL2 Antibody (C-term) (Cat. #AP5242b) in CHO cell line lysates (35ug/lane). LHPL2 (arrow) was detected using the purified Pab.

LHPL2 Antibody (C-term) - Background

LHPL2 is a member of the lipoma HMGIC fusion partner (LHFP) gene family, which is a subset of the superfamily of tetraspan transmembrane protein encoding genes.

LHPL2 Antibody (C-term) - References

Potkin, S.G., et al. PLoS ONE 4 (8), E6501 (2009) :
Longo-Guess, C.M., et al. Proc. Natl. Acad. Sci. U.S.A. 102(22):7894-7899(2005)
Petit, M.M., et al. Genomics 57(3):438-441(1999)